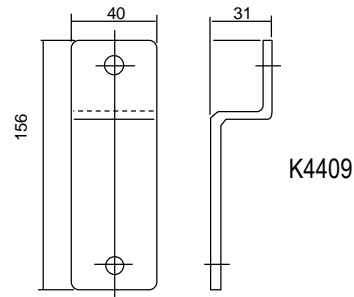
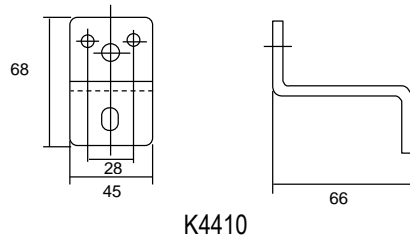
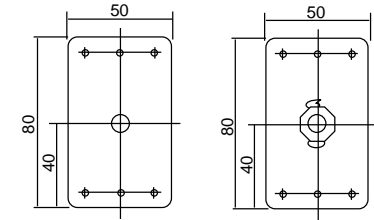
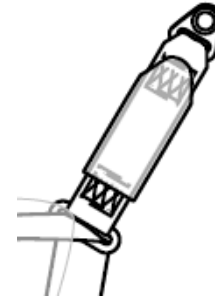
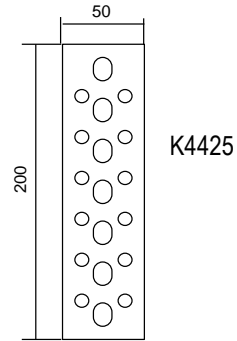
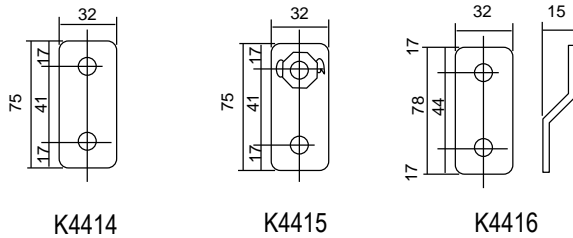


APPLICATIONS

MOUNTING

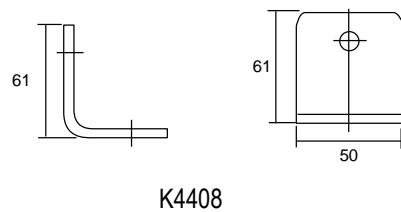
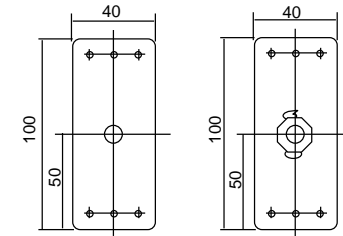
REINFORCING

KEY: MEASUREMENTS IN MM EG. 40 = 40MM

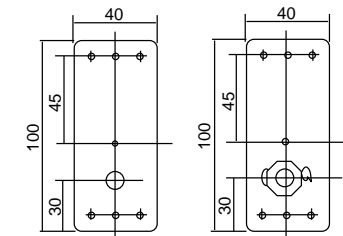


K7099 = 250MM
DROPPER KIT

K7099S = 150MM
DROPPER KIT



K1697 CHILD SEAT
ANCHOR KIT



BRACKETS

Important Note:

- Mounting brackets are to be used for installation of the retractor. All brackets will accommodate the standard 7/16 UNF bolt, along with the smaller 5/16 UNF bolts found on both the K4425 and K4410.
- Reinforcing brackets are for creating new seatbelt mounting points and can be riveted into position.