

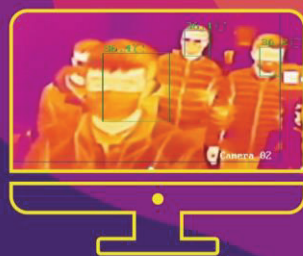
Hikvision Fever Screening Thermal Solutions

SAFER, FASTER, SMARTER

High Efficiency
One second
to detect temperature
in a person

Increased Safety
Non-contact
measurement
to avoid physical contact

Fever Screening Solutions



1 Handheld Camera + Tripod + iVMS-4200 or Hik-Thermal (Mobile app)

Accuracy: $\pm 0.5^{\circ}\text{C}$



With a Wi-Fi module, the TP21B handheld camera can connect to a PC or a smartphone to notify operators when a person with an elevated temperature passes by. It also features a built-in speaker for audio alarms.

2 Turret/Bullet Camera + Tripod/Bracket + iVMS-4200 + Laptop

Accuracy: $\pm 0.5^{\circ}\text{C}$



The turret/bullet camera features AI detection to reduce false alarms caused by other heat sources.

3 Turret/Bullet Camera + Blackbody Calibrator + Tripod/Bracket + iVMS-4200 + Laptop

Accuracy: $\pm 0.3^{\circ}\text{C}$



Compared with Solution [2], Solution [3] is enhanced with a blackbody calibrator to increase the temperature measurement accuracy from $\pm 0.5^{\circ}\text{C}$ to $\pm 0.3^{\circ}\text{C}$.

Note: Hikvision recommends installing a blackbody calibrator 1.2 meters in front of a thermal camera.

Fever-Screening Thermal Cameras

Temperature measurement range: $30\text{--}45^{\circ}\text{C}$
Working temperature: $10\text{--}35^{\circ}\text{C}$

DS-2TD2636B/P



AI Detection

Part No. 114-002



384*288 thermal resolution
15 mm thermal lens
(Recommended camera-target distance: 4.5-9 m)
6 mm optical lens

DS-2TD2617B/PA



AI Detection

Part No. 114-058



160*120 thermal resolution
3 / 6 mm thermal lens
(Recommended camera-target distance: 0.8-1.5 m / 1.5-3.0 m)
4 / 6 mm optical lens

DS-2TD1217B/PA



AI Detection

Part No. 114-055/056/057



160*120 thermal resolution
3 / 6 mm thermal lens
(Recommended camera-target distance: 0.8-1.5 m / 1.5-3.0 m)
4 / 6 mm optical lens

DS-2TP21B-6AVF/W



Wi-Fi

Part No. 114-025



160*120 thermal resolution
Max 8 MP optical resolution
6 mm thermal lens
(Recommended camera-target distance: 1.5-3.0 m)

