

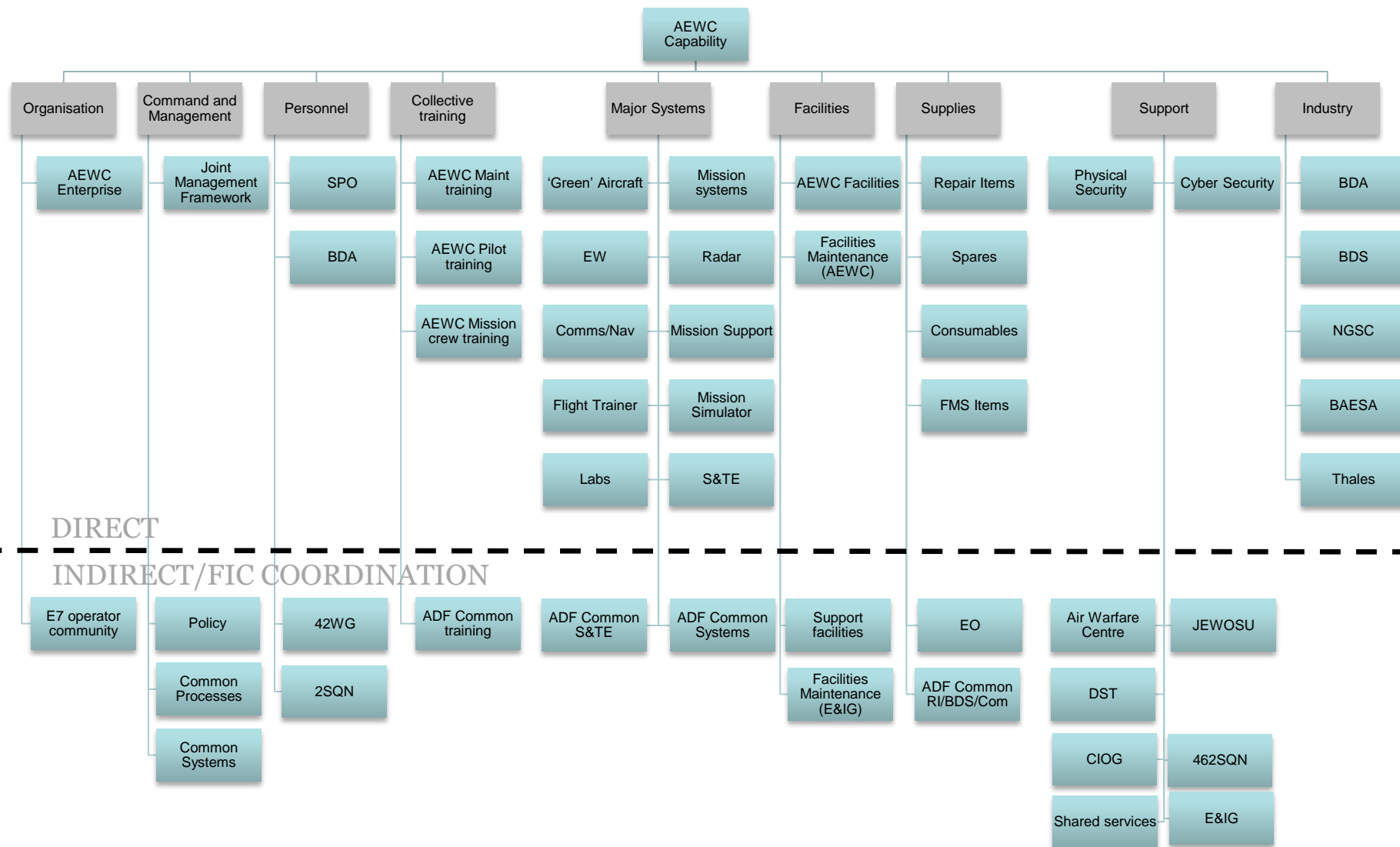


**Australian Government**  
**Department of Defence**  
Capability Acquisition and  
Sustainment Group

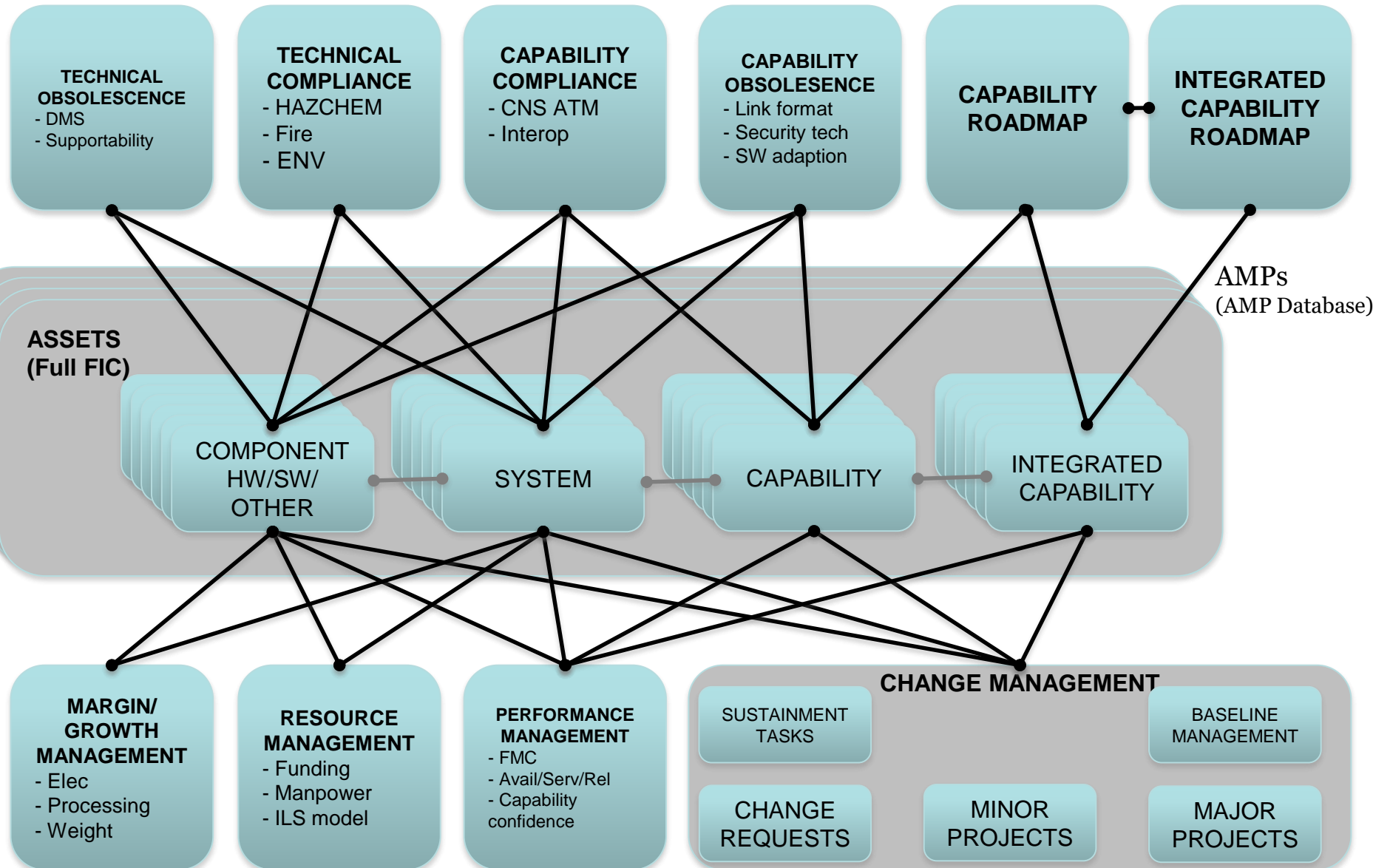
# Airborne Early Warning & Control SPO Asset Management Maturity

**WGCDR Steve Hoadley**  
CO AEWCSPO

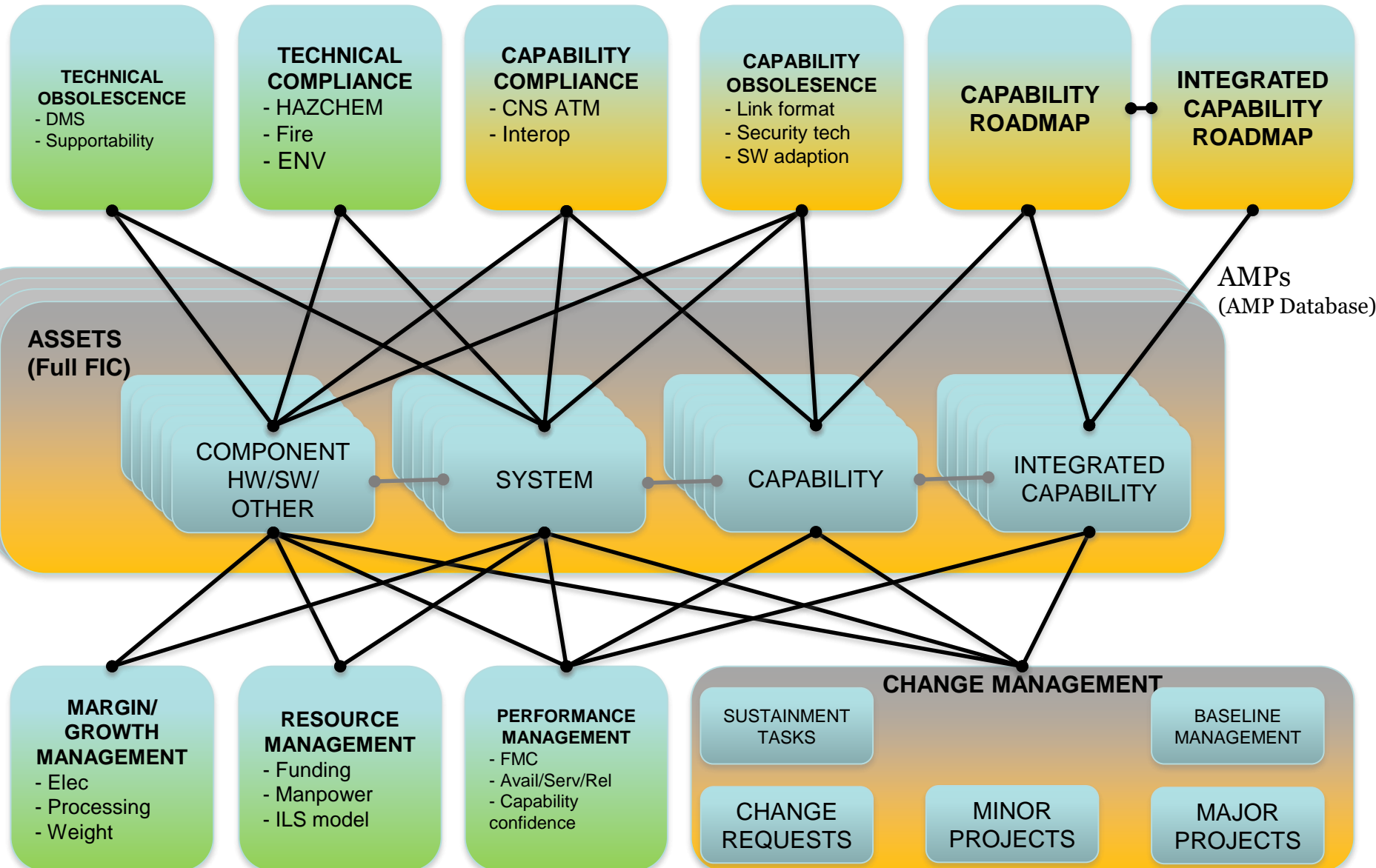


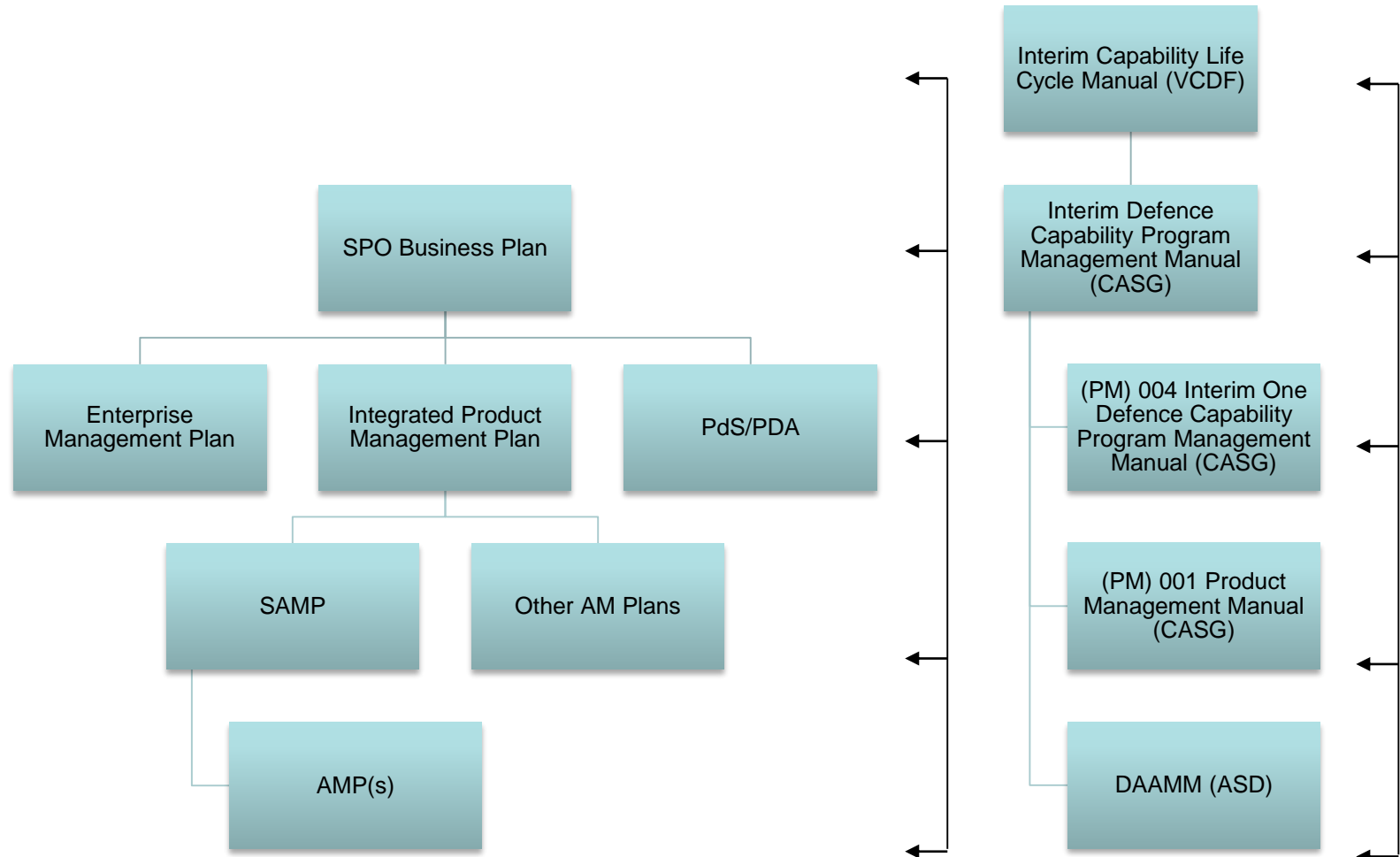


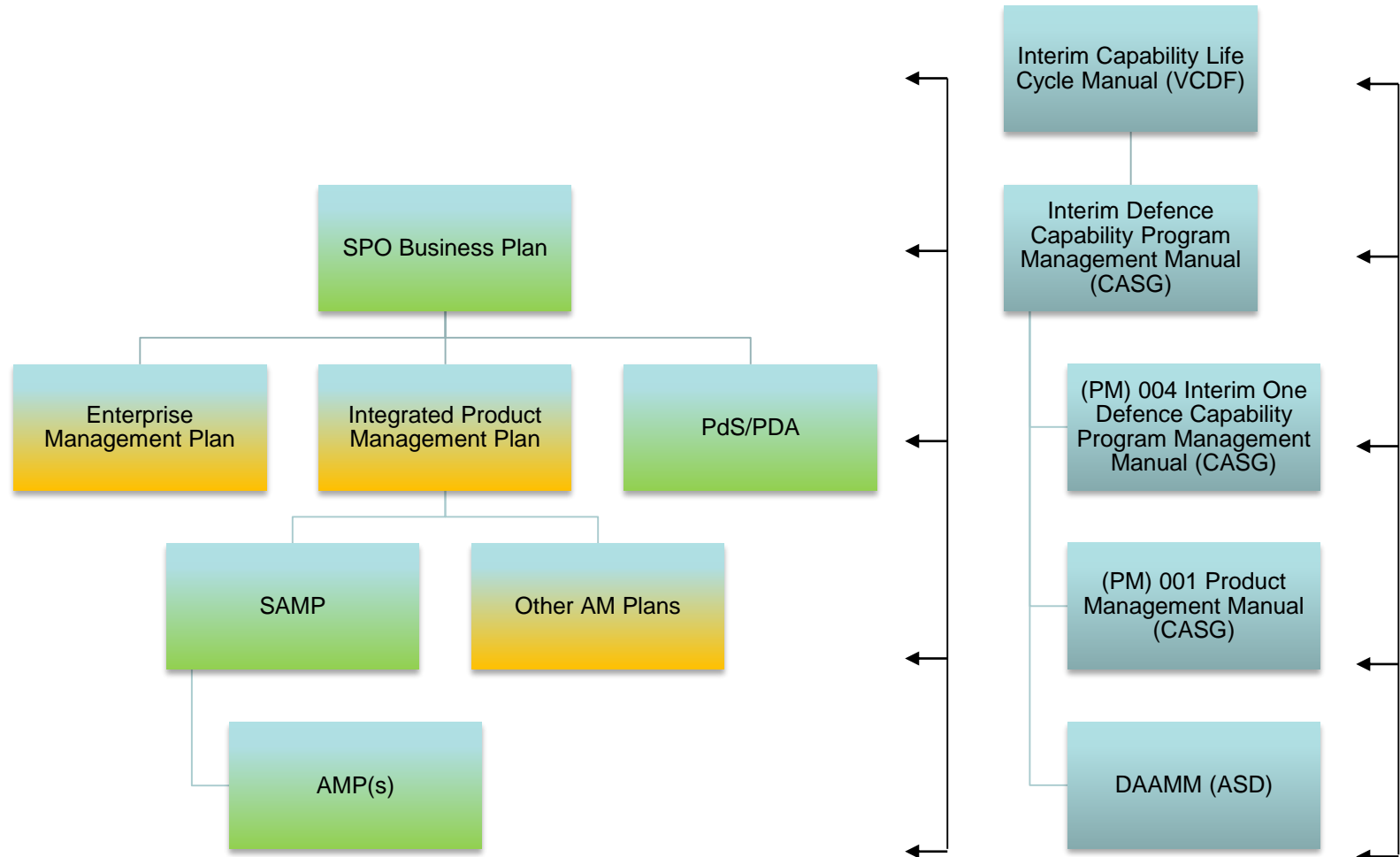
# Complexity of Asset Management - Relationship diagram



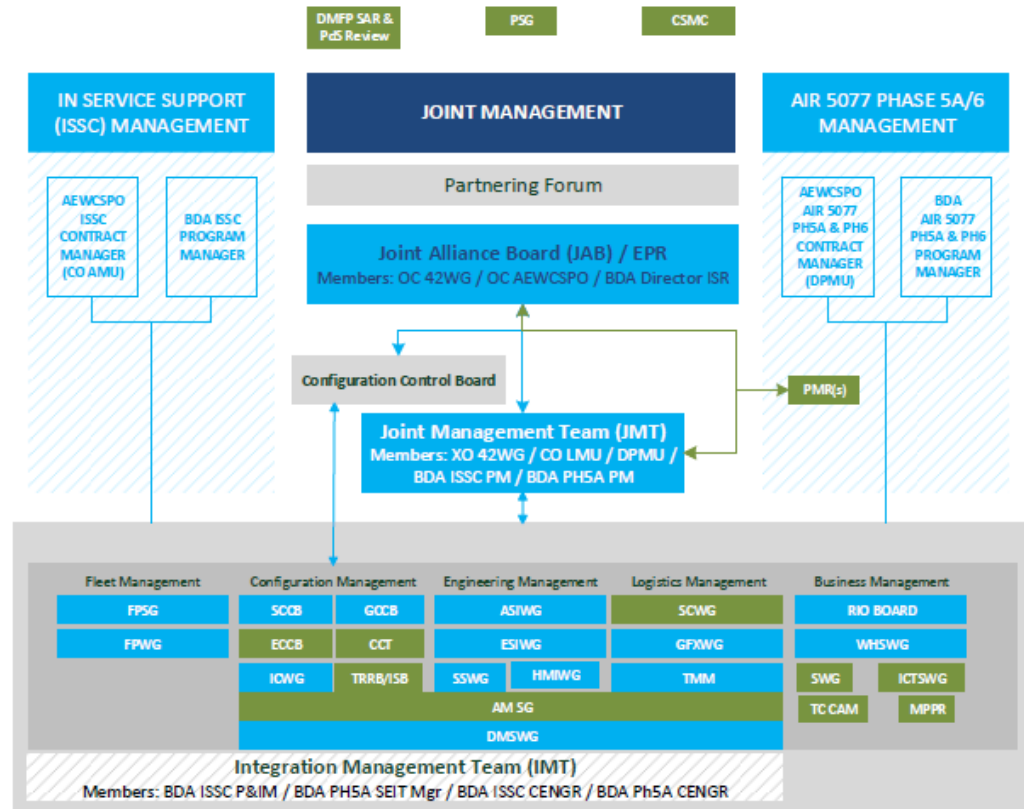
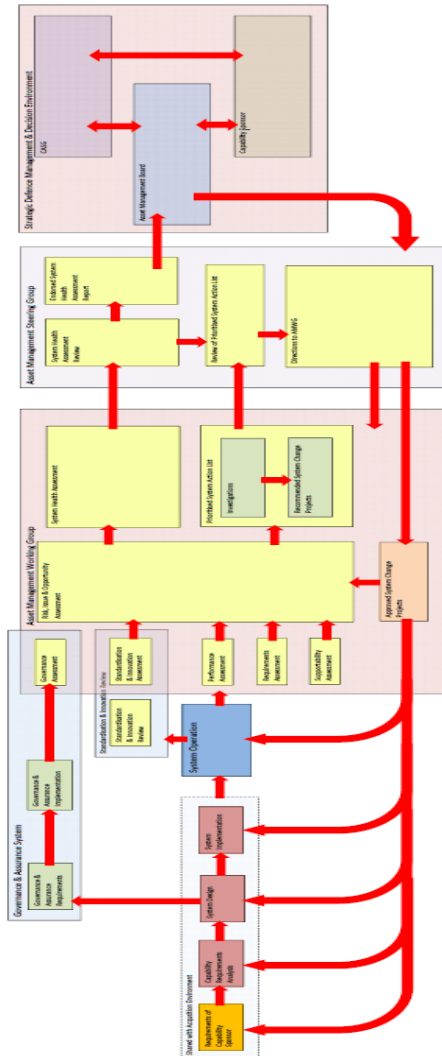
# Complexity of Asset Management - Relationship diagram





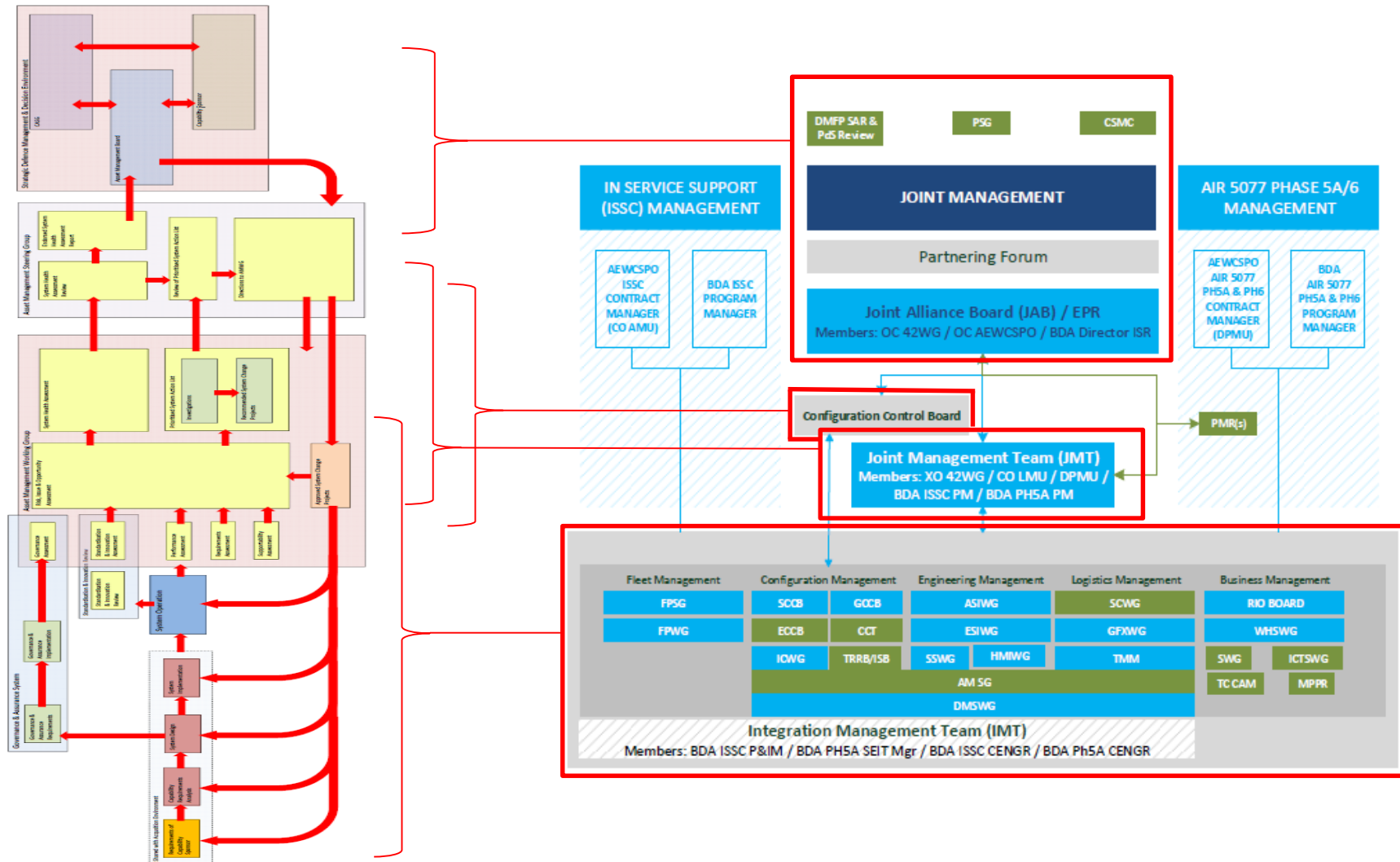


# Management Forums





# Management Forums





## Benefits

- Facilitates medium-term strategic planning, by:
  - Significantly improving the understanding of, and ability to manage supportability risk,
  - Creation of a defensible LCC model that is linked directly to cascading data sources (specific or assumptions)
  - The ability to identify interdependencies, risks and opportunities (especially between issues affecting supportability and capability)
- Brings the customer (Wing) into the supportability risk discussions
- Brings the customer into the value for money discussion and cost of ownership discussions (beyond current year)
- Improves the ability to undertake ‘what if’ scenario modelling

## Work to Go

- Software enabling tools – requirements/change management
- Evolve detail in requirements
- Evolution of key documents
- Improve structure behind non-major system Asset Management
- Continue embedding into core business



**Australian Government**

**Department of Defence**  
Capability Acquisition and  
Sustainment Group

# Questions

