



Caddy Assembly

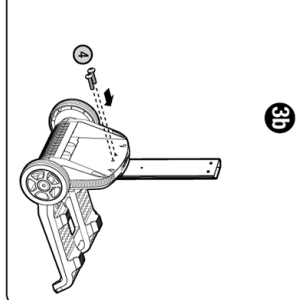
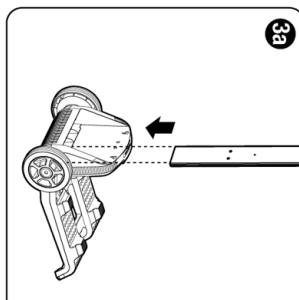
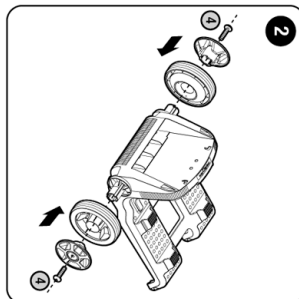
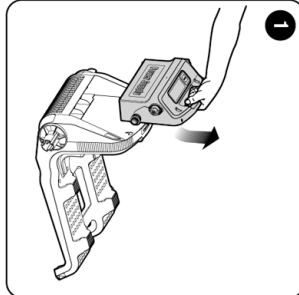
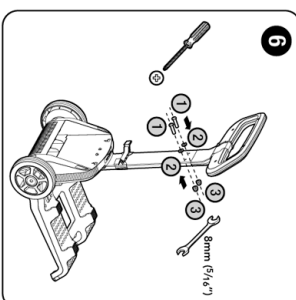
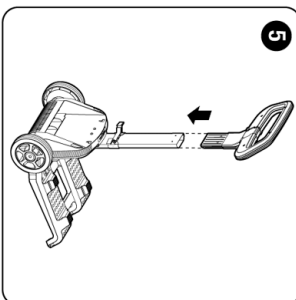
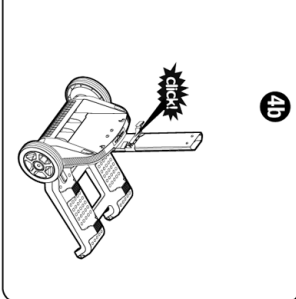
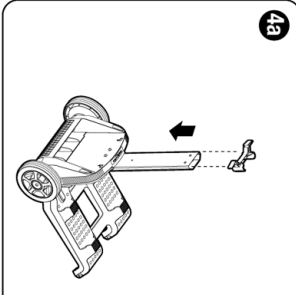
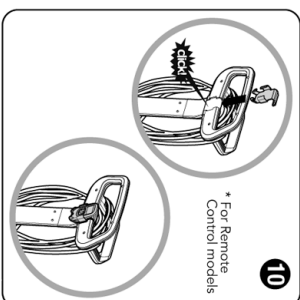
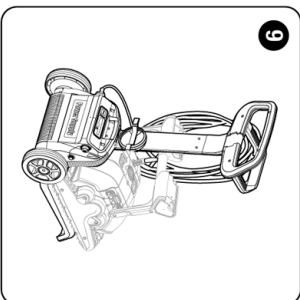
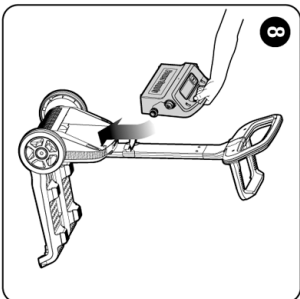
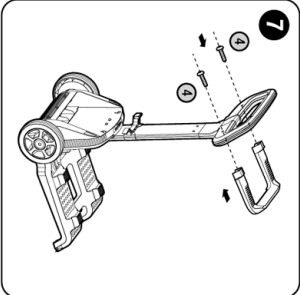
① DIN 7985 A2 M5X35

② DIN 127B A2 M5

③ DIN 1587 A2 M5

④ WN 1412 A2 KA50X16

⑤



by maytronics

Quick start guide

Dolphin M500

Thank you for purchasing a Maytronics Robotic Pool Cleaner.

The Robotic Pool Cleaners by Maytronics deliver advanced cleaning technologies, long lasting performance and easy maintenance. You and your family will be free to enjoy swimming with full confidence that your pool is completely clean.



⚠ Cautions & Warnings

- Use the originally supplied power supply only.
- Do not use an extension cable in any case whatsoever.
- Ensure the electrical outlet is protected by a ground fault interrupter (GFI) or an earth leakage interrupter.
- Keep the power supply out of standing water.
- Do not enter the pool while the Pool Cleaner is working.

- Unplug the power supply before servicing.
- Do not pull the Pool cleaner from the pool using the cable.
- Use the Pool Cleaner in the following water conditions only: Chlorine Max 4 ppm; pH 7.0 - 7.8; Temperature 6 -34°C (43-93°F); NaCl Maximum = 5000 ppm.
- Specifications:
Motor protection: IP 68
Minimum depth: 0.80m/2.6ft
Maximum depth: 5m/16.4ft

i Helpful hints

- When working, the Power Supply should be placed in the shade.
- If the Dolphin is fitted with combined or wonder brushes, gently squeeze the brushes until they are soaked with water.
- Release minimal required floating cable length to ensure proper pool coverage. Leave excess cable rolled outside the pool.

- After each cleaning cycle wash the filter bag or cartridge. Clogged filter bags reduce scanning and cleaning efficiency.
- Once a week unplug the cable from the power supply, unwind the tangled portions of the cable, straighten it out and leave it in the sun for several hours.
- Store the pool cleaner in a shady place on its Caddy, if not on a caddy, place the pool cleaner upside down.



99991088-AU

For online product warranty registration:
registration.maytronics.com

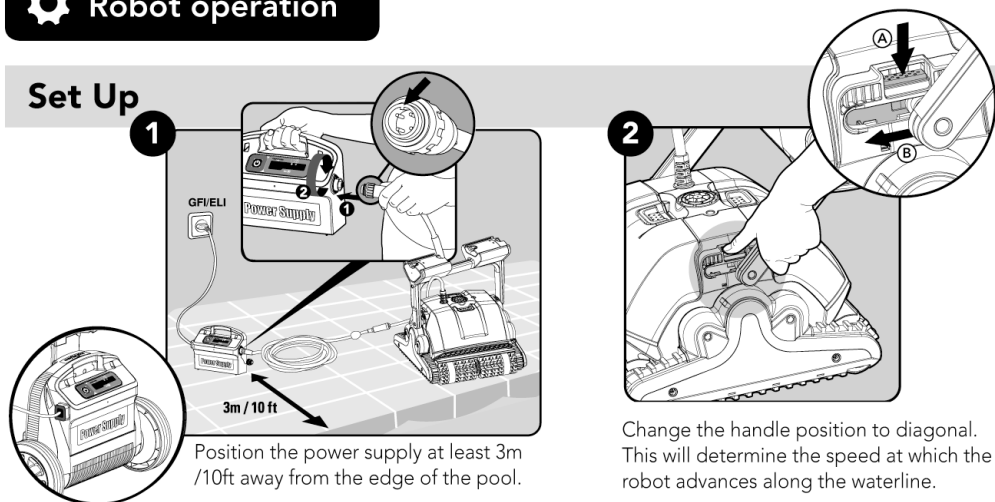


For a detailed manual (including videos):
manuals.maytronics.com/99991088-AU

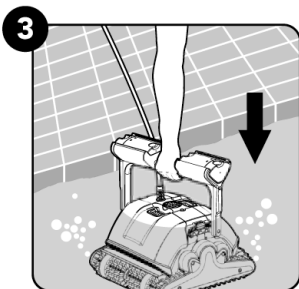


Robot operation

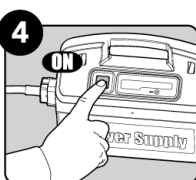
Set Up



Into the pool

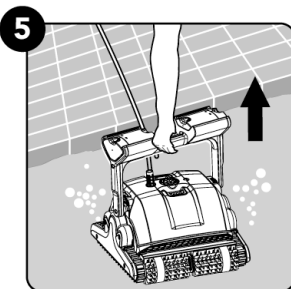


Operation

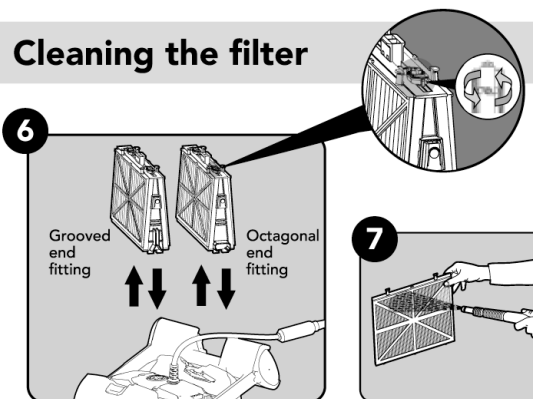


The robot will now begin working for a complete cleaning cycle. At the end of the cycle, it will automatically switch itself off.

Out of the pool

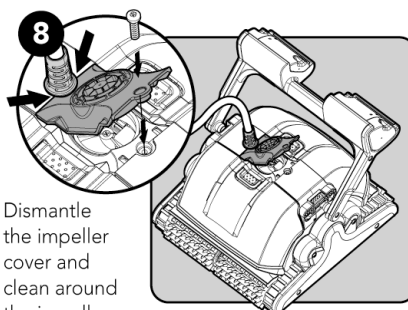


Cleaning the filter



Periodical maintenance

⚠ Unplug the power supply before servicing



Dismantle the impeller cover and clean around the impeller housing, then reassemble.

Storage

- 9 Coil the cable and store in a cool, dry place on the Caddy. Do NOT store the robot where it will be exposed to direct sunlight, excessive heat or to frost.

Digital power supply

- Input - 100-250 AC Volts
- 50-60 Hertz
- 180 Watt
- Output - <30 VDC
- IP 54

Full filter indicator

The power supply is equipped with a unique filter status indicator.

The red LED indicates 2 filter conditions:

- When blinking – The filter is partially blocked
- When lighted – The filter is blocked and must be emptied and cleaned

If the LED does not shut-off after the filter has been emptied and cleaned, press the RESET button while the robot is working.

Weekly Timer

When the power supply is switched on, the 3 LEDs will blink for 5 seconds. At this time by pressing the SELECT button you may choose a pool cleaning schedule for the coming week.

Note! – The robot will always begin to work upon set-up.

LED 1 – The robot will automatically work every day for a full cycle = 7 times a week.

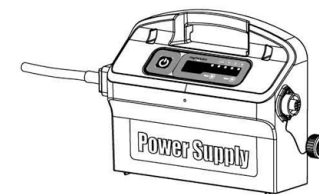
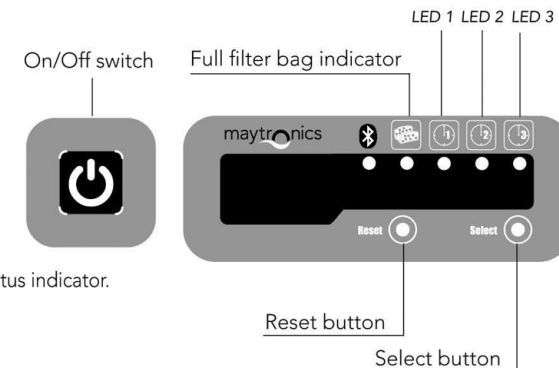
LED 2 – The robot will automatically work every other day for a full cycle = 3 times a week.

LED 3 – The robot will automatically work every 3 days = 2 times a week.

If you do not press any of the buttons in the first 5 seconds after the power supply has been switched on the robot will work for one cycle only.

While the robot is working in weekly timer mode the LED will blink constantly between cycles.

At the end of the week the power supply automatically switches off. You must reschedule the robot.



MyDolphin™ Smartphone RCU App

MyDolphin™ is an easy-to-use app for controlling your Dolphin robotic pool cleaner remotely using Bluetooth®.

Initial Operation

1. Make sure the Dolphin's power supply is connected to the Dolphin pool cleaner and an electrical outlet, and that the Dolphin robot is in the pool. Upon initial operation, it will perform the self-system diagnostic sequence.
2. Make sure Bluetooth® is active on your smartphone and download and activate the MyDolphin™ app. Once downloaded, the app searches for and displays the serial number of the nearest Dolphin robot.
3. Click on the Dolphin serial number displayed on your screen.
4. Register by entering your email address and creating a password. Your smartphone will then finalize the Bluetooth® pairing sequence.



For a detailed manual (including videos):
manuals.maytronics.com/99991088-AU

