



# St Augustine's Parish School

## NEWSLETTER No. 1– Term 1 Week 2, 2019

Address: 25 Commercial Road, Salisbury – Phone: 8182 7900 – Fax: 8182 7999  
Website: [www.saps.catholic.edu.au](http://www.saps.catholic.edu.au) Email: [info@saps.catholic.edu.au](mailto:info@saps.catholic.edu.au)



**ABSENTEE PHONE: 8182 7915 OR ABSENTEE SMS: 0407 664 190**

**WHOLE SCHOOL PRAYER** every Monday (9.10 am)

**STUDENT BANKING** every Wednesday

**PLAYGROUP** every Friday (9.00 am – 11.00 am)

**UNIFORM SHOP/BOOKROOM** every Tuesday 8.30 am – 9.00 am and

Thursday: 8.30 am – 9.00 am and 2.45 pm – 3.15 pm

**SUNSHINE CAFÉ** every Monday to Friday in Siena Hall from 8.30 am – 8.50 am.

All children welcome.

# HIGHLIGHTS

Welcome to an exciting 2019 at St Augustine's Parish School.

### Welcome

We welcome all of the new children and their families to St Augustine's Parish School. We also welcome many new staff, including Nicole Behrens (returning Year 1), Maree Conte (Year 1), Natasha Marshall (Year 1), Angela Bowman (Year 2), Kas Pillay (Health & PE), Margaret Hayman (Community Hub). We wish all of these people a very warm St Augustine's Parish School welcome and pray that their time with us will be fulfilling and blessed. We also welcome Phillis Johnston to our school Leader Leadership Team. Phillis has been appointed as Assistant Principal Religious Identity and Mission (APRIM).

### Live Learn Lead Together Conference

The year began with the coming together of 5500 teachers, school and parish leaders, priests, school administrators and Catholic Education Office staff from the Diocese of Port Pirie and the Archdiocese of Adelaide who attended the Live Learn Lead Together conference. This event was held at the Entertainment Centre where keynote speakers spoke of the importance of Catholic education and the Director outlined the vision for Catholic schools into the future. The Opening Ceremony, Prayer and Welcome to Country indicated the significance of the day and its content. We closed the school on 23 January so that everybody at St Augustine's Parish School had the opportunity to participate in this celebration.

### Congratulations

At a beautiful Mass on Saturday 2 February our very own Fr Shibu Jacob was installed as the Parish Priest of the Salisbury Catholic Parish by Fr Philip Marshall. The Church was filled with well-wishers, members of the Parish Pastoral Council and Parish Admin & Finance Council, as well as school Principals, Deputies and APRIMs from the Salisbury Parish. Fr Philip spoke about Fr Shibu's popularity and his humble service to community. We wish Fr Shibu God's richest blessings in his ministry in the Salisbury Catholic Parish.



We welcome Fr Vimalraj to the Salisbury Parish Team and we hope to see him around the school and at various masses and liturgical celebrations. We wish him a warm welcome and every blessing for his time in the Salisbury Parish.

### Meet the Teacher Night

In Week 3 we will be holding a Meet the Teacher night on Wednesday (13 February). We hope as many families as possible make the time to meet with their children's class teacher and to make that vital connection with the other people who support their children to be thriving people, capable learners and leaders for the world God desires.

### DIARY DATES

Fri 8/2	Yr 2 - 6 Beginning of Year Mass
Mon 11/2	Volunteer Induction (9.15 - 11.00am)
Tues 12/2	WHS/B&G Meeting (3.30pm)
Wed 13/2	Meet the Teacher night Rec - 2 - 6.30pm Yr 3 - 4 - 7.00pm Yr 5 - 6 - 7.30pm
	Community Hub - English Class (9.15 - 11.15am)
Mon 18/2	School Board Meeting (7.00pm)
Tues 19/2	Yr 6 Aquatics
	Playgroup (9.00am - 11.00am)
Wed 20/2	Volunteer Induction (1.45pm - 3.00pm)
	Community Hub - English Class (9.15 - 11.15am)
Fri 1/3	SAPSASA Swimming Carnival
Tues 5/3	Shrove Tuesday
	Playgroup (9.00am - 11.00am)
Wed 6/3	Ash Wednesday Year 4 - 6 Mass (9.30am)
	Community Hub - English Class (9.15 - 11.15am)
Mon 11/3	PUBLIC HOLIDAY

## 2019

This year will be the Year of 100 Languages of Childhood at St Augustine's Parish School. We are re-imagining our school with its new structure of Reception to Year 6. This somewhat changes the context of our school and we are really focusing on what is important for the children to flourish. Teachers will spend the first three weeks getting to know children and how they learn and for children to get to know each other so that they can work together in authentically collaborative teams or groups. This is a very intensive time where teachers make observational notes about the children and listen carefully to what children are sharing about learning, their spiritual life and their friendships.

### Car Parking

Anne Blake, Business Manager of Salisbury Catholic Parish, invited us to see the new landscaping and arrangements in the Church car park for keeping pedestrians safe. Anne excitedly announced that the Chapel car park will be open and operational from next Monday (11 February). Families are asked to observe that the car park is one way and access and egress are from the same gateway on Commercial Road. Pedestrian traffic can enter the Church car park via a pedestrian gate and follow the fenced off area to come around the front of the Church to access the school. This should help to relieve some of the congestion in Carey Street and the main Church car park.

Families are reminded that parking on the pedestrian lines in the Church car park is not only unsafe but against the law.

Please consider the safety of your child and everyone else's children when you use the Church car park facilities. We are very blessed to have parking at the school and we thank the Parish for their generosity in providing this for the school.

### Chinese

This week many classes are celebrating the Lunar New Year in preparation of the commencement of My Chinese Teacher (Chinese online language lessons). Children have been engaged in making Chinese symbols and decorations. They are very excited about beginning their Chinese lessons next week.

### Whole School Prayer

We invite all members of our school community to attend Whole School Prayer on Monday mornings at 9.15 am in Siena Hall. Families are reminded that there is a Beginning of School Year Mass on Friday 8 February at 9.30 am in the Church. Years 2 to 6 will attend Mass while Receptions and Year 1s will engage with songs and readings in their own rooms.

### Enrolments

We are now conducting Enrolment Interviews for the mid-year intake for 2019 and enrolments for the beginning of 2020. There are limited spaces available and so we encourage families to be prompt in contacting the wonderful women at the Front Office for Enrolment Forms.

Blessings and Peace, *Georgia Dennis, Kerri Dent & Phillis Johnston*

---

## Performing Arts 2019

Welcome back to our wonderful school community for 2019! I am looking forward to another busy and exciting year of Performing Arts with your children. To follow is an overview of Performing Arts for this year:



### ***Term 1 – Dance/Movement Focus***

All students from R-6 will learn and perform a motivational warm-up dance for the opening of Sports Day in Week 10

### ***Term 2 – Music Focus***

R-2 Elements of Music, Year 3 Recorder, Year 4-6 Percussion and introduction to Ukulele

### ***Term 3 – Drama Focus***

Story Telling, Mime, Improvisation, Characterisation

Wakakirri Performance (Selected Year 3-6 students)



### ***Term 4 – Singing Focus***

Linking in with our whole school Carols Night

Please do not hesitate to come and introduce yourself to me and ask any questions. The Performing Arts Room is now situated near the asphalt area opposite the John Paul II Building.

Paula Giugliano (Performing Arts Teacher)

# PLAYGROUP

Learning Together at Little Augustine's Supported Playgroup.

Tuesdays beginning 19 February and Fridays 9.00am -11.00am

**Imaginary Play** when children engage in dramatic play they are developing their language, literacy skills and social skills as they learn to share, communicate and take turns.

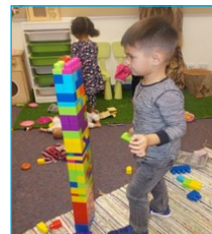


**Circle time** is part of our routine where we sit together to read stories and sing action songs. Sharing books together is a powerful way for children to develop a love of reading. Singing helps children learn language through rhythm and rhyme.



**Playdough** also provides children with opportunities to develop their language and literacy, it encourages children to be imaginative and strengthens their neural sensory pathways. Children also practice eye hand co-ordination and build hand muscle strength needed for writing

**Construction Play** provides an opportunity for children to develop their numeracy understanding of size, shapes, numbers, and spatial awareness. Construction helps support children to communicate their ideas to make sense of their world.



**Life Skills** allowing your child to help just enough so they can do it themselves builds a sense of independence. Giving them the opportunity to practise and master new skills encourages persistence and resilience. This supports children to feel capable and competent, which builds their self esteem and confidence.



## CANTEEN



### Term 1 Week 3: 11 February - 15 February

Monday	Rosie & Toni
Tuesday	Judith
Wednesday	Chris & Inger
Thursday	Alex & Estrella
Friday	Estrella - HELP URGENTLY NEEDED

### Term 1 Week 4: 18 February - 22 February

Monday	Rosie
Tuesday	Special Lunch Day
Wednesday	Chris & Inger
Thursday	Alex & Estrella
Friday	Estrella - HELP URGENTLY NEEDED

# **SCHOOL NEWSLETTER**

**Posted on school's webpage at the following link:**

<http://www.saps.catholic.edu.au/>

**OR**

**Provide your email address (see slip below) and a copy will be sent each fortnight OR**

**Request printed copy (see slip below) – new request required each year**

✂-----

*Please return to the Front Office*

My email address is: \_\_\_\_\_

**OR** I / We would like a printed copy of the Newsletter provided to:

Eldest Student's Name: .....Class: .....

Signed: .....Date:     /     /

✂-----

## **2019 VOLUNTEER INDUCTION – RETURN SLIP**

I will be attending the **Volunteer Induction** session on:

☐

**MONDAY 11 FEBRUARY at: 9.15am - 11.00am**

☐

**WEDNESDAY 20 FEBRUARY at: 1.45pm - 3.00pm**

Name: .....Contact No.: .....

## **UNIFORM**

**St Augustine's School Uniform components are only available from the St Augustine's Parish School's Uniform Shop.**

*Please ensure your child has a school hat.*

Please remember to label your child's uniform so that if it is found, it can be returned.

Also just a reminder that our Uniform Shop / Book room is open Tuesday mornings 8.30 am – 9.00 am, Thursday mornings 8.30am – 9.00am and Thursday afternoons 2.45pm – 3.15pm.

We also take orders with payment via email on [info@saps.catholic.edu.au](mailto:info@saps.catholic.edu.au) or phone on 8182 7900. Order forms are available on our website [www.saps.catholic.edu.au](http://www.saps.catholic.edu.au).

*The services and events contained in this newsletter are in no way connected with the school and are included for your information only. Parents and guardians need to make their own enquiries and assessments about the suitability of these events and services for their needs and those of their children.*

## WEBSITE LINKS –

The Southern Cross (latest issue): <http://www.thesoutherncross.org.au>

The Australian Parents Council Inc (APC) website: <http://www.austparents.edu.au/>

Mary MacKillop Centre, Adelaide: [www.marymackillopadelaide.org.au](http://www.marymackillopadelaide.org.au)

The Federation of Catholic School Parent Communities Newsletter: <http://www.parentfederation.catholic.edu.au/>

SCHOOL NEWSLETTER: <http://www.saps.catholic.edu.au> OR each year you may request a printed copy (see Front Office)

“Parenting Ideas” by Michael Grose: <https://www.parentingideas.com.au/>

## St. Augustine's School (All Girls) Auskick Centre

### *Females Only*

[Learn more about NAB AFL Auskick](#)

#### WHERE

St Augustine's Parish School  
Commercial Rd  
Salisbury, SA 5108

#### WHEN

Thursday  
3:45-4:30pm  
Duration: 45 mins  
Season: 14/02/19

#### PRICE

\$90 Auskick Registration Fee. Redeem a 2019 Sports Voucher on your child's Auskick registration & it will come at \$0 cost to you! Auskick for free!

**CONTACT; Tom Javor - 0402 699 811 - [tom.javor@sanfl.com.au](mailto:tom.javor@sanfl.com.au)**

## School F E E S

### SCHOOL FEE STATEMENTS

The 2019 School Fee statements were posted last week and should have been received by all families. If you did not receive your fee statement please contact our front office for another copy.

### SCHOOL CARD APPLICATIONS DUE 14<sup>th</sup> February

If you nominated that you were school card eligible for 2019 you would have received a school card application with your school fee statement. Please complete this form and return to the front office as soon as possible. If you did not receive a form and think you may be eligible or if your circumstances have changed significantly during the last 12 months please arrange an appointment to meet with either Kate or myself to discuss.

### SCHOOL FEE PAYMENT DATES

#### Term 1 Fees – Due by 8<sup>th</sup> March

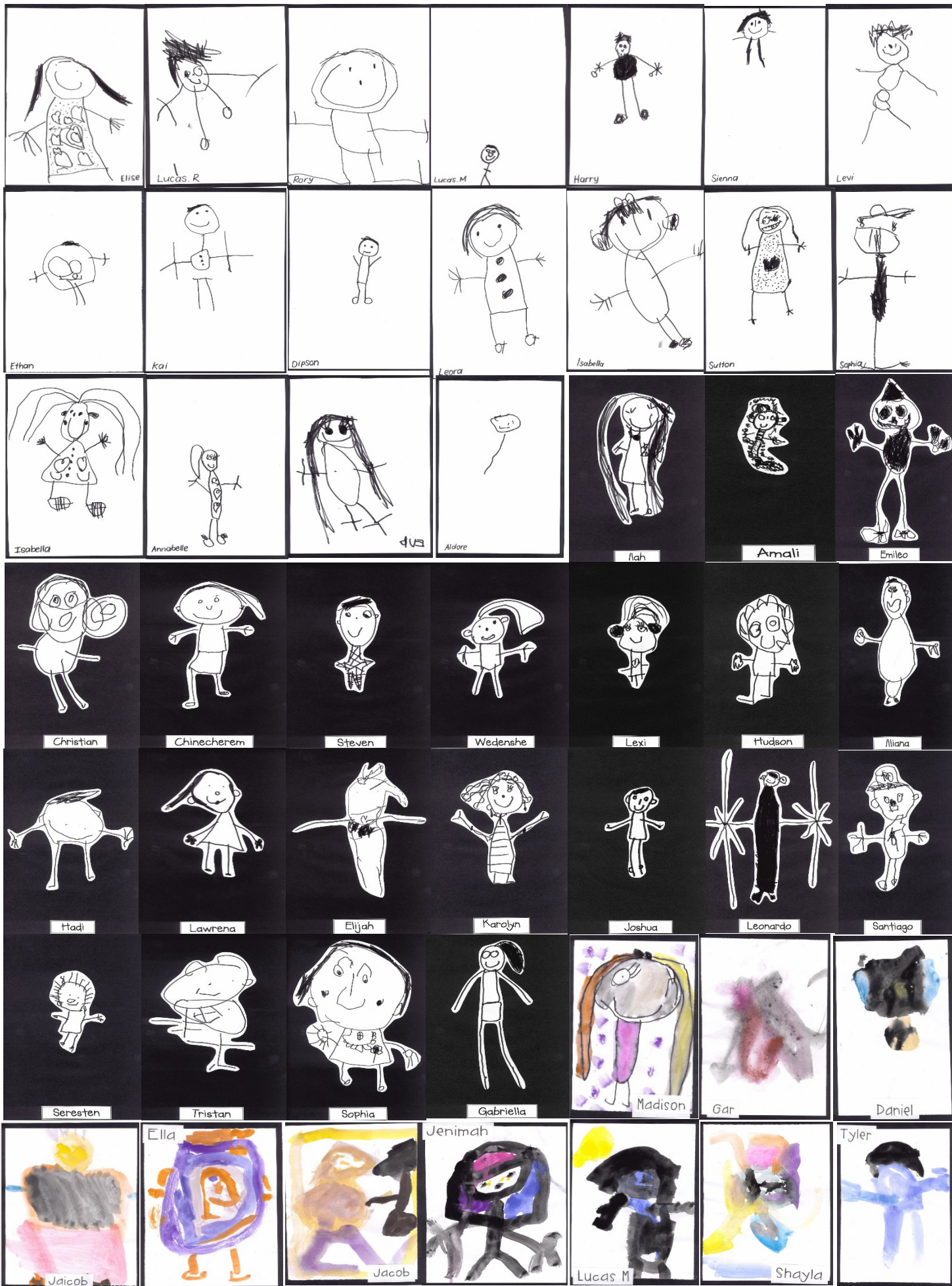
If you are paying termly 25% of your school fees are due by the 8th March. If you have a continuous direct debit or a Centrepay deduction in place, please ensure your current deductions cover your 2019 fees in full by the end of the year to ensure you are not charged a late payment fee. To increase or decrease these amounts, please contact the front office or email me at [finance@saps.catholic.edu.au](mailto:finance@saps.catholic.edu.au).

### DISCOUNT FOR FEES PAID IN FULL

Just a reminder that if you pay your fees in full by 8th March you will be entitled to a discount (as listed in the School Fee letter sent to all families in October 2018 – additional copies are available from the front office).

**Liz Polljonker – Business Manager**

# RECEPTIONS 2019







English



conversation  
class

**Practice your English in a  
friendly and relaxed group at  
St Augustines Parish School**

**Day:** Wednesdays (term time only)

**Time:** 9:15-11:15am

**Place:** St Augustine's Parish School Hub  
25 Commercial Rd, Salisbury

This is a free group for adults wanting to improve their English skills. Creche is available for children.

81827900  
margaret@saps.catholic.edu.au



St Augustine's  
Parish School  
Salisbury