

PRODUCT CATALOGUE



Ti·Max Z

SOLID TITANIUM EXCEPTIONALLY DURABLE HANDPIECE SERIES

Additional features and benefits of the Ti·Max Z Series

- The highest durability in its class (optimal gear shape and special diamond coated gears (DLC))
- The smallest head and slimmest body in its class
- Superior visibility and better access
- Amazingly quiet operation
- Excellent ergonomic shape
- DURAGRIP

Ti·Max X

SOLID TITANIUM PREMIUM HANDPIECE SERIES

Features and benefits of the Ti·Max Z and X Series

- Solid Titanium Body with Scratch Resistant DURACOAT
- Cellular Glass LED Optics
- NSK Patented Clean Head System
- No Vibration Integrated Shaft Bearings on Turbine Handpieces
- Ceramic Bearings for extra durability
- Push Button Chuck for easy bur release

S·Max M

STAINLESS STEEL PERFORMANCE HANDPIECE SERIES

- Stainless Steel Slim Body
- Cellular Glass LED Optics
- NSK Patented Clean Head System
- No Vibration Integrated Shaft Bearings on Turbine Handpieces
- Ceramic Bearings for extra durability
- Push Button Chuck for easy bur release

FXseries

STAINLESS STEEL ECONOMY PLUS HANDPIECE SERIES

- Stainless Steel Head/Body
- Integrated Handpiece
- Push Button Chuck (excludes FX57 model)

EXseries

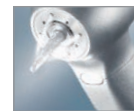
ALUMINIUM ECONOMY HANDPIECE SERIES

- Heads and Shanks sold separately
- External Water Spray
- Push Button Chuck (excludes some models)

NSK PRECISION TECHNOLOGY

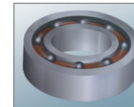
NSK Cellular Glass Optic

Cellular Glass Optic delivers brilliant illumination, is highly durable and will not deteriorate due to repeated sterilisation.



NSK Ceramic Bearings

Ceramic Bearings are 25% harder than conventional steel bearings but are only half the weight. Because frictional wear between the ball bearings and the bearing retainer is significantly reduced the efficiency and durability is significantly increased.



NSK Clean Head System

The patented NSK Clean Head System is a special mechanism designed to automatically prevent the entry of oral fluids and other contaminants into the handpiece head prolonging the life of the bearings.



NSK Push Button Chuck

Push Button Chuck is NSK's original push button auto-chuck mechanism that tensions the bur grip during rotation. It allows one-touch bur insertion and removal without tools. The bur lock mechanism is designed so that bur retention strength increases when high loads are applied to the bur.



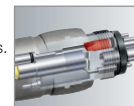
NSK Quattro Water Spray

The NSK Quattro Water Spray effectively cools the entire surface of the bur with a high cooling effect, leaving no areas untreated.



NSK Non-Retraction Valve

The Non-Retraction Valve is integrated inside the coupling, plus inside air motors. It prevents retraction of contaminated fluids into the handpiece water lines. In combination with the Clean Head System, the Non-Retraction Valve provides an effective method to effectively reduce possible internal contamination.



NSK Ergonomic Comfort Grip

NSK is dedicated to designing handpieces that adapt comfortably to the human hand form, even during extended treatment periods. This is relevant to all hand sizes. Titanium is the optimum material to especially offer lightweight comfort, tactile sensitivity, and the ideal grip texture even for gloved hands.



NSK Scratchless DURAGRIP

Special surface processed body pursuing usability and operability is designed to improve comfortability of holding while equal scratch resistancy as DURACOAT is maintained.



NSK Scratchless DURACOAT

DURACOAT, NSK's latest surface enhancement technology, takes advantage of the non allergic and biocompatible properties of titanium to further improve durability. DURACOAT creates a smooth, scratch resistant surface which is comfortable to hold.



Autoclavable

All NSK handpieces offer superior durability and continued performance, even when frequently autoclaved. All handpieces may be autoclavable up to 135°C.



Thermo-disinfector Ready

Disinfecting handpieces prior to autoclaving is a recommendable practice for more effective infection control. The symbol mark on your NSK product means you can cleanse and disinfect the handpiece using a thermo-disinfector.



LED COUPLINGS

- Stainless Steel Body
- Titanium coating
- Non-Retraction Valve
- LED incorporated in coupling



LUX Coupling



MODEL
PTL-CL-LED
OPTIC
ORDER CODE: P1001600
\$433.12
– For NSK



LUX Coupling



MODEL
PTL-CL-LEDIII
OPTIC
ORDER CODE: P1001601
\$656.04
– For NSK with water volume adjuster



LUX Coupling



MODEL
KCL-LED
OPTIC
ORDER CODE: P1005600
\$735.74
– For KaVo® MULTIflex® LUX with water volume adjuster



LUX Coupling



MODEL
SCL-LED
OPTIC
ORDER CODE: P1009600
\$735.74
– For Sirona® Quick Coupling with water volume adjuster

NSK NON-OPTIC COUPLINGS

- Stainless Steel Body
- Non-Retraction Valve



Midwest
4 hole



MODEL
FM-CL-M4
NON-OPTIC
ORDER CODE: P434051
\$273.74



Borden
2 / 3 hole



MODEL
FM-CL-B2/B3
NON-OPTIC
ORDER CODE: P432051
\$273.74

AIR TURBINES

NSK HIGH SPEED TURBINES



Ti-Max Z

Z800L
ORDER CODE: P1110
Z900L
ORDER CODE: P1111

\$1,834.14



S-Max M

M500L
ORDER CODE: P1001
M600L
ORDER CODE: P1002

\$1,278.58



Ti-Max X450

X450L
ORDER CODE: P1078

\$1,552.32



S-Max pico

PICO
ORDER CODE: P1140

\$1,278.58



Pana-Max2

PANA-MAX2 M4
ORDER CODE: P1154
PANA-MAX2 B2
ORDER CODE: P1155

\$705.71

RANK	PREMIUM	ADVANCED	SPECIAL	SPECIAL	BASIC
SOLID TITANIUM BODY	•		•		
STAINLESS STEEL BODY		•		•	•
DURAGRIP	•				
SCRATCHLESS DURACOAT			•		
CERAMIC BEARINGS	•	•	•	•	•
CELLULAR GLASS OPTICS	•	•	•	•	
CLEAN HEAD SYSTEM	•	•	•	•	•
PUSH BUTTON CHUCK	•	•	•	•	•
WATER SPRAY	QUATTRO	QUATTRO	TRIPLE	SINGLE	SINGLE
MICROFILTER	•	•	•	•	•
ERGO GRIP	•	•	•	•	•
LED ILLUMINATION	•	•	•	•	
OTHER HANDPIECES	HANDPIECES ALSO AVAILABLE TO CONNECT TO KAVO, W&H, SIRONA, BIEN AIR COUPLINGS				
	\$1,919.61	\$1,472.63	\$1,717.49	\$1,472.63	

LED : Indicates with LED illumination

Non-Optic: Indicates without optic illumination

Optic: Indicates with optic illumination

CONTRA-ANGLES



MODEL
TI-MAX
Z95L

TI-MAX Z95L

OPTIC
ORDER CODE: C1034

\$1,963.50

- 1:5 Increasing
- Quattro spray
 - For FG burs (ø1.6)
 - Max speed: 200,000 min⁻¹
 - Head size: 13.4mm
 - DLC coating
 - Anti-Heat System
 - Ceramic Bearings



MODEL
OPTIC
Z45L

LED RED BAND
CONTRA-ANGLE HANDPIECE

TI-MAX Z45L

OPTIC
ORDER CODE: C1064

1:4.2 Increasing

- Max Speed: 168,000 min⁻¹
- For FG burs (ø1.6)

\$2,095.17

Two-Way Spray Function
The world's first two-way spray function allows you to instantly choose a mist or jet spray depending on the conditions and procedure with an enclosed dedicated tool. The water jet spray prevents subcutaneous emphysema in surgical procedures, and the mist spray effectively cools the bur while cutting.



MODEL
TI-MAX
Z10L

TI-MAX Z10L

OPTIC
ORDER CODE: C1040

\$2,165.63

- 16:1 Reduction
- Single spray
 - For CA burs (ø2.35)
 - Max speed: 2,500 min⁻¹



MODEL
TI-MAX
Z85L

TI-MAX Z85L

OPTIC
ORDER CODE: C1062

\$1,963.50

- 1:5 Increasing
- Miniature head
 - Single spray
 - For FG burs (ø1.6)
 - Max speed: 200,000 min⁻¹
 - Head size: 11.8mm



MODEL
TI-MAX
Z25L

TI-MAX Z25L

OPTIC
ORDER CODE: C1038

\$1,380.23

- 1:1 Direct drive
- Single spray
 - For CA burs (ø2.35)
 - Max speed: 40,000 min⁻¹



MODEL
TI-MAX
Z15L

TI-MAX Z15L

OPTIC
ORDER CODE: C1039

\$1,961.19

- 4:1 Reduction
- Single spray
 - For CA burs (ø2.35)
 - Max speed: 10,000 min⁻¹



MODEL
TI-MAX
Z84L

TI-MAX Z84L

OPTIC
ORDER CODE: C1135

\$1,963.50

- 1:4.5 Increasing
- Exceptional Durability
 - Quattro Spray
 - Miniature Head
 - For FG burs (ø1.6)
 - Ceramic Bearings
 - DLC Coating
 - Anti Heat System
 - Max Speed: 180,000 min⁻¹



MODEL
TI-MAX
Z24L

TI-MAX Z24L

OPTIC
ORDER CODE: C1126001

\$1,380.23

- 1:1 Direct drive
- Single spray
 - For CA burs (ø2.35)
 - Miniature Head
 - Max speed: 40,000 min⁻¹



MODEL
S-MAX
M95L

S-MAX M95L

OPTIC
ORDER CODE: C1023

\$1,632.02

S-MAX M95
NON-OPTIC
ORDER CODE: C1026

\$1,300.53

- 1:5 Increasing
- Quattro water spray
 - For FG burs (ø1.6)
 - Ceramic bearings
 - Max speed: 200,000 min⁻¹
 - Head size: 13.8mm

Prices are Australian recommended retail including GST and subject to change without notice. While stocks last.



MODEL
S-MAX
M65

S-MAX M65
NON-OPTIC
ORDER CODE: H1008
\$756.53

- 1:1 Direct drive
- Single water spray
 - For HP burs (ø2.35)
 - For CA burs (ø2.35)
 - Max speed: 40,000 min⁻¹



MODEL
TI-MAX
X65L

TI-MAX X65L
OPTIC
ORDER CODE: H273
\$1,809.89

TI-MAX X65
NON-OPTIC
ORDER CODE: H274
\$870.87

- 1:1 Direct drive
- Clean Head System
 - Single spray
 - For HP burs (ø2.35)
 - For CA burs (ø2.35)
 - Max speed: 40,000 min⁻¹



MODEL
TI-MAX
X55L

TI-MAX X55L
OPTIC
ORDER CODE: C608
\$2,320.39

TI-MAX X55
NON-OPTIC
ORDER CODE: C618
\$1,961.19

- 16:1 Reduction
- Special Dust Proof
 - For Screw-in Cups and Brushes
 - 360° Rotation
 - Without Spray
 - Max Speed: 2,500 min⁻¹



MODEL
FX25M

FX25M
ORDER CODE: C1052001
\$427.35

- 1:1 Direct drive
- For CA burs (ø2.35)
 - Push button chuck
 - Ball bearing
 - Max speed: 40,000 min⁻¹
 - Clean Head System



MODEL
S-MAX
M25L

S-MAX M25L
OPTIC
ORDER CODE: C1024
\$1,252.02

S-MAX M25
NON-OPTIC
ORDER CODE: C1027
\$877.80

- 1:1 Direct Drive
- Single Water spray
 - For CA burs (ø2.35)
 - Max speed: 40,000 min⁻¹



MODEL
TI-MAX
X12L

X12L
OPTIC
ORDER CODE: C606
\$2,204.89

X12
NON-OPTIC
ORDER CODE: C616
\$1,499.19

- 1:1 Direct Drive
- For HP burs (ø2.35)
 - Stainless Steel body
 - Clean Head System
 - Max speed: 40,000 min⁻¹



MODEL
FX65M

FX65M
ORDER CODE: H1014001
\$426.19

- 1:1 Direct Drive
- For HP burs (ø2.35)
 - Stainless Steel body
 - Clean Head System
 - Max speed: 40,000 min⁻¹



MODEL
FX22

FX22
ORDER CODE: C1129091
\$257.56

- 1:1 Direct drive
- For CA burs (ø2.35)
 - Push button chuck
 - Ball bearing
 - Latch Type
 - Max speed: 30,000 min⁻¹



MODEL
S-MAX
M15L

S-MAX M15L
OPTIC
ORDER CODE: C1025
\$1,524.60

S-MAX M15
NON-OPTIC
ORDER CODE: C1028
\$1,234.70

- 4:1 Reduction
- Single Water Spray
 - For CA burs (ø2.35)
 - Max Speed: 10,000 min⁻¹



MODEL
TI-MAX
X57L

TI-MAX X57L
OPTIC
ORDER CODE: C609
\$1,481.87

TI-MAX X57
NON-OPTIC
ORDER CODE: C619
\$807.35

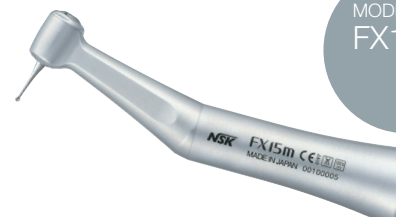
- 16:1 Reduction
- Special Dust Proof
 - For Screw-in Cups and Brushes
 - 360° Rotation
 - Without Spray
 - Max Speed: 2,500 min⁻¹



MODEL
FX57M

FX57M
ORDER CODE: C1054001
\$470.09

- 4:1 Reduction
- For screw-in cups and brushes
 - 360° Rotation
 - Paste Defense System
 - w/o Spray
 - Max Speed: 5,000 min⁻¹



MODEL
FX15M

FX15M
ORDER CODE: C1053001
\$628.32

- 4:1 Reduction
- Latch type prophyl cups
 - For CA burs (ø2.35)
 - Push Button Chuck
 - Ball Bearing
 - Max Speed: 10,000 min⁻¹



**PHATELUS
PROBE**
ORDER CODE: P411
\$698.78

Trans illumination instrument with brilliant LED output when connected to the NSK LED coupling. Powerful transilluminator for cracks and caries detection.



**ISO E-LUX
PROBE**
ORDER CODE: Z1265
\$688.38

Intense direct illumination for diagnosis of cracks in teeth plus occlusal and interproximal caries not visible to the naked eye.



MODEL NAC-Y
ORDER CODE: C032
– For CA burs (ø2.35)
– Latch type
– Max Speed: 30,000 min⁻¹
\$116.66



MODEL FPB-Y
ORDER CODE: C875
– For CA burs (ø2.35)
– Clean Head System
– Push Button Chuck
– Ball Bearing
– Max Speed: 40,000 min⁻¹
\$262.19

MODEL
P200



MODEL ER10M
ORDER CODE: C635002
10:1 Reduction
\$482.79



MODEL ER4M
ORDER CODE: C634002
4:1 Reduction
\$366.14



MODEL EC-30M
ORDER CODE: C100007
1:1 Direct Drive
\$165.17

MODEL AR-Y(S)
ORDER CODE: C187
– For screw-in cups and brushes
– Max Speed: 5,000 min⁻¹
\$103.95



MODEL AR-Y(K)
ORDER CODE: C188
– For snap-on cups
– Max Speed: 5,000 min⁻¹
\$103.95

MODEL
ER10M

MODEL
ER4M

MODEL
EC-30M

MODEL
AR-Y
AR-Y

CLINICAL MICROMOTORS



MULTI PAD

The NSK Multi Pad uniquely enables control of the NLX nano and NLX plus electric Micro Motors and also the Varios 170 ultrasonic scaler – all in one system.

When partnered with Multi Pad, the NLX plus reaches speeds of 100 – 40,000 min⁻¹ and delivers up to 4 Ncm torque, whilst offering three user-friendly endo modes; auto-reverse on, auto-stop and auto-reverse off.

NSK's Multi Pad can also be used to control all functions of the Varios 170 ultrasonic scaler. The Multi Pad auto selects the motor or scaler in use. At the touch of a button control speed, torque and gear ratios to suit specific clinical procedure. The Multi Pad can store up to eight individual programs (motor only). NSK Multi Pad is designed to integrate into most brands of new or older dental units.

ORDER CODE: Y1001846
\$627.16

MINI ELECTRIC MICRO MOTORS



NLX NANO LED ILLUMINATION

INTEGRATED SYSTEM WITH MULTIPAD CONTROL

MODEL: NLX NANO STD/MULTIPAD
ORDER CODE: NLXNANOINTEGRATEDPAD

FEATURES:

- Speed: 2,000–40,000 min⁻¹
- Torque to 3.4 Ncm
- LED illumination

*Installation not included

\$4,383.23

NANO INTEGRATED SYSTEM



NLX PLUS WITH ENDO FUNCTION

LED ILLUMINATION INTEGRATED SYSTEM WITH MULTIPAD CONTROL

MODEL: NLX PLUS/MULTIPAD
ORDER CODE: NLXPLUSINTEGRATEDPAD

FEATURES:

- Auto-reverse functionality for endodontic procedures.
- Speed: 100–40,000 min⁻¹
- Torque to 4 Ncm
- LED illumination

*Installation not included

\$4,614.23



NANO PORTABLE SYSTEM

NLX NANO LED ILLUMINATION

MODEL: NLX NANO S230 (230V)
ORDER CODE: Y1001362

FEATURES:

- Speed: 2,000–40,000 min⁻¹
- Torque to 3.4 Ncm
- LED illumination

INCLUDES:

- NLX nano control unit
- NLX nano motor and chord
- AC adaptor (230V)

\$5,139.75

MINI AIR MICRO MOTORS



TI-MAX X205L

OPTIC LED AIR MOTOR INTERNAL WATER SPRAY

Simple connection to your existing hose. The TI-Max X205L delivers powerful, smooth and quiet rotation, with loads of torque at all variable speeds. Connect to all brands of E-type optic and non-optic contra-angle handpieces.

ORDER CODE: M1013

1:1 Direct Drive

- 360° Swivel with LED illumination
- 32,000 LUX
- Titanium body with scratch-resistant DURACOAT
- Non-Retraction Valve
- Max. 25,000 min⁻¹

\$1,820.28



S-MAX M205

NON-OPTIC AIR MOTOR INTERNAL WATER SPRAY

Enhanced balance – Powerful torque. The S-Max M205 presents an economical micromotor that connects direct to your existing hose. All brands of E-type non-optic handpieces readily connect for optimum performance.

ORDER CODE: M1007001

1:1 Direct Drive

- Stainless Steel Body
- Internal Water Spray
- Non retraction valve
- Max. 25,000 min⁻¹

\$1,123.82



FX205M M4

NON-OPTIC AIR MOTOR EXTERNAL WATER SPRAY

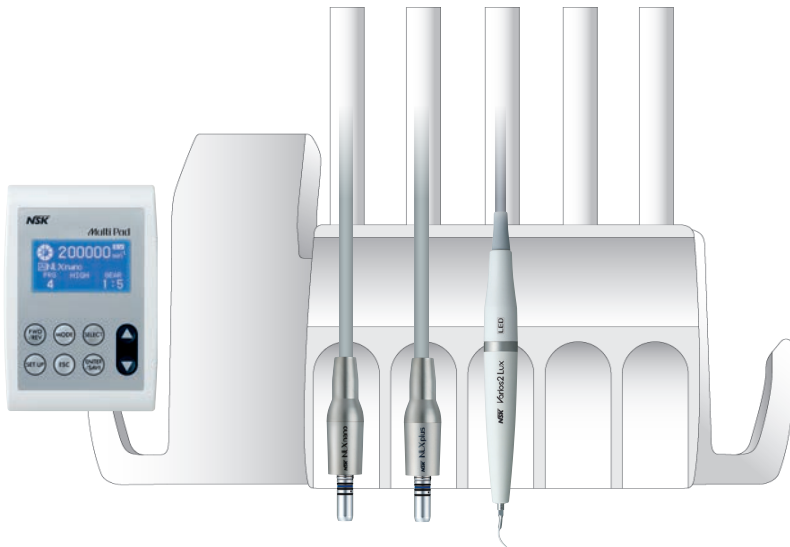
Enhanced balance – Powerful torque. The FX205 M4 presents an economical micromotor that connects direct to your existing hose. All brands of E-type non-optic handpieces readily connect for optimum performance.

ORDER CODE: M1005001

1:1 Direct Drive

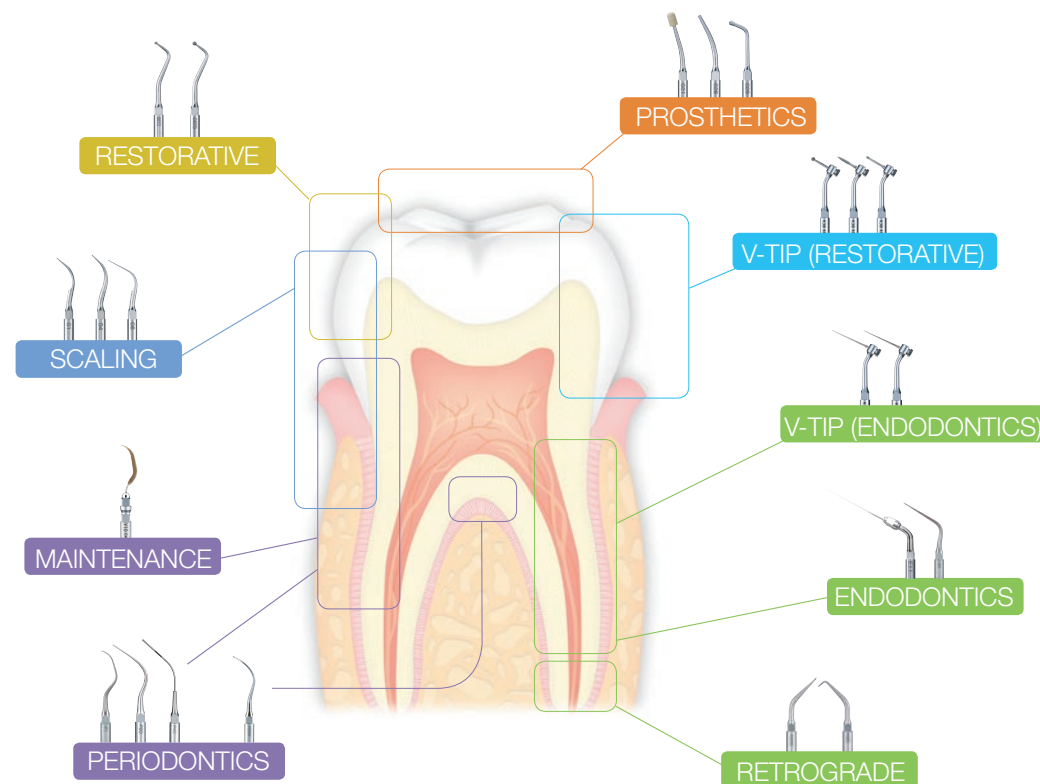
- External Water Spray
- Max. 25,000 min⁻¹
- Stainless Steel

\$981.75



NSK OFFERS A WIDE CHOICE OF VARIOUS ULTRASONIC SCALER TIPS FOR A VARIETY OF CLINICAL APPLICATIONS

Please contact NSK Oceania or your NSK Dealer to request the NSK Tips Book which lists in detail all NSK Varios Tips and applications.



TI MAX S970L – AIR SCALER

LED ILLUMINATION

INTEGRATED MULTI FUNCTION ULTRASONIC SCALER

NSK S970L Air Scaler delivers a stable, wide power range with easy swivel power adjustment. Offering an extensive tip range for a variety of applications from general scaling to root canal irrigation, even to minimally invasive procedures. Coupling direct the NSK LED coupling S(&)L will provide daylight like illumination direct to the site. Titanium body and sleek seamless design make S970L comfortable to grip, even throughout extended procedures.

Attaches direct to NSK LED coupling and includes 3 tips (S1, S2, S3)

OPTIC
ORDER CODE: T1005

\$2,129.82

NON-OPTIC
ORDER CODE: T1020

\$1,689.77



AS 2000 – AIR SCALER

- Frequency of oscillation: 5,600~5,850 Hz
- Includes 3 tips (S1, S2 & S3), Tip Wrench (CR-20) and Tip Cover (L)

NON-OPTIC
MODEL: AS2000 M4
ORDER CODE: T698

- For Midwest 4 hole
- Weight: 67g

\$764.61

NON-OPTIC
MODEL: AS2000 B2/B3
ORDER CODE: T697

- For Borden 2/3 hole
- Weight: 64g

\$764.61



HANDPIECES ALSO AVAILABLE TO CONNECT TO KAVO, SIRONA COUPLINGS

Prices are Australian recommended retail including GST and subject to change without notice. While stocks last.

VARIOS 970

LED ILLUMINATION

- Portable Multi Function
- Ultrasonic Scaler for
- Optimum clinical versatility

CONTENTS: Control Unit, Handpiece and cord, 3 Scaling Tips (G4, G6, G8) Foot Control, 2 x Irrigation bottles, 3 x Tip Wrench with torque limiter, AC Power Cord, Sterilisation Case

VARIOS 970 OPTIC
COMPLETE SET
MODEL: VA970LED
ORDER CODE: Y1001168

\$4,190.34

NON-OPTIC
ORDER CODE: Y1001175

\$3,465.00



VARIOS 570

LED ILLUMINATION

- Benchtop Multi Function
- Ultrasonic Scaler
- Varios 570 Optic
- Complete Set

CONTENTS: Control unit with handpiece cord, AC power adaptor, Handpiece, Water Filter Set, Water Supply Connector, Foot Control, 3 Scaling Tips (G4, G6, G8), Tip Wrench with torque limiter.

MODEL: VA570LUX(230V)
ORDER CODE: Y1001746

\$3,043.43

NON-OPTIC
ORDER CODE: Y1001756

\$2,587.20



VARIOS 370

LED ILLUMINATION

- Benchtop Multi Function
- Ultrasonic Scaler

CONTENTS: Control unit with handpiece cord, Control Unit holder, AC Adaptor, Handpiece, Handpiece holder, Water filter set, Foot Control, (FC-71), 3 scaling tips (G4, G6, G8), Tip wrench with torque limiter

VARIOS 370 OPTIC
COMPLETE SET
MODEL: VA370LUX(270V)
ORDER CODE: Y1001388

\$2,535.23

NON-OPTIC
ORDER CODE: Y1001391

\$1,842.23



VARIOS 170

LED ILLUMINATION

- Integrated Multi Function Ultrasonic Scaler.
- The smallest module for easy integration into new and existing dental equipment

CONTENTS: Built in module, Handpiece, Handpiece cord, 3 scaling tips (G4, G6, G8) 3 x Tip replacement wrench with torque limiter, Sterilisation case

VARIOS 170 OPTIC COMPLETE SET
MODEL: VA170LUXS1
ORDER CODE: Y1001351

*Installation not included

\$2,090.55

NON-OPTIC
ORDER CODE: Y1001352

\$1,484.18



PROPHY-MATE NEO

AIR POLISHING SYSTEM

APPLICATIONS:

- Removal of plaque and discolouration
- Preparation for pit and fissure sealant
- Etching of enamel, dentine and porcelain prior to bonding
- Preparation for pit and fissure sealant

ADVANTAGES:

- Simple to operate
- Easy maintenance
- Sturdy and reliable
- Quick connect to major brands of turbine couplings
- Comes with 60° or 80° nozzles

FOR NSK COUPLING
MODEL PMNG-PTL-P
ORDER CODE: Y135029

\$1,569.75

AVAILABLE TO FIT KAVO®,
SIRONA®, W&H®, BIEN-AIR®
\$1,674.75



FLASH PEARL

AIR POLISHING POWDER

CALCIUM BASED, SPHERICAL PARTICLES

Suitable for all brands of air polishers

FLASH pearl granules are small and spherically shaped compared to particles of sodium bicarbonate powder. This means more contact and better access to clean all target areas effectively.

A wider working angle also provides greater treatment safety. The spherical shape of FLASH pearl gives a smooth finish to tooth surfaces compared to the effects of the sharper-edged particles of sodium bicarbonate. FLASH pearl leaves teeth sparkling without damaging dental enamel.



FEATURES:

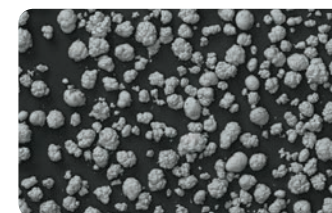
- 4 bottles packed in a box
- Each bottle contains 300 gms
- Comes with a measuring cup for your convenience
- Safe for patients suffering high blood pressure
- Natural taste – sodium free
- Prevents handpiece from clogging
- Quick and powerful stain removal
- Does not damage the tooth's surface

MODEL: FLASH PEARL
(4 x 300 G BOTTLES)
ORDER CODE: Y900698

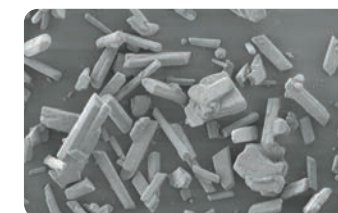
\$173.25

SPHERICAL GRANULES REMOVE RESIDUES FROM EVERY CORNER

FLASH pearl granules are small and spherically shaped compared to particles of sodium bicarbonate powder. This means more contact and better access to clean all target areas effectively. A wider working angle also provides greater treatment safety.



FLASH PEARL



CONVENTIONAL SODIUM BI-CARBONATE POWDER

FLASH PEARL ROLL SMOOTHLY OVER TOOTH SURFACES

The spherical shape of FLASH pearl gives a smooth finish to tooth surfaces compared to the effects of the sharper-edged particles of sodium bicarbonate. FLASH pearl leave teeth sparkling without damaging dental enamel.



FLASH PEARL AVOIDS SURFACE DAMAGE



CONVENTIONAL BI-CARBONATE IS AGGRESSIVE

PERIO-MATE BIOFILM ERASER

Perio-Mate is used in the treatment of periodontal pockets and peri-implantitis. Avoiding injury to the soft tissues and root surfaces inside delicate periodontal pockets during cleaning procedures is crucial. The Perio-Mate ultrafine water spray and glycine-based Perio-Mate Powder match to gently eradicate biofilm in periodontal pockets in just 20 seconds. The combination of Perio-Mate slim nozzle and fine, thin and flexible plastic nozzle tips make procedures safer while offering optimal visibility.

ADVANTAGES:

- Innovative nozzle tip
- Precise, flawless powder flow
- Maintenance
- Powder control ring
- Slim Nozzle Design
- Smooth 360 degree rotation

FOR NSK COUPLING

MODEL: PER-PTL-P
ORDER CODE: Y1002654

\$1,569.75

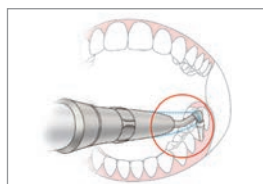
AVAILABLE TO FIT KAVO®,
SIRONA®, W&H®, BIEN-AIR®

\$1,674.75



FLEXIBLE PLASTIC NOZZLE TIP DESIGN ENSURES ACCESSIBILITY AND IS GENTLE TO THE POCKET

The slim nozzle tip possesses just the right degree of flexibility to pass smoothly over tooth surfaces, and can be easily inserted into tight pockets and the root surfaces of adjacent teeth without causing the patient discomfort.



SLIM NOZZLE FACILITATES OPERATION IN THE NARROW CONFINES OF THE ORAL CAVITY

The long, narrow nozzle shape is designed to allow easy access to areas that require inserting the handpiece at an angle, such as between molars.



POWDER CONTROL RING

The Perio-Mate's convenient Powder Control Ring makes fine-tuning powder flow simple and intuitive with quick fingertip adjustments. In addition to easily controlling and stopping the flow of powder in this way, you can cleanse the treatment area from biofilm uninterruptedly.



OPTIMIZED NOZZLE DESIGN BASED ON FLUID ANALYSIS ENSURES FLAWLESS POWDER FLOW IN THE POCKET

NSK's analysis of fluid dynamics gained through years of experience in developing turbine technology fully takes into account how a clinician must maneuver in the limited space inside the pocket.



SMOOTH 360-DEGREE ROTATION FOR SAFE AND ACCURATE OPERATION

The handpiece can easily be rotated using the fingertips even while performing complex operations. The nozzle tip allows easy access to difficult to reach areas, and does not adversely affect neighbouring teeth and contours.



MAINTENANCE

The nozzle with its nozzle tip, handpiece and powder chamber can be easily dismantled for cleaning and decontamination.

PERIO-MATE POWDER

BIO FILM ERASER POWDER

Glycine-based, mean particle size <45µm.

FEATURES:

- 4 bottles packed in a box
- Each bottle contains 100 gms
- Comes with a measuring cup for your convenience

MODEL: PERIO-MATE POWDER
(2 X 160G BOTTLES)

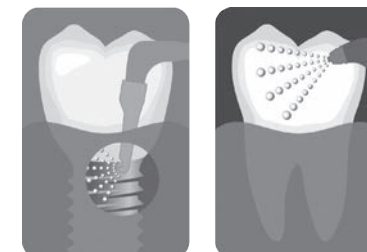
ORDER CODE: Y900938G

\$132.83



NSK'S INNOVATIVE NOZZLE TIP

NSK's new nozzle tip design incorporates semitransparent materials that promote greater visibility during procedures. Hygienic single use tips mean enhanced usability and safety.



Speeds indicated above correspond to micromotor speed selected.



SURGIC PRO FOR IMPLANT AND ORAL SURGERY

LED ILLUMINATION

Multi Function Brushless Surgical Micromotor with USB data storage facility. Intelligent, intuitive and accurate.

One unit for many surgical applications with USB port for easy data storage. Control unit with Advanced Handpiece Calibration (AHC) – High Torque Accuracy NSK Surgic Pro+ automatically calibrates the micromotor and the handpiece to the rotational resistance of each individual handpiece prior to operation. Surgic Pro+ offers speed and high torque accuracy for maximum safety during operation.

FEATURES:

- Powerful torque (up to 80Ncm)
- Wide speed range (200 to 40,000min⁻¹)
- High torque accuracy
- Lightest and smallest micromotor
- LED illumination (over 32,000LUX)
- Excellent durability
- Autoclavable, thermo-disinfectable and maintenance free brushless design

ORDER CODE: Y1001934
SURGIC PRO W/20:1 HP,
NON-OPTIC PLUS NO USB

\$6,924.23

ORDER CODE: Y1001933
SURGIC PRO W/20:1 HP,
LED PLUS NO USB

\$8,079.23

ORDER CODE: Y1001932
SURGIC PRO+ W/20:1 HP,
LED PLUS USB

Treatment data can be accessed and downloaded using a USB memory stick
\$8,893.50



ORDER CODE: Y1002096
SURGIC PRO+ W/20:1
DISMANTLEABLE HP, LED PLUS USB
\$8,893.50



SURGICAL AND IMPLANTS VARIOSURG3 FOR PIEZO SURGERY

LED ILLUMINATION

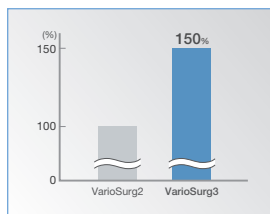
Multi Function Piezo Electric Unit for Minimally Invasive Surgery

Sinus lifts, extractions and bone grafting are all too simple for this powerful and intuitive machine.

- Minimal invasive surgery. Eliminates heat and reduces bleeding during operation
- Ergonomics and visibility. Optic handpiece is lightweight and slimline
- Safe. Soft tissue damage is minimal even during accidental contact
- Accuracy and precision. Minimal blood during cavitation ensures a clearer surgical site

FEATURES:

- Major Power Boost
- 3 Modes (SURG, ENDO, PERIO)
- Selectable Burst Mode for added power
- 9 Programs (SURG x 5, ENDO x 2, PERIO x 2)
- Adjustable LED Light Intensity
- Automatic Cleaning Mode
- Feedback Function
- Auto Tuning Function
- Dynamic Link Feature



MAJOR POWER BOOST – UP 50 PERCENT

Capable of generating a maximum of 150 percent of the power its predecessor produced (in Surg Mode), the VarioSurg3 effectively shortens treatment time in combination with any of the sharp tips available.

*When setting power level more than 100 percent, please make sure to use tips that correspond to high power.

ORDER CODE: Y1002726
VARIOSURG3 (230V)
\$11,544.23



STERILISATION CASSETTE

MODEL: ES-SC
ORDER CODE: Z313101
Included in complete set

\$584.43

VARIOSURG BASIC KIT

MODEL: BASIC H-S KIT
ORDER CODE: Y1002775
(Includes H-SG1, SG3, SG5, SG6D, SG7D, SG11 tips)
Included in complete set

\$2,021.25



LINK THE SURGICPRO+ AND VARIOSURG3

**FOR DUAL POWER AND PERFORMANCE
WITH THE LINK FUNCTION**

MODEL: LINK SET (STAND & CABLE)
ORDER CODE: Y1002729

\$1,033.73



CARRYING CASE SURGICPRO (OPTIONAL)

The NSK Carrying Case can accommodate
all Surgic Pro components as well as the
optional sterilisation cassette.

– Dimensions W534 x D427 x H207 (mm)

ORDER CODE: Y1001952

\$702.24

STERILISATION CASSETTE

MODEL: VA-SG-CASE
ORDER CODE: 20001326

\$584.43



IRRIGATION TUBE

(PACK OF 5)
ORDER CODE: Y900113

\$103.95



iCART DUO

ORDER CODE: S9090

\$1,700.16



iSD900



ISD900

Cordless Prosthodontic Screwdriver with Torque Calibration System (TCS)
NSK is introducing the iSD900 cordless screwdriver with Torque Calibration System (TCS) for prosthodontic screw fixing procedures. iSD900 will guarantee precise torque control due to the unique NSK torque calibration system which is extremely easy to use. The iSD900 will help to save time and allow precise risk-free tightening of screws. Clinicians can depend on iSD900 for safety and productivity.

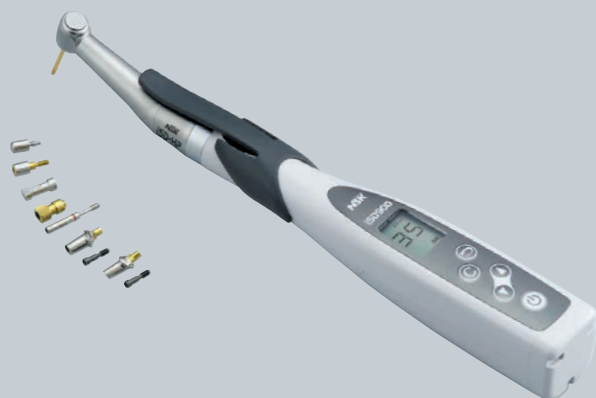
TORQUE CALIBRATION SYSTEM (TCS)

ISD900 COMPLETE SETS

MODEL: ISD900 (230V) ORDER CODE: Y1001358

CALIBRATION MODE • TORQUE CALIBRATION

\$3,336.79



SURGICAL IMPLANT HANDPIECES



20:1 Reduction

- Titanium Body with Scratch Resistant DURACOAT
- Cellular Glass Optics
- Push Button Chuck
- Max. Speed: 2,000 min⁻¹
- Max. Torque: 80 Ncm

OPTIC MODEL: X-SG20L

ORDER CODE: C1003

\$2,517.90



20:1 Reduction

- Stainless Steel Body
- Push Button Chuck
- External and internal cooling (Kirschner and Meyer)
- Double Sealing System
- Max. Torque: 80 Ncm
- Max. Speed: 2,000 min⁻¹

NON-OPTIC MODEL: SG20

ORDER CODE: C1010

\$1,533.84

DISMANTLING SURGICAL IMPLANT HANDPIECES

20:1



OPTIC MODEL: X-DSG20L

ORDER CODE: C1068

\$2,714.25

20:1 Reduction

- Titanium Body with Scratch Resistant DURACOAT
- Max. Speed: 2,000 min⁻¹
- Max. Torque: 80 Ncm

NON-OPTIC MODEL: X-DSG20

ORDER CODE: C1067

\$2,067.45



OPTIC MODEL: X-DSG20LH

ORDER CODE: C1076

\$2,714.25

20:1 Reduction

- Titanium Body with Scratch Resistant DURACOAT
- Max. Speed: 2,000 min⁻¹
- Max. Torque: 80 Ncm

NON-OPTIC MODEL: X-DSG20H

ORDER CODE: C1075

\$2,067.45



SURGICAL HANDPIECES – OPTIC

1:1 Direct Drive

- Titanium Body with Scratch Resistant DURACOAT
- Cellular Glass Optics
- Push Button Chuck
- Clean head system
- Max. Speed: 40,000 min⁻¹

OPTIC MODEL: X-SG25L

ORDER CODE: C1011

\$2,227.99



SURGICAL HANDPIECES

1:3 Increasing

- Titanium Body with Scratch Resistant DURACOAT
- Cellular Glass Optics
- Push Button Chuck
- Max. Speed: 120,000 min⁻¹ Optic

OPTIC MODEL: X-SG93L

ORDER CODE: C1004

\$2,418.57

NON-OPTIC MODEL: X-SG93

ORDER CODE: C1007

\$2,312.31

1:3



IMPLANT HANDPIECES

1:3 Increasing

- Titanium Body with Scratch Resistant DURAGRIP
- Cellular Glass Optics (Z-SG45L)
- Ceramic Bearings
- Clean Head System
- Push Button Chuck
- External cooling
- For FG burs (ø1.6 / 20-25 mm)
- Anti Heat System
- DLC Coating
- Max. Speed: 120,000 min⁻¹

OPTIC MODEL: Z-SG45L

ORDER CODE: C1107

\$2,055.90

NON-OPTIC MODEL: Z-SG45

ORDER CODE: C1108

\$1,651.65

1:1



STRAIGHT HANDPIECES

1:1 Straight Handpiece

- Titanium Body with Scratch Resistant DURACOAT
- Cellular Glass Optics
- For HP burs (ø2.35)
- For CA burs (ø2.35) with bur stopper
- Max. Speed: 40,000 min⁻¹

OPTIC MODEL: X-SG65L

ORDER CODE: H1009

\$2,194.50

NON-OPTIC MODEL: X-SG65

ORDER CODE: H1038

\$1,761.38



STRAIGHT HANDPIECES – NON OPTIC

1:1 Direct Drive

- For surgical burs (ø2.35)
- Twist chuck
- Max. Speed: 40,000 min⁻¹

MODEL: SGS-ES

ORDER CODE: H264

\$1406.79

STRAIGHT HANDPIECES – NON OPTIC

1:2 Increasing

- For surgical burs (ø2.35)
- Twist chuck
- Max. Speed: 80,000 min⁻¹

MODEL: SGS-E2S

ORDER CODE: H266

\$1,649.34



20°ANGLE HANDPIECES – NON OPTIC

1:1 Direct Drive

- For surgical burs (ø2.35)
- Twist chuck
- Max. Speed: 40,000 min⁻¹

MODEL: SGA-ES

ORDER CODE: H263

\$1,950.80

20°ANGLE HANDPIECES – NON OPTIC

1:2 Increasing

- For surgical burs (ø2.35)
- Twist chuck
- Max. Speed: 80,000 min⁻¹

MODEL: SGA-E2S

ORDER CODE: H265

\$2,288.06



1:2

ENDO-MATE **AT**

ENDO-MATE
TC2

iPexII

ENDODONTICS



ENDO-MATE AT

This compact endodontic motor has a wide range of torque and speed settings, allowing use Ni-Ti files from virtually all major manufacturers.

- Fits major brands of files
- Torque control, with integrated auto-reverse function
- Compact and stylish design desktop unit
- Large display screen provides high visibility
- Flat control panel allows simple and user friendly operation
- Lightweight, smart and high visibility handpiece.

Contents: Control unit, Motor handpiece, Contra Angle head (IFX75), handpiece stand, AC adaptor

MODEL: ENDO-MATE AT (230V)
ORDER CODE: Y1002190

\$1,674.75

ENDO-MATE TC2

This compact endodontic motor has a wide range of torque and speed settings, allowing use Ni-Ti files from virtually all major manufacturers.

- Fits major brands of files
- Torque control, with an auto-reverse function
- Compact and stylish design desktop unit
- Wide screen provides high visibility
- Flat control panel allows simple and user friendly operation
- Lightweight, smart and high visibility handpiece.

MODEL: ENDO-MATE TC2
(230V) MP-F16R HEAD
ORDER CODE: Y1001027

\$2,094.75

MODEL: ENDO-MATE TC2
(230V) MPA-F16R HEAD
ORDER CODE: Y1001028

\$2,514.75

iPEX II

PRECISION APEX LOCATER

- High-precision root canal measurement generated by using SmartLogic
- Auto-detects the apex accurately in any conditions, dry or wet
- A stylish and compact body requiring only a small space. It can even be located on the dental equipment console
- Three different alert sounds depending on the location of the file tip, ensuring precise procedure
- A big three-colour LCD panel with very low reflectivity, allowing Clinicians to accurately and instantly monitor procedure progress
- Energy saving and low operation cost.

Contents: Control unit, Ipex II probe (1.8m), Ipex II File clip (3 pcs.), lip hook (3 pcs), AAA manganese dry batteries (3 pcs.), Ipex II tester.

MODEL: IPEX II
COMPLETE SET
ORDER CODE: Y1002208

\$1,569.75



ULTIMATE XL SERIES

Ultimate XL series offers the choice of 4 control units for easy location in any available space, and to accommodate all user requirements. All functions are controlled by the NSK microcomputer which assures smoothness throughout all speed ranges including start and stop

ULTIMATE XL BENCH TOP SYSTEM

– Speed 1,000-50,000 min⁻¹

TORQUE MICROMOTOR

MODEL: UMXL-GT (230V)
ORDER CODE: Y141469

COMPACT MICROMOTOR

MODEL: UMXL-GC (230V)
ORDER CODE: Y141470

\$2,714.25



ULTIMATE XL-K KNEE CONTROL SYSTEM

– Speed 1,000-50,000 min⁻¹

TORQUE MICROMOTOR

MODEL: UMXL-KT (230V)
ORDER CODE: Y141495

COMPACT MICROMOTOR

MODEL: UMXL-KC (230V)
ORDER CODE: Y141496

\$2,714.25



FEATURES:

- Choice of Torque or Compact Micro Motor for any control system
- Ripple-free smooth rotation with 180° vector control system
- Powerful and stable torque across the entire speed range
- Ergo handpiece design for long term user hand comfort
- Lightweight compact handpiece body reduces hand fatigue and improves balance
- Unique dust-proof mechanism prevents internal contamination and premature wear
- Minimal vibration and noise from hermetically shielded micro motor
- 30% increased chuck strength enables application for a wide variety of materials

ULTIMATE XL-D BENCH TOP TOWER SYSTEM

– Speed 1,000-50,000 min⁻¹

TORQUE MICROMOTOR

MODEL: UMXL-DT (230V)
ORDER CODE: Y141504

COMPACT MICROMOTOR

MODEL: UMXL-DC (230V)
ORDER CODE: Y141505

\$2,714.25



ULTIMATE XL-F FLOOR TYPE FOOT CONTROL SYSTEM

– Speed 1,000-40,000 min⁻¹

TORQUE MICROMOTOR

MODEL: UMXL-FT (230V)
ORDER CODE: Y141513

COMPACT MICROMOTOR

MODEL: UMXL-FC (230V)
ORDER CODE: Y141514

\$2,714.25





COMPACT MICROMOTOR

FEATURES:

- Max. Torque: 6.0 Ncm
- Weight: 181 g (Cord not included)

ORDER CODE: Y141444

\$1,677.06



TORQUE MICROMOTOR

FEATURES:

- Max. Torque: 8.7 Ncm
- Weight: 219 g (Cord not included)

ORDER CODE: Y141440

\$1,677.06



E-TYPE

FEATURES:

- Max. Torque: 8.7 Ncm
- Weight: 219 g (Cord not included)

ORDER CODE: E342

\$1,768.31

VOLVERE i7 CORELESS MICROMOTOR

The VOLVERE i7 is another advance in NSK's quest to provide dental technicians access to its globally renowned dental laboratory engines. The stylish VOLVERE i7 delivers a compact, advanced design, all essential features and excellent value for money.

FEATURES:

- Light and compact to fit into the smallest space
- Microcomputer Control
- Auto Cruise Function

Contents: Control unit, Micromotor Handpiece, Foot control, Handpiece Stand

STANDARD MODEL:
VOLVERE i7 RM
ORDER CODE: Y1003493

\$1,957.73

E-TYPE MODEL:
VOLVERE i7 E
ORDER CODE: Y1003494

\$1,611.23



VOLVERE i7

Standard Micromotor



E-Type Micromotor

PRESTO AQUA

LED ILLUMINATION

Achieve optimum performance and precision with the lubrication-free air turbine handpiece featuring LED illumination and water coolant spray.

FEATURES:

- 320,000 min⁻¹
- Water coolant spray
- Requires no lubrication
- Swivel twist-free handpiece
- Low noise and vibration
- Unique dust-proof mechanism
- NSK LED is equivalent to daylight

Contents: PRESTO AQUA LUX Control unit, PRESTO AQUA LUX handpiece, PR-AQL Hose, Foot control (AFC-40), Secondary hose for PRESTO, Handpiece stand, PRESTO AQUA LUX Cord, AC Adaptor

OPTIC
MODEL: PRESTO AQUA LUX
ORDER CODE: Y1001150

\$4,614.23

NON-OPTIC
MODEL: PRESTO AQUA II
ORDER CODE: Y150023

\$3,459.23



PRESTO AQUA

DENTALONE PORTABLE UNIT

Dentalone is the dentist's office mobile cart easily expandable from 'carry' position to a comfortable, user-friendly dental treatment cart ready to use anywhere, anytime.

Dentalone offers a large range of instruments and extended functionalities, thus practitioners can realise dental treatments outside any dentist's office.

FEATURES:

- Compact
- Simple to use
- Mobile
- Plug and play system
- Easy to carry
- User-friendly
- Extensible to Cart function
- Large range functionalities

CONTENT:

- Illuminated LCD control panel
- Brushless NLX nano micromotor with LED Light
- Integrated Multi Function Ultrasonic Scaler Varios 170 with LED Light
- Syringe with air/water/spray with LED Light
- Cannula for saliva
- Water tank for spray
- Tank for vacuum
- Built in compressor
- Built in suction pump
- Variable foot-control

DENTALONE UNIT

MODEL: DENTALONE
ORDER CODE: S9070

\$21,994.50



VIVAMATE G5 PORTABLE UNIT

FEATURES AND CONTENT:

- Speed: 3,000-30,000 min⁻¹
- Portable and compact unit, weighing 370g
- Capability to connect to external water supply
- Micro-motor with LED light
- Equipped with rechargeable battery and power cord
- Optional Foot Control
- Torque is 3 Ncm (30,000 min⁻¹ while rotating)
- Dimensions Unit: W72, D180 x H36 (mm)
- Complete system includes: Control unit, handpiece stand, motor with motor cord, AC adaptor, AC cord and carrying case

VIVAMATE G5 PORTABLE UNIT

MODEL: VIVAMATE G5
ORDER CODE: Y1002801

\$3,112.73

BENEFITS:

- Ability to use as a portable or benchtop unit
- Battery has a drive time of approximately 1 hour of continued use and 2 hour recharge time
- Suitable for denture adjustments and general applications
- Simple to use operation
- When operated via the foot control operator is able to use in auto cruise mode



CARE & MAINTENANCE

iCARE

iCare sets a new standard for handpiece maintenance systems. In one stylish and compact system it offers both ease of use and multiple functions to assure ideal cleaning and lubrication.

The correct solution volume is preset based on handpiece type, and maintenance is initiated at the touch of a button. The chuck cleaning system keeps chucks pristine, and the purging select mode allows purge time to be adjusted depending on the situation for truly comprehensive maintenance.

MODEL: iCARE C2
ORDER CODE: Y1002787
\$5,082.00

MODEL: iCARE C3
ORDER CODE: Y1002788
\$5,428.50

Thanks to its stylish and compact body, iCare is also space efficient and is harmonious to the clinical practice environment.

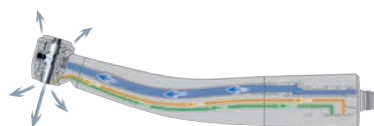
iCare automatically cleans and lubricates up to four handpieces in less than two minutes.

The full 1.2 litre integrated solution tank is sufficient for up to 5,000 individual handpiece maintenance cycles.

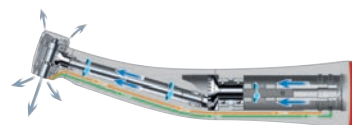


ROTATIONAL MAINTENANCE SYSTEM

A major advantage of rotation during the cleaning process is the saturation of all internal components.



HIGH SPEED HANDPIECES



LOW SPEED HANDPIECES



PANA SPRAY PLUS (500ML)

PANA SPRAY Plus is a specially formulated, highly effective general handpiece and air motor lubricant. Frequent application of PANA SPRAY Plus will ensure handpiece and air motor performance and durability. Apply PANA SPRAY Plus every time before autoclaving any handpiece or air motor. Adapters available for all handpiece brands.

ORDER CODE (SINGLE CANS)
Z182100G

\$41.58

ORDER CODE (PK OF 6)
Y900630G

\$249.48



CARE & MAINTENANCE INSTRUCTIONS

1. PREPARATION

- Remove handpiece from tubing
- Remove bur
- Do not submerge handpiece in any solution

2A. AUTOMATIC CLEANING AND DISINFECTION USING A THERMO/WASHER DISINFECTOR

- Always ensure that handpieces are placed on the correct adaptors
- Cleaning agent pH level must be between 2.5-10.5
- Rinse cycle must be activated

OR (if automatic method is not available see 2b below)

2B. MANUAL CLEANING USING TAP WATER, BRUSHES AND CLOTHS

- Clean handpiece under cold or tepid running water

3. INSPECT

- Inspect handpieces for debris and repeat above process if necessary

4. DRYING

- The drying procedure is normally part of the cleaning programme of the thermo/washer disinfectant alternatively dry manually using a tissue

5A. AUTOMATIC LUBRICATION USING NSK iCARE

- Check machine is connected and working correctly
- Connect handpiece to correct port
- Select appropriate cycle (refer to NSK iCare user manual)
- Always lubricate straight handpieces with closed chuck and blanking piece inserted
- Always complete steps 2,3,4,5 in quick succession
- Lubricate the Chuck Mechanism by using the chuck cleaning function on the iCare

5B. MANUAL LUBRICATION USING NSK PANA SPRAY PLUS

- Select correct nozzle for handpiece (see list below)
- Shake spray can
- Keep spray can in upright position
- Insert nozzle into handpiece
- Always lubricate straight handpieces with closed chuck and blanking piece inserted
- Spray handpiece for 2-3 seconds holding a clean tissue over the head end
- Check tissue for debris and if oil is not running clean repeat process until handpiece is clean and free of debris
- Lubricate chuck mechanism using PANA SPRAY plus with tip nozzle weekly
- Always complete steps 2,3,4,5 in quick succession

PURGE OUT EXCESS LUBRICANT FROM THE HANDPIECE AFTER MANUAL LUBRICATION

6. PACKAGING

- Pack in accordance with current applicable standards/legislation if using a B or S type autoclave. If using an N type autoclave, pack **AFTER** sterilisation

7. STERILISATION

- NSK Handpieces are autoclavable up to 135°C. Always remove from autoclave as soon as cycle is complete

8. STORAGE

- Store handpieces protected from dust, dirt and microorganisms, ideally in an upright position (head up)
- Handpieces **MUST** be stored dry
- Always comply with expiry dates of sterilised items in accordance with current applicable standards/legislation

PANA SPRAY PLUS NOZZLES ALWAYS CHOOSE THE RIGHT ONE FOR YOUR HANDPIECE



KV Nozzle – Z090-051
For KaVo® MULTiflex Coupling



SR Nozzle – Z090-052
For Sirona® Quick Coupling



BA Nozzle – Z090-053
For Bien-Air® Unifix® Coupling



WH Nozzle – Z090-054
For W&H® Roto Quick® Coupling



For Phatelus Air Motor Heads – M070-090
To be used with P183-090



QD Nozzle – Z096-090
For QD Couplings



Standard E-Type Nozzle – Z019-090
For E-Type attachments



NSK Surgical Head Nozzle – Z114-090
For E-Type attachments and surgical heads: SGM-I, SGMS-I and SGQ-H



Endo-Mate Head Nozzle – Z256-090.
For ENDO-MATE DT, TC, TC2 & TASKAL Wizard heads



Tip Nozzle – Z020-201
For Borden 2/3 and Midwest 4 hole turbines and Borden 2/3 and Midwest 4 hole air motors and chuck mechanism



NSK Nozzle – P183-090
For high speed instruments which attach to NSK Flexi Quick Coupling

ALWAYS SELECT THE CORRECT ADAPTOR BEFORE CLEANING AND LUBRICATION



E-Type Handpiece
For All Brands ISO E-Type and E-Type LUX Low Speed handpiece attachments – Z280-035 E-Type



NSK Coupling
For High Speed handpieces that connect to NSK couplings – Z257010 NSK



Borden 2 hole
For Borden 2 hole High Speed handpieces – T904 Borden®



Kavo Coupling
For High Speed handpieces that connect to Kavo® Multiflex LUX® couplings – Z257020 Kavo®



Sirona Coupling
For High Speed handpieces that connect to Sirona® Quick couplings – Z257023 Sirona®



W&H Coupling
For High Speed handpieces that connect to W&H® Roto Quick® couplings – Z257021 W&H®



Bien Air Coupling
For High Speed handpieces that connect to Bien-Air® Unifix® couplings – Z280022 Bien-Air®



F-Type Head
For ENDO-MATE DT, TC / TASKAL Wizard Heads – Z280-042 F-Type

ALWAYS SELECT THE CORRECT SPRAY NOZZLE BEFORE CLEANING & LUBRICATION

It is preferable to purge any excess solution by briefly operating the handpiece. When purging cover the handpiece head with a tissue.

Firmly attach the nozzle onto the valve at the top of the Pana Spray Plus can. Keep the spray can in an upright position.



HIGH SPEED OPTIC & NON OPTIC HANDPIECES THAT CONNECT DIRECT TO:

NSK type nozzle P183-090



Kavo® type nozzle Z090-051



W&H® type nozzle Z090-054



Sirona® type nozzle Z090-052



Bien-Air® type nozzle Z090-053



QD type nozzle Z096-090



SUPPORT

PRODUCT INFORMATION & TECHNICAL SUPPORT

1300 44 33 21 (Australia) or 0800 44 33 21 (New Zealand)

Email: info@nskoceania.com.au

www.nskoceania.com.au

CONTRA-ANGLES, HANDPIECES, SHANKS & HEADS:

E Type (all brands) Z019-090



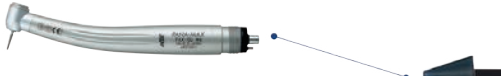
ISO E Type (all brands) and NSK Surgical Heads
SGM-I, SGMS-I & SGQ-H Z114-090



NSK HEADS used with Endo-Mate DT, TC, TC2
and TASKAL Wizard Z256-090



Tip nozzle for Borden 2/3 and Midwest 4 hole turbines
and Borden 2/3 and Midwest 4 hole air motors Z020-201



Tip nozzle for chuck
mechanism maintenance
Z020-201



Kavo® and MULTIflex LUX® are registered trademarks of Kaltenbach & Voigt GmbH & Co., Germany. Sirona® is a registered trademark of Sirona Dental Systems GmbH, Germany. W&H® and Roto Quick® are registered trademarks of W&H Dentalwerk Bürmoos GmbH, Austria. Bien-Air® and Unifix® are registered trademarks of Bien-Air Dental S.A., Switzerland.

AUTOMATIC CLEANING AND LUBRICATION USING NSK ICARE IS SIMPLE

A.

Check oil level indicator light. Add more oil if required (light will come on when oil comes down to 150ml or less).



B.

Open the door and connect 1, 2, 3 or 4 handpieces to the correct handpiece adaptor. Close the door (iCare will not operate if the door is open).



C.

Select the desired purge programme Mode. By selecting the selection button (1, 2 or 3), until the mode light is illuminated.



- S Mode for High Speed handpieces (air turbines)
Cycle time 28 seconds
- S Mode for Blue band Low Speed handpieces and NSK heads
Cycle time 50 secs
- M (Middle) Mode for High Speed handpieces (air turbines)
Cycle time 30 seconds
- M (Middle) Mode for Blue band Low Speed handpieces and NSK heads
Cycle time 64 secs
- L (Long) Mode for High Speed handpieces (air turbines)
Cycle time 33 seconds
- L (Long) Mode for Blue band Low Speed handpieces and NSK heads
Cycle time 84 secs

D.

Press the 'Start' button. The door should not be opened until the cycle is finished.





MODEL: iCLAVE PLUS
 ORDER CODE: Y1003077
\$9,990.00

iClave plus

iClave plus

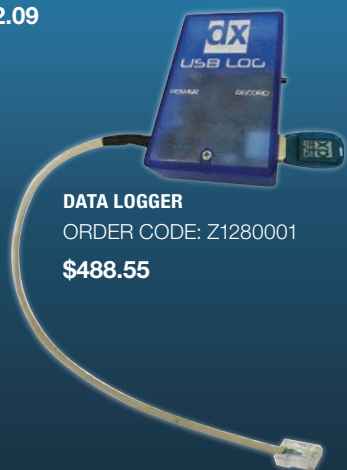
ACCESSORIES



WATER PURITY UNIT

ORDER CODE: Z1284001

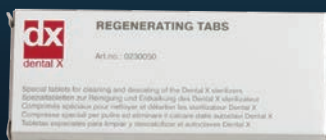
\$2,602.09



DATA LOGGER

ORDER CODE: Z1280001

\$488.55



REGENERATING TABLETS (PACK OF 10)

ORDER CODE: DX0230050

\$68.21

Deploying A Copper Chamber to Match the Advanced Class B Cycle Sterilization Capacity and Efficiency Standards

Air turbine, contra-angles, and other dynamic dental instruments consist of high-precision micro mechanisms and therefore benefit from careful sterilisation to maintain performance. NSK chose to use a highly conductive copper chamber to satisfy Class B, Europe's strictest sterilisation standard. The system delivers outstanding efficiency despite its large capacity.



Copper chamber



Stainless steel chamber

50% more capacity than conventional autoclave

The iClave plus can fully use its 18 litre capacity because it maintains even temperatures throughout the autoclave chamber and constantly controls the surface temperature. The iClave plus offers 50% more sterilisation space than a conventional stainless steel chamber of the same size, ensuring greater safety by reducing instrument overcrowding.

NSK Autoclave Benefits Include Combining High Heat Conductivity of Copper Chamber with Proprietary Heating System



Faster sterilization

The copper chamber and adaptive heat system allows sterilization in 18 and 35 minutes under Class S and B standards, respectively.

*Including drying phase

More efficient drying phase

In a conventional chamber, uneven temperatures cause condensation inside instruments, reducing drying efficiency. This issue is almost non-existent in the iClave plus when temperatures rise or fall.

More economical and environmentally friendly

A key factor in the greater efficiency of the iClave plus is that it can sterilize more instruments at a time. The iClave plus also lowers environmental impact because it consumes less electricity and water.

Gentle handpiece sterilization

Consistently even internal temperatures resulting from the use of a copper chamber and the adaptive heat system make it possible to control steam flow and eliminate heat fluctuations. With less thermal impact, sterilization of air turbines, contra-angles and other instruments is gentler and safer.

NSK TECH CAN SERVICE ANY NSK PRODUCT



NSK TECH

YOUR NSK HANDPIECES
CAN BE SERVICED IN
AUSTRALIA BY THE COMPANY
THAT MANUFACTURED
THEM IN JAPAN.

TO FIND OUT MORE
PLEASE CALL FREE PHONE
1300 443321
OR VISIT OUR
NSK TECH WEBSITE –
NSKTECH.COM.AU

**FOR EXPERT FACTORY SERVICE AND FAST RESPONSE
SEND YOUR NSK PRODUCTS DIRECT TO NSK TECH.**

BY POST:

NSK Tech, PO Box 163,
Rosebery, Sydney NSW 1445

BY COURIER:

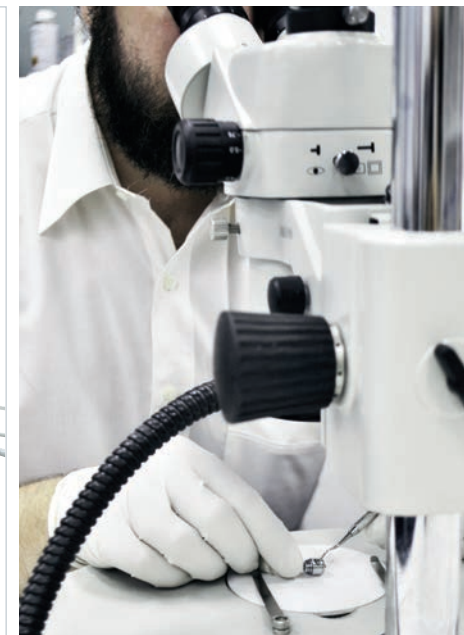
NSK Tech, Unit 12/809-821 Botany Road,
Rosebery NSW 2018

PRECISION SERVICE

Located in Sydney, the Australian NSK Technical Centre is a unique NSK factory-equipped technical service facility with the capability to rapidly restore all NSK products to their original NSK factory high performance specifications.

TECH EXPERTISE

- Rapid response – fast turnaround
- Dedicated service only for NSK products
- Individual product service history record maintenance
- Expert NSK factory-trained Precision Technicians
- NSK Tech uses only genuine NSK parts, components, tools and factory diagnostic equipment
- NSK factory-guaranteed
- Certified ISO 9001:2008



SCAN QR CODE TO VIEW
THE NSK TECH WEBSITE



NSK PRODUCT SPECIALISTS

Phil Fitzgibbon

Managing Director

M: 0417 248 436

E: phil@nskoceania.com.au

Julian Harden

QLD Territory Manager

M: 0439 260 006

E: julian@nskoceania.com.au

Janette Carroll

NSW Territory Manager

(NSW Southern Sydney Region)

M: 0439 199 979

E: janette@nskocenia.com.au

Ralf Wendel

NSW Territory Manager

(NSW Northern Sydney Region)

M: 0449 987 406

E: ralf@nskoceania.com.au

Stuart Blair

VIC/TAS Territory Manager

M: 0427 833 684

E: stuart@nskoceania.com.au

Erik Leinius

SA/WA/NT Territory Manager

M: 0419 251 216

E: erik@nskoceania.com.au

DEALER NETWORK

NSK QUALITY AUTHORISED DEALER NETWORK

PLEASE SEE BELOW A LIST OF ALL NSK'S AUTHORISED DISTRIBUTORS THROUGHOUT AUSTRALIA.

NATIONAL

**DENTAVISION PTY LTD**

Tel: 1800 806 640

Fax: 1300 659 051

Email: orders@dentavision.com.au

Web: www.dentavision.com.au

**GUNZ DENTAL PTY LTD**

Freephone: 1800 025 300

Freefax: 1800 025 202

Email: dentalsales@gunz.com.au

Web: www.gunz.com.au

**HENRY SCHEIN HALAS**

Tel: 1300 65 88 22

Fax: 1300 65 88 10

Email: info@henryschein.com.au

Web: www.henryschein.com.au

**INDEPENDENT DENTAL SUPPLIES PTY LTD**

Tel: 1800 044 998

Fax: (02) 4969 5180

Email: orders@independentdental.com.au

Web: www.independentdental.com.au

**IVOCLAR VIVADENT PTY LTD**

Tel: (03) 9795 9599

Fax: (03) 9795 9645

Web: www.ivoclarvivadent.com.au

NSK LAB PRODUCTS ONLY

**MEDIDENT**

Tel: 1300 886 674

Fax: 1300 886 675

Email: sales@medident.com.au

Web: www.medident.com.au

NEW SOUTH WALES + AUSTRALIAN CAPITAL TERRITORY



NEOSS AUSTRALIA PTY LTD

Tel: (07) 3216 0165
Fax: (07) 3116 0135
Email: info.au@neoss.com.au
Web: www.neoss.com
NSK SURGICAL PRODUCTS ONLY



OPTIMA HEALTHCARE GROUP

Tel: 1800 266 515
Fax: (03) 5275 8770
Email: info@optimahg.com.au
Web: www.optimahg.com.au



OSSTEM AUSTRALIA PTY LTD

Tel: 02 9889 2675
Fax: 02 9889 1775
Email: info@osstem.com.au
Web: au.osstem.com
NSK SURGICAL PRODUCTS ONLY



STRAUMANN

Tel: 1800 660 330
Fax: (03) 9646 7232
Email: info.au@straumann.com
Web: www.straumann.com.au
NSK SURGICAL PRODUCTS ONLY



SOUTHERN IMPLANTS

Tel: 02 8076 9337
Email: info@southernimplants.com.au
Web: www.southernimplants.com.au
NSK SURGICAL PRODUCTS ONLY



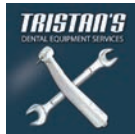
ALPHABOND DENTAL PTY LTD

Tel: (02) 9417 6660
Toll free: 1800 643 477
Fax: (02) 9417 3001
Email: stan@alphabond.com.au
Web: www.alphabond.com.au
NSK LAB PRODUCTS ONLY



ADR DENTAL

Tel: +61 2 9750 1919
Fax: +61 2 9750 0633
Email: sales@adr dental.com.au
Web: www.adrdental.com.au



TRISTAN'S DENTAL EQUIPMENT SERVICES PTY LTD

Tel: 0402 215 758 / 040 1654 031
Fax: (02) 9603 1029
Email: info@tristansdental.com.au
Web: www.tristansdental.com.au



CRITICAL DENTAL

Tel: 02 8883 0674
Mob: 0418 442 903
Email: justin@criticaldental.com.au
Web: www.criticaldental.com.au

QUEENSLAND



LEADING DENTAL

Tel: (07) 3139 1549
Fax: (07) 3803 3260
Email: sales@leadingdental.com.au
Web: www.leadingdental.com.au



MEA DENTAL PTY LTD T/A DENTAL DEPOT

Tel: 1800 333 768
Fax: (07) 3862 3109
Email: sales@dentaldepot.com.au
Web: www.dentaldepot.com.au

VICTORIA



BORG DENTAL

Tel: (03) 9329 6276
Fax: (03) 9329 6291
Email: info@borgdental.com.au
Web: www.borgdental.com.au



DENTEQUIP

Tel: 1800 DENTEQUIP (1800 336 837)
Fax: (03) 9314 8842
Email: info@dentequip.com.au
Web: www.dentequip.com.au



ALLDENT DETAILS

Ph: 03 9646 3939
E: sales@alldent.com.au
W: www.alldent.com.au

SOUTH AUSTRALIA



DENTAL CONCEPTS

Tel: (08) 8177 0600
Fax: (08) 8177 0044
Email: sales@dentalconcepts.com.au
Web: www.dentalconcepts.com.au

WESTERN AUSTRALIA



MED AND DENT (WA)

Tel: (08) 9337 4226
Fax: (08) 9337 4228
Email: meddent@westnet.com.au
Web: www.medanddent.com.au



WEST COAST DENTAL DEPOT

Tel: (08) 9479 3244
Fax: (08) 9479 3255
Email: mike@westcoastdental.com.au
Web: www.westcoastdental.com.au



CREATE IT.

Product Information | Technical Support
Freephone 1300 44 33 21
Email: info@nskoceania.com.au
www.nskoceania.com.au