

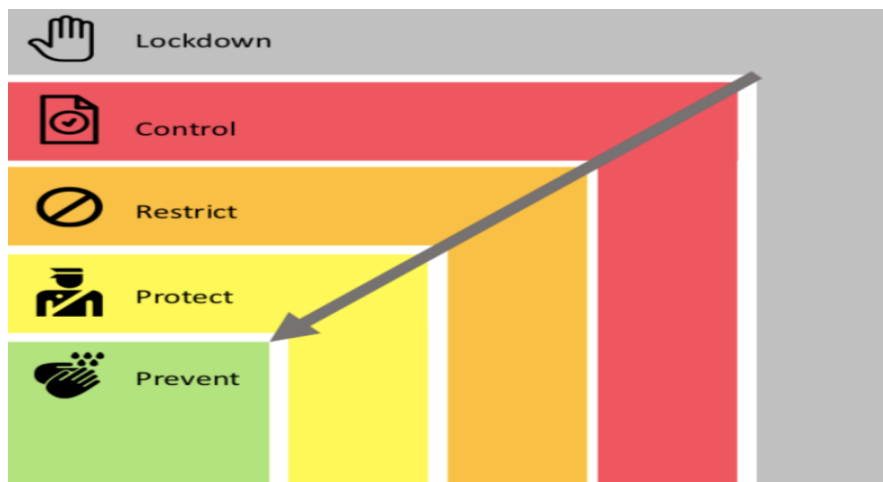


Community Living Burlington COVID-19 Visitors Information and Immunization Facts

February 18 2021

Dear families and friends of Community Living Burlington:

As you are aware, while our numbers in Halton Region continue to decline, the Ontario Government has ended the "Stay at home" order on February 16 and moved the Region of Halton into the Red zone.



This letter is notice of our visitation guidelines, while in the Red zone. It also includes vaccine information for the people we support and our employees.

Community Living Burlington is asking that family members reach out to their residential manager or assistant manager of the program where your family member lives, to arrange the time and date for your visits. The reason we are requesting planned visits are the strict criteria/guidelines that must be followed by yourself and the employees at our agency.

Our highest priority is to keep your family member, the other roommates of the house and the employees working at the home.

The Control/Red Zone Guidelines for Visits are:

- Residential care settings will allow outdoor visits of two people at a time.
- Physical distancing of 6 feet will be required for all visits.
- Families will be subject to strict health and safety protocols, including requiring visitors to pass active screening every time they visit.
- Families must comply with the infection prevention and control protocols at our agency.
- Families must wear a face covering during visits.



Community Living Burlington
COVID-19 Visitors Information and Immunization Facts

We understand that this is February and the anticipation of outdoor visits when it is this cold is not something anyone is excited about. However, this is the option we can provide at this time.

Day Supports:

At this time, we are not re-opening day supports. The key factor that drives this decision is our staffing complement. Peel and Toronto are still under the Stay at Home order. Many of our staff live in these Regions and it impacts their day care and on-line learning schooling for their children. Staffing at our agency is stretched to its limit.

We will be re-evaluating this weekly and we hope to have some good news for families soon.

The Prioritization for Covid-19 Immunization:

Initial supplies of authorized COVID-19 vaccines are not expected to be sufficient to offer vaccination to all Canadians in whom they are authorized for use until the end of summer 2021. Therefore, recommendations to prioritize key populations for early immunization have been made by our Government.

Please see the visual summary below of Immunization recommendations on the prioritization of key populations for COVID-19 vaccination. The people we support at Community Living Burlington and our employees fall in stage 1 and 2.

Stage 1 is defined as: (highest priority)

- Residents and staff of congregate living settings that provide care for seniors
- Adults 70 years of age and older, beginning with adults 80 years of age and older, then decreasing the age limit by 5-year increments
- Health care workers (all who work in health care settings and personal support workers whose work involves direct contact with patients)
- Adults in Indigenous communities (where infection can have disproportionate consequences)

Stage 2 is defined as:

- Residents and staff of other congregated care settings
- Adults 60-69 years of age, beginning with those 65 years of age and older
- Adults from Indigenous communities not offered the vaccine in Stage 1
- Frontline essential workers who cannot work virtually
- First Responders (police, firefighters)

Community Living Burlington wants to help you find reliable, truthful, and accurate information about COVID-19 vaccines. Follow these social media accounts to stay informed: @GovCanHealth @CPHO_Canada @ONThealth



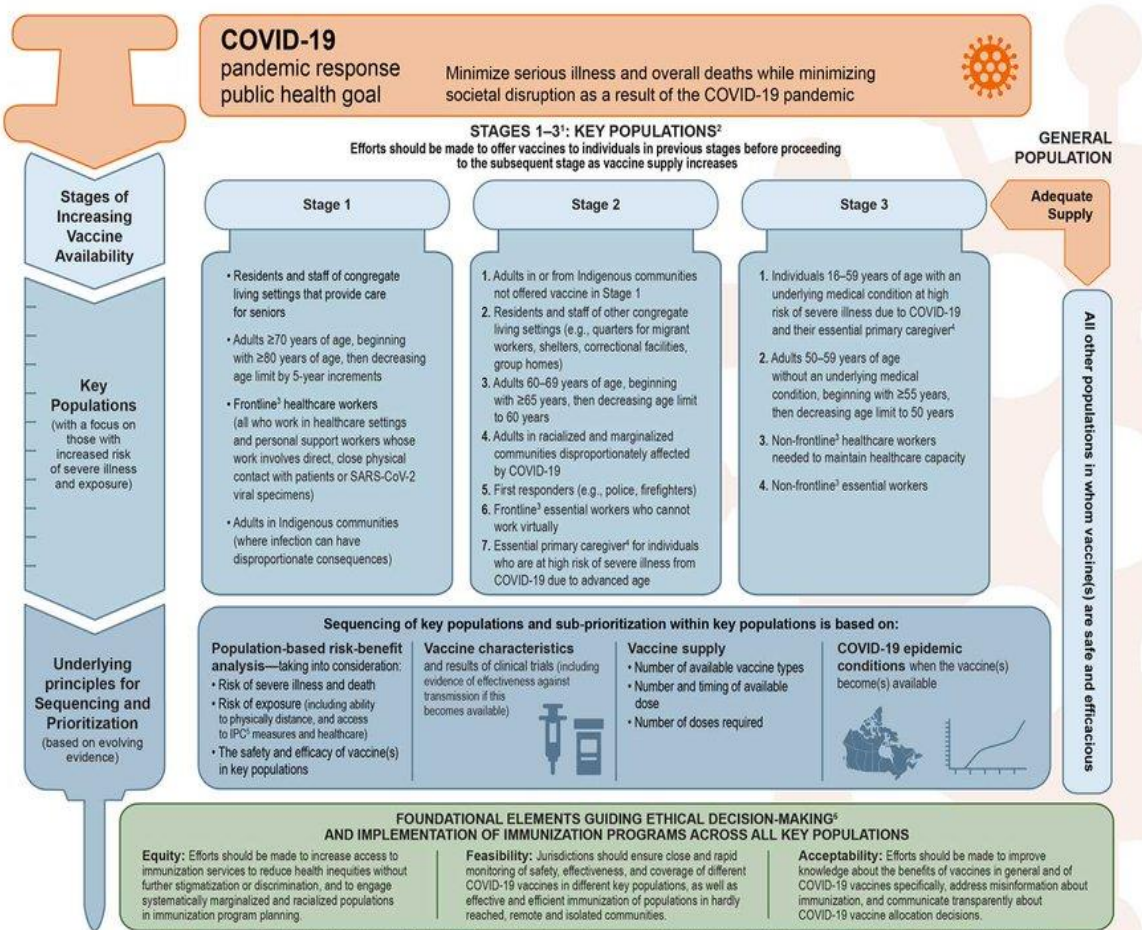
Community Living Burlington COVID-19 Visitors Information and Immunization Facts

We want to thank all of our families, employees and the people we support. It is almost a year that we have been in this Pandemic and with all of the hurdles we have had to jump, things are moving forward and there is finally some light at the end of the tunnel with the vaccines.

Thank you for your support and patience. Together we will get through this Pandemic and hopefully get back to some normalcy in our lives.

Thank you,

Judy Pryde
Executive Director



1 Key populations in Stages 2 and 3, recommended since the previous NACI guidance on Stage 1, are listed in order of priority. Examples listed within key populations are suggestions that are not listed in order of priority.
2 Key populations are not mutually exclusive and may overlap. Sequencing and sub-prioritization may differ between jurisdictions based on differences in local epidemiology and logistical contexts.
3 Having direct close physical contact with the public.
4 The adult primarily responsible for taking care of a family member or loved one who cannot care for themselves.
5 IPC = infection prevention and control measures.
6 Based on the systematic assessment of ethics, equity, feasibility and acceptability using an evidence-informed framework, available at: <https://isa.org/10.1016/j.vaccine.2020.05.051>