



Splashback Installation Guide

Tools Required

Safety Glasses & Earmuffs
Hammer or Rivet Gun
Wall Board Nails or Sealed Pop Rivets
Liquid Nails/Silicon—1 tube per panel
Tin Snips—straight and curved
Stanley knife with used blade
Angle Grinder with aluminium cutting disc
Metal Hole Saw or Drill and Tin Snips for cutting out power outlet holes
Soft cloth
Silicone to match panel colour or a clear if in doubt

ALWAYS CONSULT YOUR COUNCIL & RELEVANT LICENCED TRADESPEOPLE PRIOR TO INSTALLING PRESSED TIN PANELS® PRODUCTS. CAUTION SHOULD BE USED AT ALL TIMES AS METAL EDGES ARE VERY SHARP.

NOTES: Powder Coating is the recommended finish for use of the panels in a splashback area. **Powder coating ensures protection of the metal against fats, oils and moisture.** For more information on this please contact us directly or your store of purchase. **We suggest the use of a compressed cement sheeting or fire-retardant Gyprock as the substrate behind the cooktop area,** this should stop heat transfer.

All instructions are given as a guide only. We hold no responsibility for incorrect installation or use of our products.

We do not recommend mixing our products with other pressed metal products on the market. There are variances in the sizing of each product which will make pattern matching difficult. Surface scratches may be present, painting recommended. If you have any questions, please feel free to contact the store of purchase or Pressed Tin Panels® directly.

STICKER INFO: Stickers are on the backs of the products, where possible have all the panels running in the same way ie: Stickers all at the bottom right hand side when installing.

Watch the full installation video:
<https://www.youtube.com/watch?v=qhhQZtz04mc>

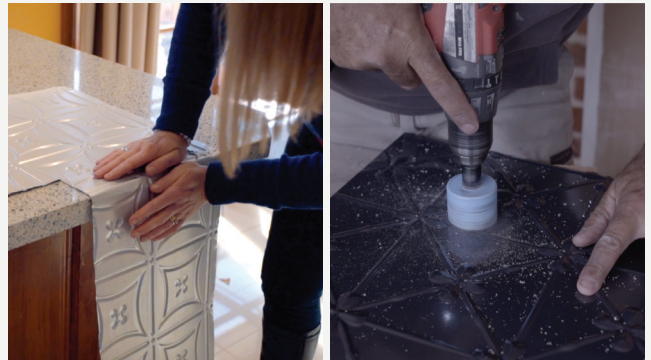
Panel Coating Information:
<https://pressedtinpanels.com/wp-content/uploads/2018/10/Panel-Coating-Information.pdf>

Please Note: Pre-Cut Panels

All panels cut by us use our pattern matching knowledge and may not necessarily be cut to your requested sizes [all joins need to overlap, not butt-up, therefore each section may be slightly bigger than requested upon inspection]. This ensures as smooth an install as possible. Some trimming may be necessary on site as occasions do arise where an 'out of square' wall has not been noticed or trimming or supplied measurements have been slightly out. This is easily done with a pair of tin snips or an aluminium cutting disc in an angle grinder. Cleaning: To retain the finish on your Powder Coated Splashback, do not use any abrasive cleaners or scourers. The best option is hot soapy water or hot water and Metho or Eucalyptus oil with a Micro-fibre cloth. Simply wipe over the area regularly and it will look great for years to come.

Installation

1. Have an Electrician disconnect power points. Ensure the wall surface is smooth and clean from any loose debris and dust.
2. Measure the area and cut panels to suit if they haven't been pre-cut, remembering that all joins must overlap to ensure the continuous pattern, overlaps running away from the eye achieves the best result. We recommend starting and centering pattern at the cooktop area so a joint is avoided in this area.
3. Fold corners as opposed to joining in the corner as a join is more difficult to clean. **To fold a panel:** Measure and mark then on reverse side, 'score' with a used Stanley knife and over a straight edge like a tabletop, manually push panel down along the scored line until the desired fold has been achieved. Mark and **cut out holes** for power outlets.





Splashback Installation Guide (cont.)



4. You are now ready to fix the panels to the splashback area. Prepare Adhesive tubes and have the Hammer and Nails OR the Pop Rivet Gun and Rivets ready. Decide which will be the first panel to be installed, cover the back of the panel with adhesive and place the panel on the wall into position. Rub over with soft cloth to ensure a bond between the glue, panel and wall. Continue along the wall with the next panel remembering to overlap the join away from the eye as you walk into the room. Once in correct place, rub over the panel with the soft cloth, give the other panels a rub over as well while you're at it. You may find you need a nail or rivet along the join or in the corners ensuring to leave any edges that require a border or trim free.



5. If using a Pressed Metal Border or Tile Edge this can be put into place now before the adhesive dries, once cut to length they simply slide in behind the panel creating a finished edge. Use Liquid Nails and a Nail or Rivet to attach the border or tile edge. Mitre or scribe the corners or if using a pressed metal border use the available mitre rosette.
6. Once all your panels are in place, the very last steps are to run a bead of silicone along the bench top to panel edge to ensure a watertight seal along the wall, have your electrician re-connect your power points, touch up any nail or rivet heads with matching paint and some general housekeeping and you are done.

