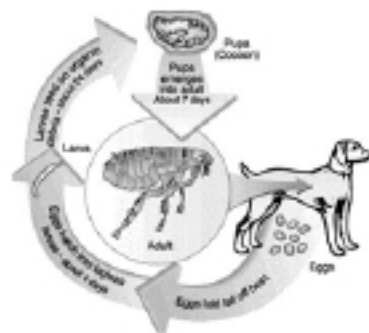




**OPTIMUM
PEST CONTROL**
PASSIONATE ABOUT SERVICE

IMPORTANT INFORMATION TO READ ABOUT YOUR OPTIMUM PEST CONTROL TREATMENT

We have carried out Pest Control for Fleas



Fleas in houses are usually linked with a pet or a visiting cat or dog.

Flea problems often occur when the host animal has been absent for a period of time, such as when the family goes on vacation, taking or boarding the family pet.

Cat and dog fleas periodically jump on and off the host. When the host is removed for a period of time, they are left without food.

Hungry adult fleas often attack on the first warm-blooded animal that comes in the door, often biting people around the ankles.

PLEASE NOTE:

- Sometimes small black fleas are seen AFTER the treatment, this does NOT mean the flea treatments is not working
- This is because the pupae (cocoon) are resistant to chemicals.
- Fleas continue to hatch because insecticides cannot penetrate the flea pupa case.
- DONT WORRY, when the newly hatched flea comes into contact with the treatment left in the carpet the flea will die.

PLEASE BE PATIENT - THIS IS NORMAL.

HELPFUL TIPS AFTER OPTIMUM PEST CONTROL HAS CARRIED OUT A FLEA TREATMENT:

- Treat your pet with a flea treatment at the same time as we do our flea treatment. You will get better results this way.
- Don't forget that as the pupa (egg sacs) are VERY resistant to chemicals, fleas continue to hatch, but once they hatch they will die in the treatment residue in the carpet.
- Movement causes flea eggs to hatch – walk around the property (this is especially important if it is vacant and people are moving in) with white socks tucked into trouser legs. You will see the baby fleas as they hatch – they are visible to the naked eye, they will pick up the residual treatment left in the carpet and die.
- If you remove the pet, flea problems may appear to be worse – as you become the only potential host.
- Please DO NOT vacuum or mop for AT LEAST 14 days after treatment.
- If you are clearing the carpets these should be done BEFORE a flea treatment is carried out, not after.
- BE PATIENT. You may still see newly hatched fleas, sometimes for several weeks as they hatch at different times. This is normal and they will die from the chemicals in your carpet/flooring.
- If you are still experiencing live fleas after 14 days give us a call and we will come and do a free service call.
- As we are working with the flea lifecycle, we need to wait until 14 days AFTER treatment.

FOR A SUCCESSFUL TREATMENT IT IS REALLY IMPORTANT THAT YOU FOLLOW THESE STEPS.

CALL US BACK AFTER 2 WEEKS IF YOU ARE STILL SEEING FLEAS, ON 07 5520 7171.

PASSIONATE ABOUT SERVICE

PO Box 359 West Burleigh Qld 4219

p | (07) 5520 7171 e | admin@optimumpest.com.au w | www.optimumpest.com.au
FULLY LICENCED & INSURED QBSA 1252837 ABN 634 13 13 13 04