

HEARTLAND EST 2014
— E S T A T E —

Home & Land
\$542,980 Fixed Price

Lot 1027

Warburn Crescent Heartland Estate
Gledswood Hills, NSW, 2557

Design Ella Fitzgerald 200

Approx. total house area: 200m²

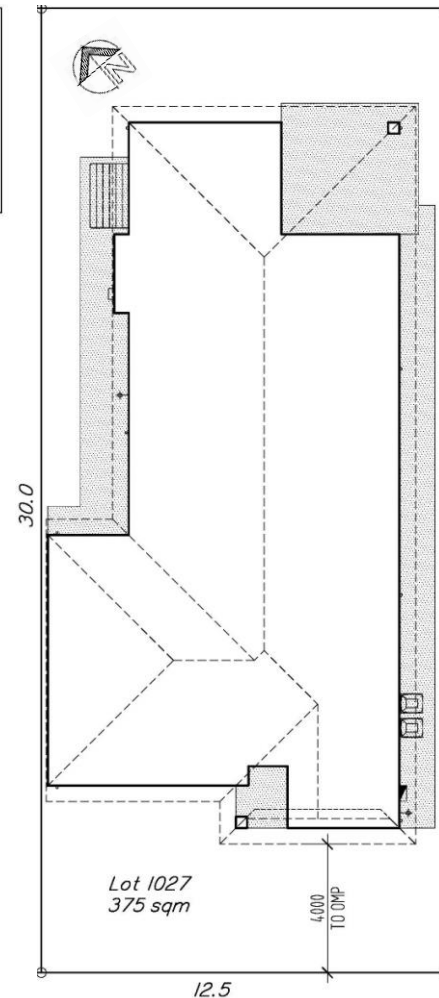
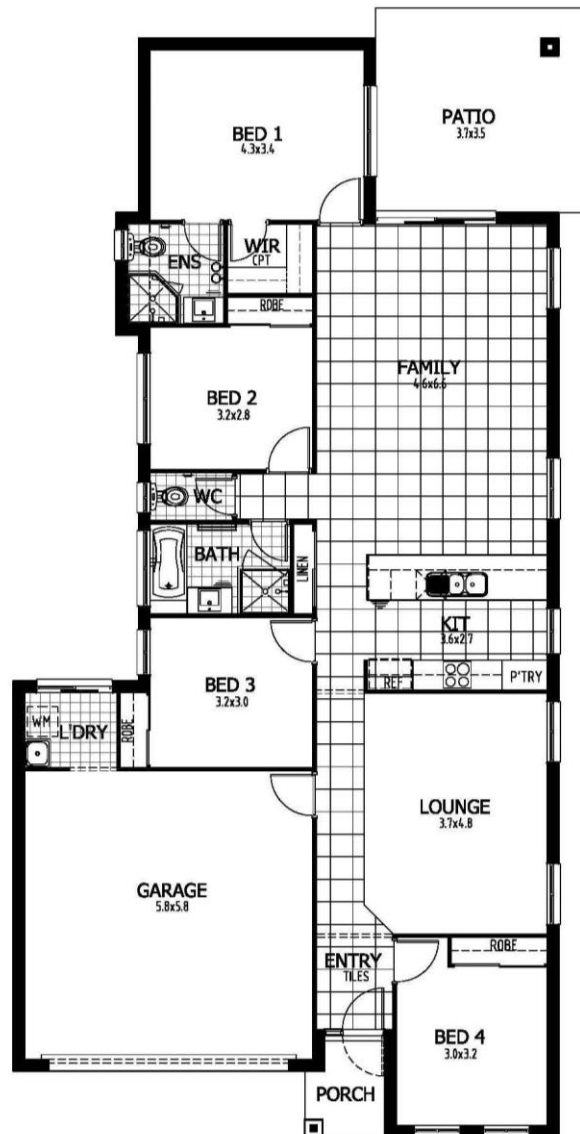
Total land area: 375m²

House price: **\$273,980**

Land Price: **\$269,000**

QUALITY INCLUSIONS ...

- Fixed site costs, no surprises
- Carpeted and tiled throughout
- 2590mm nominal ceiling height
- Smart stone bench top to kitchen, bathroom & ensuite
- Quality stainless steel appliances
- Superior fittings and fixtures
- Holland blinds throughout
- Fly screens and security screens to external doors
- Mirrored robe doors
- Wall mounted vanity units
- Interior LED lighting
- Outdoor patio area under main roof
- Turfed and Landscaped
- Driveway and pathways
- Fully fenced
- Clothesline and letterbox
- Preselected colours; Interior decorators have created stylish interiors



WARBURN CRESCENT



Tribeca Homes PTY LTD reserves the right to alter & change home designs without notice prior to contract. All images are for illustration purposes only & do not represent the actual home colour selections. All sizes are approximate. The land dimensions are intended to be an accurate interpretation of information provided by the land vendor, however the Buyer should make their own enquiries on the land dimensions, easements, covenants, etc, including disclosure plan & associated details within the land contract. The Buyer should make their own enquiries as to the suitability of this property for their personal investment & the anticipated returns as Tribeca Homes makes no representation in this regard. Building licence number: 219619C ABN: 84129932243