

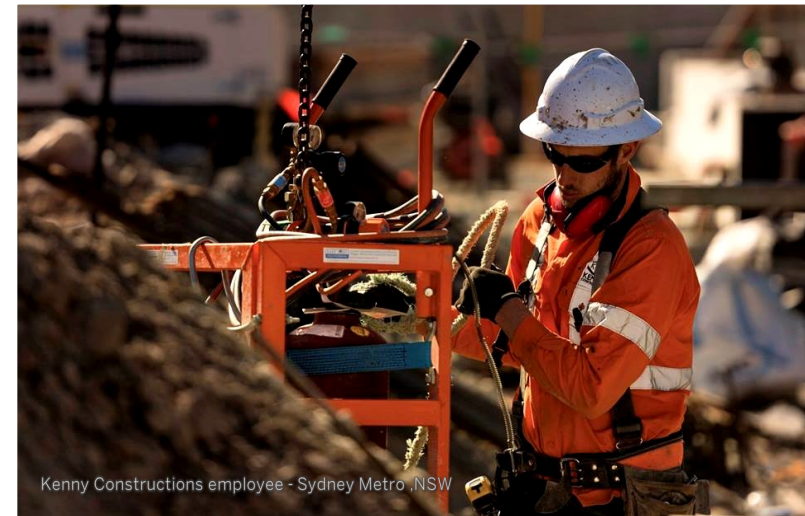


► www.kennyconstructions.com.au
Sydney | Brisbane | Melbourne | Adelaide
CIVIL ► COMMERCIAL ► RESIDENTIAL



A dynamic mid-tier contractor with a proven track record of offering strategic solutions to projects of high complexity. We specialise in working on deadline driven projects of high commercial value. Our reputation has been built on the success of the projects we have been integral in constructing. Through this we have developed extensive experience in delivering unique, complex projects.

OUR ACCREDITATIONS



Kenny Constructions employee - Sydney Metro, NSW



Kenny Constructions Yard - NSW



Kenny Constructions employee - WestConnex, NSW

CIVIL CONSTRUCTION SERVICES

We offer a full range of civil works services in structures, precast installation, formwork, scaffold and architectural panelling and we own an extensive range of plant, machinery and equipment which benefits site efficiency

BUILDING CONSTRUCTION SERVICES

We provide an extensive range of building sector services including formwork, concreting, scaffold, cladding, fit-out & joinery to the tier one building companies. We ensure all projects are well resourced so that our clients requirements are met and the project is delivered on time.

RESOURCES CONSTRUCTION SERVICES

Having worked with many of the world's leading mining and resource companies on major projects, we understand the challenges of remote area projects. Based on our experience and our large work force we are able to offer a full range of services to these areas and are able to dispatch a sizable workforce proficiently.

EXPERTISE

FORMWORK:	Supply, Install & Strip
CONCRETE:	Place & Finish
STEEL FIXING:	Pre-Fab, Tie Insitu, Erection
PRECAST:	Stand, Grout & Fix
FIT-OUT:	Partitions & Cladding
ACCESS:	Scaffold Erection & Dismantle

PERSONNEL

- Project Managers
- Engineers
- OHS Manager
- Formworkers
- Concreters
- Steel Fixers
- Dogmen & Riggers
- Welders
- Apprentices
- Estimators
- Foremen
- Supervisors
- Plasterers
- Carpenters
- Cladders
- Plumbers
- Electricians
- Indigenous People



With a proven track record of delivery, we are continually contracted on some of the largest civil infrastructure jobs in Australia.



Our reputation has been built on the success of the projects we have been integral in helping to build. As direct result of this we have developed lasting client relationships throughout the civil, construction and mining industries.



DRAGADOS



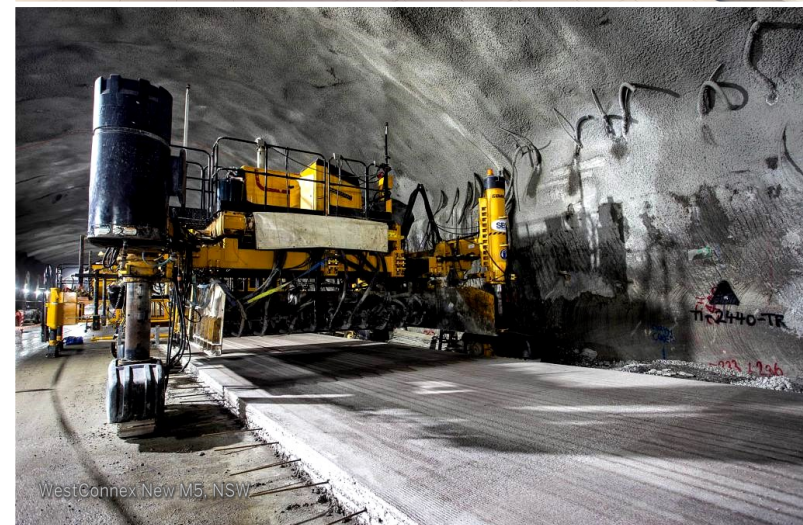
Santos



Airport Link, QLD



Eastern Busway, QLD



WestConnex New M5, NSW

PAST PROJECTS

WestConnex Stage 1, NSW - M4E CPB Samsung John Holland JV

Cost: \$3.8B | Concrete Structures, Precast Install, Retaining Walls, Concrete Pavements, Architectural Panelling & M&E Fit-Out
Year: 2018-19

Sydney Metro Stage 1, NSW - CPB John Holland JV

Cost: \$3.7B | **Cherrybrook Station Structures**
Year: 2017-18 | Station Structures, Precast Install, Retaining Walls & Concrete Pavements
Epping & Cheltenham Service Buildings
Station Structures, Precast Install, Retaining Walls & Concrete Pavements
Showground Station Structures
Station Structures, Precast Install, Retaining Walls & Concrete Pavements
Castle Hill Station Structures
Station Structures, Precast Install, Retaining Walls & Concrete Pavements
Kellyville, Cudgegong, Rouse Hill
Stone & Concrete Paving, Crossovers & Medians

WestConnex Stage 1A M4 Widening, NSW - Rizzani Leighton JV

Cost: \$3.8B | Bridge Structures, Stormwater, Retaining Walls, Concrete Pavement, Precast Install, Architectural Panelling
Year: 2015-16

Schofields Road Stage 2, NSW— OHL York JV

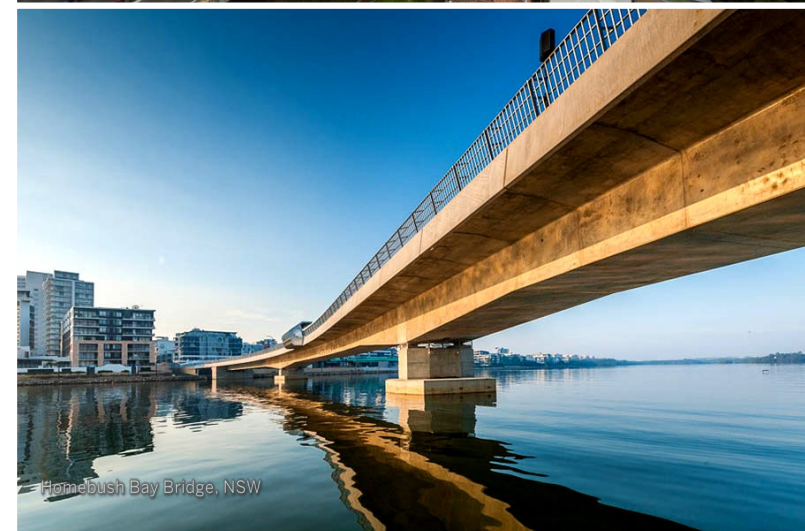
Cost: \$135M | Bridge Piers, Headstocks, Precast Beams & Culverts
Year: 2014-16

Homebush Bay Bridge, NSW—VSL Brady JV

Cost: \$63M | Bridge Piers, Headstocks, Precast Beams & Concrete Barriers
Year: 2014-15

Moreton Bay Rail Link, QLD - Thiess

Cost: \$1B | Bridge Structures, Precast & Concrete Pavement Works
Year: 2014-15



PAST PROJECTS

Sydney Metro Viaduct, NSW - ISJV

Cost: \$340M | Skytrain Bridge Structures 130m Span, Retaining Walls, Precast,
Year: 2013-15 | Drainage Works, Concrete Pavements & Acoustic Panelling

Sydney Metro Bella Vista & Showground, NSW - CPBJHD

Cost: \$1.15B | TBM Launch Structures & Precast Facility Structures
Year: 2013-15

Urban Superway, SA - Urban Super JV

Cost: \$842M | Bridge Piers, Headstocks, Bridge Deck Slabs & Architectural Panelling
Year: 2011-14

Blackwater Creek Power Station, QLD - York Civil

Cost: \$50M | Spill Way Structures
Year: 2014

Tintenbar to Ewingsdale, NSW - Lendlease

Cost: \$862M | Bridge Structures, Tunnel Linings & Architectural Cladding
Year: 2012-13

Australia Pacific LNG, QLD - Ostwald Bros.

Cost: \$27B | Substructure for Water Management, Ponds & Facilities
Year: 2013-14

Santos GLNG, QLD - McConnell Dowell, Clough Downer & WDS

Cost: \$16B | Civil Ground Works, Structures, Building Works & Subsurface Pits
Year: 2012-13

Port of Brisbane, QLD - Lendlease

Cost: \$342M | Concrete Rail Beams & Container Beams
Year: 2012-13

Mains & Kessels Rd, QLD - Lendlease

Cost: \$300M | Bridge Structures, Retaining Walls & Concrete Pavements
Year: 2012



PAST PROJECTS

Princess Highway, NSW - Fulton Hogan

Cost: \$329M | Retaining Walls, Bridge Structures & Concrete Pavements
Year: 2012

Airport Link, QLD - Thiess John Holland JV

Cost: \$4.8B | Tunnel Cross Passages, Suspended Smoke Duct Slab, Tunnel Linings,
Year: 2010-12 | Landscape Structures & Architectural Panelling

Legacy Way, QLD - Transcity JV

Cost: \$1.5B | Tunnel Cross Passages, Tunnel Works, Smoke Duct Slab, Architectural
Year: 2012 | Panelling & Cladding

South Walker Creek, QLD - York Civil

Cost: \$27M | Coal Preparation Plant Concrete Structures
Year: 2011-12

CoalConnect, QLD - Leighton Contractors

Cost: \$1.1B | Retaining Walls, Bridge Structures & Other Ancillary Works
Year: 2012

Eastern Busway, QLD - Leighton Contractors

Cost: \$1.3B | Retaining Walls, Headstocks, Suspended Slabs, Platform Substructure
Year: 2009-11 | & Platform Slabs

Clem 7, QLD - Leighton Boulderstone Bilfinger JV

Cost: \$3.2B | Tunnel Cross Passages, Suspended Smoke Duct Slab, Tunnel Linings,
Year: 2007-10 | Landscape Structures & Architectural Panelling

Springfield Lakes Low Level Dam, QLD - McIlwain Civil

Cost: \$14.7M | Spillway Slabs, Retaining Walls & Bridge Abutments
Year: 2007-09

Gateway Upgrade, QLD - Lendlease

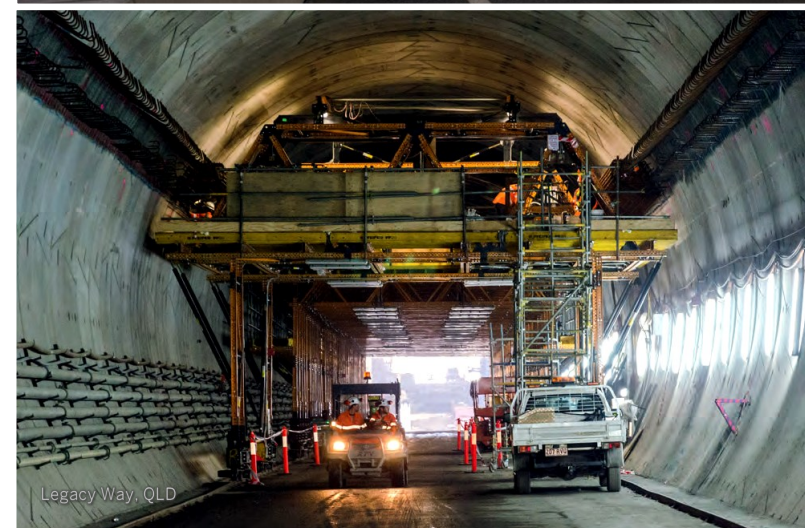
Cost: \$1.4B | Concrete Structures, Retaining Walls, Abutments, Headstocks, Piers &
Year: 2007-09 | Jersey Barriers



Gateway Bridge, QLD



Airport Link, QLD



Legacy Way, QLD

PAST PROJECTS

Bulimba Creek Trunk Sewer Stage 1A, QLD - John Holland

Cost: \$40M | Concrete Structures, Tanks & Drainage Works
Year: 2007-09

Westlink M7, NSW - Abigroup Leighton JV

Cost: \$1.8B | Concrete Pavements & Structures
Year: 2003-05

Warragamba Dam, NSW - Lendlease

Cost: \$27.4M | Concrete Pavement & Water Containment Structures
Year: 2007

Lane Cove Tunnel, NSW - Thiess John Holland JV

Cost: \$1.1B | Concrete Pavements, Structures & Architectural Cladding
Year: 2007

Cross City Tunnel, NSW - Lendlease Bilfinger Berger JV

Cost: \$1B | Concrete Structures, Concrete Pavements & Retaining Walls
Year: 2003-05

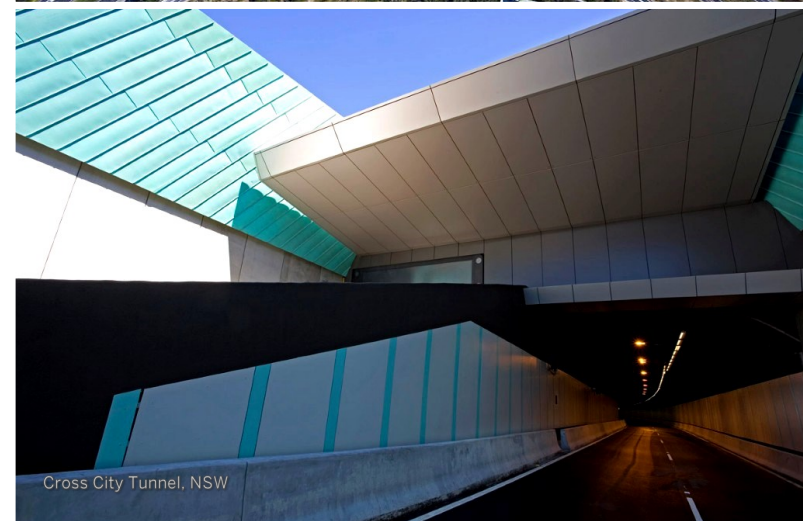
North West T-way, NSW - Leighton Contractors

Cost: \$524M | Concrete Pavement & Structures
Year: 2003

M5 Motorway, NSW - Lendlease Bilfinger Berger JV

Cost: \$800M | Concrete Pavements & Structures
Year: 2001-02

*Excludes older and smaller projects not listed for formatting purposes



CURRENT PROJECTS

WestConnex Stage 2, New M5 - CPB Dragados Samsung JV

Cost: \$4.34B

Year: 2017-18

Motorway Operations Complex 1

Precast Install & Scaffold

Motorway Operations Complex 2 & 3

Concrete Structures, Precast Install, Concrete Pavements & Scaffold

Kingsgrove M5 North

Bridge Structures, Precast, Retaining Walls, Pavements & Tunnel Linings

NorthConnex, NSW - Lendlease Bouygues JV

Cost: \$3B

Year: 2018-19

Architectural Panelling

Sydney Metro Stage 2, Central Phase 1A - Laing O'Rourke

Cost: \$955M

Year: 2018-19

Station Structures Package

Sydney Metro Stage 2, City Stations - CPB John Holland Ghella JV

Cost: \$2.81B

Year: 2019-22

Martin Place Station Cavern

FRP Cavern Lining & Adits and Scaffolding

Victoria Cross Station

FRP Cavern Lining & Adits and Scaffolding

Pitt Street Station

FRP Cavern Lining & Adits and Scaffolding

Chatswood Station

Cut & Cover Dive Structure, Cross Passages , Precast Install, Scaffolding & Fit-Out



