



Hipac

Dependable healthcare equipment;
maintained to exacting standards

> Patient Positioning Solutions



Operating tables
and accessories



We're here for life.

Hipac – making it work for you

A quarter of a century ago the concept of “making it work for you” germinated and developed resulting in the matured Hipac of today that stands tall amongst leading healthcare product suppliers.

From the intensity, pressure and technological environment of the operating theatre to the relaxed and caring atmosphere of the mental health facility, we have the solutions and the experience to make it work for you.

We understand the demands placed upon healthcare department managers, medical professionals and their assistants.

We understand that equipment needs to work on demand, on time, and every time.

We understand that here in Australia specialised healthcare equipment is mostly best sourced internationally where state of the art technology and generous manufacturing quantities can produce reliable and safe products.

We also understand that international product offering doesn't always suit local practice.

That's why we operate our own manufacturing facility, backed by a premium after sales national service network, to provide the connection that allows us to deliver a solution that does just that – works for you.

It is likely that you have already experienced the Hipac advantage. If not we look forward to exploring how we can best make it work for you.

Mission

**We're here for life.
We're here to preserve life,
to protect life and to promote life.
We're here for others and we're
here for good.**

Vision

A vibrant enthusiastic team of dynamic individuals possessing a genuine interest in the needs of those surrounding them, whose attitude and actions benefit not only our clients and their patients but reach out to touch humanity.

Our staff find work rewarding and enjoyable and our customers find engagement with them fulfilling. Stakeholders are satisfied and supportive.

A carefully selected portfolio of solid reliable products is sourced from a long lineup of manufacturers worldwide seeking well supported representation throughout the country.

Growth is sustained by the energy of a service division unequalled for its reliability, dependability and efficiency. It will be capable of a four hour response time anywhere on this vast continent.

Relationships formed will endure.

Guiding Principles

Integrity

Open, honest and loyal in every sphere and relationship.

Selflessness

Put the needs of others ahead of my own.

Consideration

Possess a caring and considerate disposition.

Courtesy

A smile, a kind word, a greeting costs nothing but is priceless.

Generosity

Display a spirit of generosity, kindness and compassion.

Orderliness

Maintain tidy and safe facilities, work areas and practices.

Effectiveness

Do it once, do it right and do it in the least amount of time. Be punctual.

Communication

Keep customers, suppliers and fellow workers informed.

Recordkeeping

Maintain accurate records for a better tomorrow. Be accountable.

Innovation

Do it smarter, better, quicker. Think outside the box.

Action

See a need do something about it....now.

> Contents

Side Rail Clamps

PAGE 5-9

Body Supports

PAGE 10-17

Leg Supports

PAGE 18-22

Head Supports

PAGE 23-24

Arm Supports

PAGE 25-28

Velcro® Products

PAGE 29

Orthopaedic Supports

PAGE 30-36

Bariatric Supports

PAGE 37-38

Anaesthetic Supports

PAGE 39

Restraints

PAGE 40

Replacement Mattresses

PAGE 41-46

General Accessories

PAGE 47-49

Gel Pressure Care Products

PAGE 50-57

Product Index

PAGE 58-59


General Information

PAGE 60

A leading Australian supplier of reliable healthcare products since 1986.



We're here for life.



We understand
that equipment
needs to work on
demand, on time,
and every time.

> Side Rail Clamps Size A

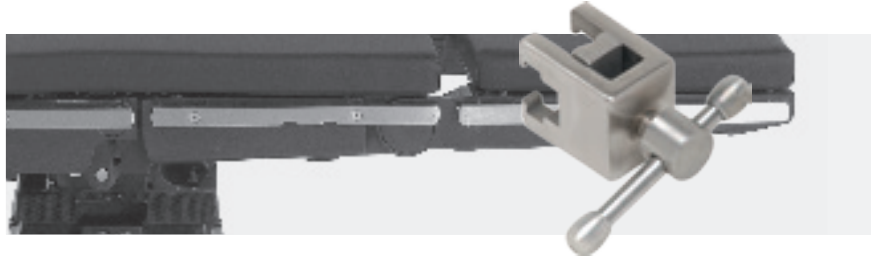
Approximate size of rail 28mm x 10mm. To suit American Side Rails: E.g. Skytron, Steris.

MULTI CLAMP

- Stainless steel construction.
- Accepts sizes 11 to 17 round post.
- Accepts size 34 rectangular post.

CODE:

113090



UNIVERSAL ROUND BAR CLAMP

- Stainless steel construction.
- Accepts sizes 11 to 16 round post.
- Direct on where slots are fitted in side rail.

CODE:

113087



RADIAL BI CLAMP

- Stainless steel construction.
- Accepts size 34 rectangular post.
- Accepts sizes 11 to 16 round post.
- Direct on where slots are fitted in side rail.

CODE:

113095



ROTARY CLAMP

- Stainless steel construction.
- Accepts sizes 15 or 16 round post.
- Direct on where slots are fitted in side rail.

CODE: SIZE:

113092 15

113093 16



SIDE RAIL EXTENSION CLAMP

- Stainless steel construction.
- Extends side rail by 250mm.

CODE: SIZE:

113097 A Rail

117002 B Rail

117003 D Rail

117004 E Rail



CLARK SOCKET

- Stainless steel construction.
- Accepts sizes 15 & 16 round post.
- Direct on where slots are fitted in side rail.

CODE:

113094



ROTARY SURE CLAMP

- Aluminium construction.
- Accepts size 16 round post.
- Direct on table attachment.

CODE:

113098



TRI CLAMP

- Aluminium construction.
- Accepts up to size 17 round post.
- Accepts size 33 rectangular post.
- Direct on table attachment.

CODE:

113096

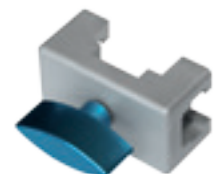


STIRRUP CLAMP

- Aluminium construction.
- Accepts size 33 rectangular post.
- To suit most brands of gas assisted stirrups.
- Direct on where slots are fitted in side rail.

CODE:

113091



ROUND BAR CLAMP

- Stainless steel construction.
- Accepts size 16 round post.
- Direct on where slots are fitted in side rail.

CODE:

113086



RECTANGULAR BAR CLAMP

- Stainless steel construction.
- Accepts sizes 31 or 33 rectangular post.
- Direct on where slots are fitted in side rail.

CODE: SIZE:

113088 31

113089 33



> Side Rail Clamps Size B

Approximate size of rail 32mm x 6mm. To suit British Side Rails: E.g. Eschmann.

MULTI CLAMP

- Stainless steel construction.
- Accepts sizes 11 to 17 round post.
- Accepts size 34 rectangular post.

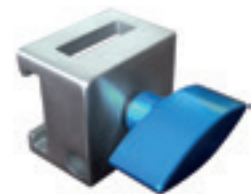
CODE:
113101



RECTANGULAR BAR CLAMP

- Stainless steel construction.
- Accepts size 31 rectangular post.

CODE:
113100



ROUND BAR CLAMP

- Stainless steel construction.
- Accepts size 16 round post.

CODE:
113099



RADIAL BI CLAMP

- Stainless steel construction.
- Accepts sizes 11 to 16 round post.
- Accepts size 34 rectangular post.

CODE:
113105



ROTARY CLAMP

- Stainless steel construction.
- Accepts size 15 or 16 round post.

CODE: SIZE:
113103 15
113104 16



SIDE RAIL EXTENSION CLAMP

- Stainless steel construction.
- Extends side rail by 250mm.

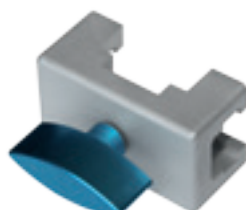
CODE: SIZE:
113106 B Rail
117005 A Rail
117006 D Rail
117007 E Rail



STIRRUP CLAMP

- Aluminium construction.
- Accepts size 33 rectangular post.
- To suit most brands of gas assisted stirrups.

CODE:
113102



> Side Rail Clamps Size D

Approximate size of rail 38mm x 6mm. E.g. Denyer.

MULTI CLAMP

- Stainless steel construction.
- Accepts sizes 11 to 17 round post.
- Accepts size 34 rectangular post.

CODE:

113110



ROTARY CLAMP

- Stainless steel construction.
- Accepts sizes 15 or 16 round post.

CODE: SIZE:

113112 15

113113 16



STIRRUP CLAMP

- Stainless steel construction.
- Accepts size 33 rectangular post.
- To suit most brands of gas assisted stirrups

CODE:

113111



RADIAL BI CLAMP

- Stainless steel construction.
- Accepts sizes 11 to 16 round post.
- Accepts size 34 rectangular post.

CODE:

113114



SIDE RAIL EXTENSION CLAMP

- Stainless steel construction.
- Extends side rail by 250mm.

CODE: SIZE:

113115 D Rail

117008 B Rail

114674 A Rail

117009 E Rail



UNSURE OF SIZES? REFER TO OUR EZI GAUGE AT THE BACK OF THIS CATALOGUE.

> Side Rail Clamps Size E

Approximate size of rail 25mm x 10mm. To suit European Side Rails. E.g. Maquet

MULTI CLAMP

- Stainless steel construction.
- Accepts sizes 11 to 17 round post.
- Accepts size 34 rectangular post.

CODE:

113118



ROTARY CLAMP

- Stainless steel construction.
- Accepts sizes 15 or 16 round post.

CODE: SIZE:

113120 15

113121 16

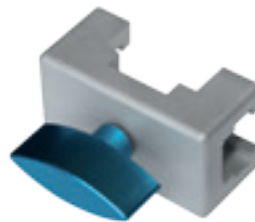


STIRRUP CLAMP

- Aluminium construction.
- Accepts size 33 rectangular post.
- To suit most brands of gas assisted stirrups.

CODE:

113119



RADIAL BI CLAMP

- Stainless steel construction.
- Accepts sizes 11 to 16 round post.
- Accepts size 34 rectangular post.

CODE:

113122



ROUND BAR CLAMP

- Stainless steel construction.
- Accepts size 16 round post.

CODE:

113117



SIDE RAIL EXTENSION CLAMP

- Stainless steel construction.
- Extends side rail by 250mm.

CODE: SIZE:

113123 E Rail

117010 A Rail

117011 B Rail

117012 D Rail



> Specialty Clamps

UNIVERSAL BAR CLAMP

- Accepts most brands of gas assisted stirrups.
- Accepts size 11-17 round post.
- Accepts size 33 and 34 rectangular post.
- Lightweight aluminium construction.

CODE: **SIZE:**

115167 A Rail

115699 B Rail

115700 D Rail

115701 E Rail



TRACTION CLAMP

- For use on Hipac, Amsco Steris and 777 Orthopaedic Traction Frames.
- Stainless steel construction.
- Accepts size 16 round post.
- Accepts size 35 rectangular post.

CODE:

112096



UNIVERSAL ROTARY CLAMP

- 'Direct on' rail attachment.
- Stainless steel construction.
- Available to suit A, B and E size table rails.
- Accepts size 17 round post.

CODE:

113662



CLAMP ON RAIL

To suit carbon fibre imaging board.

CODE: **SIZE:**

113563 A Rail

116916 B Rail

116917 D Rail

116918 E Rail



> Body Supports

CURVED LATERAL SUPPORT

- Stainless steel & aluminium construction.
- Adjusts vertically & horizontally.
- Requires one rectangular bar clamp for fitment.
- Requires pad (112164).

CODE: **SIZE:**

112160	31
112161	33
112163	34
116963	16
112164	Pad



CURVED SUPPORT

- Lightweight, stainless steel and aluminium construction.
- Requires one rectangular bar clamp for fitment.
- Requires pad (112164).

CODE: **SIZE:**

112165	31
112166	33
112167	34
112164	Pad



STRAIGHT LATERAL SUPPORT

- All stainless steel construction.
- Adjustable vertically and horizontally.
- Requires one multiclamp for fitment.
- Requires pad (112172).

CODE: **SIZE:**

112171	34
112172	Pad



RIGHT ANGLE LATERAL SUPPORT

- Aluminium construction.
- Slips under table mattress.
- Requires pad (112228).

CODE:

112227
112228 Pad



> Body Supports

SHOULDER RESTS (PAIR)

- Sold in pairs.
- Stainless steel and aluminium construction.
- Adjusts both vertically and horizontally.
- Requires two rectangular bar clamps.
- Requires pads (112213).

CODE:	SIZE:
112210	31
117015	33
112211	34
112213	Pad (Pair)



TUBULAR BODY SUPPORT

- Stainless steel construction.
- Easy vertical and horizontal adjustment.
- Requires one round post clamp for fitment.
- Requires pad (112170).

CODE:	SIZE:
112169	16
112170	Pad



TUBULAR SUPPORT

- Stainless steel construction.
- Simple vertical and horizontal adjustment.
- Requires one multiclasp for fitment.
- Requires pad (112170).

CODE:	SIZE:
112175	34
112170	Pad



VERTICAL SUPPORT

- Stainless steel construction.
- Requires one round post clamp for fitment.
- Requires pad (111765).

CODE:	SIZE:
112178	16
111765	Pad



> Body Supports

LATERAL HIP POSITIONER

- Full stainless steel construction.
- Fully and easily adjustable both vertically and horizontally.
- Requires two round post clamps for mounting.
- Direct on pads supplied as standard.

CODE: SIZE:

112215	16 (Includes pads)
112216	Large Pad (Velcro® - Removable)
112217	Small Pad (Velcro® - Removable)
112662	Positioning Handle End Stop
113585	Large Pad (Recoverable*)
113586	Small Pad (Recoverable*)

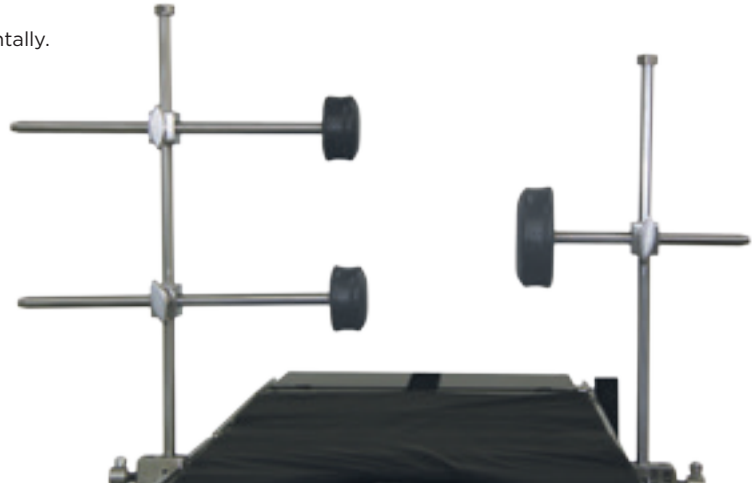


113585



112662

*Lateral bars must be returned to Hipac for fitment.



112215

SQUARE LATERAL HIP PADS

- Vinyl covered foam.
- All seams chemically sealed.
- Dimensions: 90mm x 85mm x 45mm.
- Attach with Velcro®.

CODE:

113598 (Set of 2)



LATERAL BRACE SET

- Stainless steel construction.
- Swivels for maximum positioning.
- Each positioner secures separately.
- Requires three round post clamps.
- Requires pad set (114081).

CODE: SIZE:

112180	16
114081	Pad Set



DELUXE LATERAL POSITIONER SET

- Stainless steel and aluminium construction.
- Adjustable vertically, horizontally and diagonally for optimum positioning.
- Requires three round post clamps.
- Requires pad set (114082).

CODE: SIZE:

112218	16
114082	Pad Set



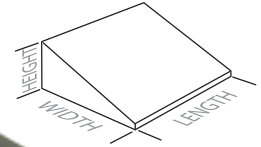
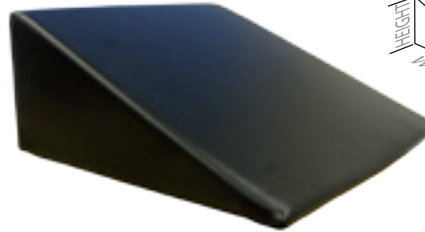
> Body Supports

WEDGE

- Vinyl covered foam.
- All seams chemically sealed.

CODE: **SIZE:**

112222	300mm(W) x 100mm(H) x 300mm(L)
112223	340mm(W) x 130mm(H) x 350mm(L)
112224	375mm(W) x 170mm(H) x 375mm(L)
112225	560mm(W) x 425mm(H) x 380mm(L)

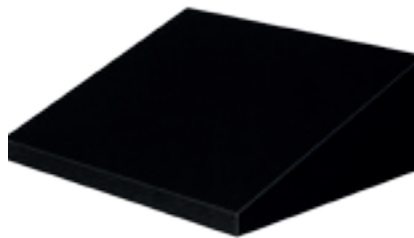


MATERNITY WEDGE

- Vinyl covered foam.
- Adjusts both vertically and horizontally.
- All seams chemically sealed.

CODE: **SIZE:**

112226	300mm(W) x 130mm(H) x 380mm(L)
--------	--------------------------------



Require a particular size? We make to order Call 1800 75 93 93.

LUMBAR SUPPORT

- Manufactured from vinyl covered foam.
- Firm base.
- Chemically sealed seams.

CODE:

112220



NECK SUPPORT

- Manufactured from vinyl covered foam.
- Firm base.
- Chemically sealed seams.

CODE:

112221



ANKLE SUPPORT

- Vinyl covered foam.
- Firm base.
- Chemically sealed seams.

CODE:

112219



TRAPEZOID POSITIONER

- Vinyl covered foam.
- All seams chemically sealed.

CODE:

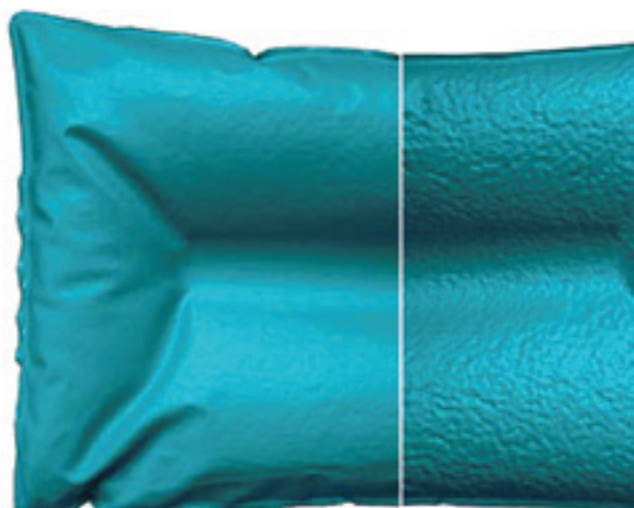
113599



> Body Supports

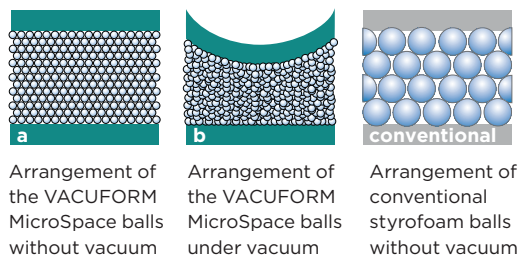
VACUFORM® SPACE SYSTEM

The optimized, advanced surgical bedding concept.



Microspace filling in the evacuated state

Conventional filling in the evacuated state



Arrangement of the VACUFORM MicroSpace balls without vacuum

Arrangement of the VACUFORM MicroSpace balls under vacuum

Arrangement of conventional styrofoam balls without vacuum

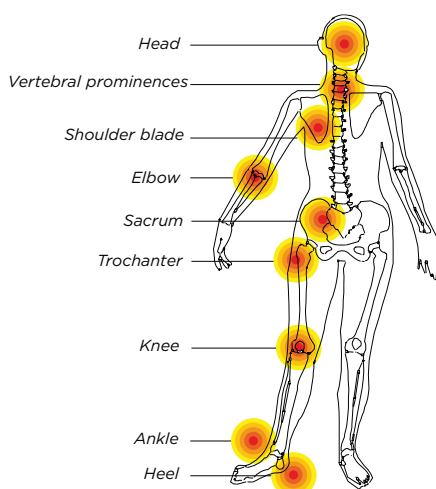


The secret of perfected adaptation to the body by VACUFORM surgical mattresses is microballs of styrofoam, which are stabilised by vacuum to give a lasting, completely supportive form. Reducing the diameter of the filler balls by a fifth enables more precise adaptation of the surgical mattresses to the body. The new MicroSpace system significantly increases the feeling of physical comfort for the patient compared to conventional fillings.

Particularly during time-consuming operations or with patients who are older and in poor condition, there is a risk of pressure points leading to acute decubital ulcers* and paresis (paralysis from nerve damage). The individual, ergonomic body adaptation of VACUFORM surgical mattresses effectively prevents such damage. The support pressure of the patient is optimally distributed over the whole body and thus reduced to a minimum. The microcirculation needed by the skin is unaffected. The patient has a noticeable feeling of comfort, a feeling of lightness and warmth.

- Further optimized pressure relief
- “Weightless” feeling (like a waterbed) despite stable immobilization
- Surface almost untextured

Decubitus prophylaxis in the operating theatre



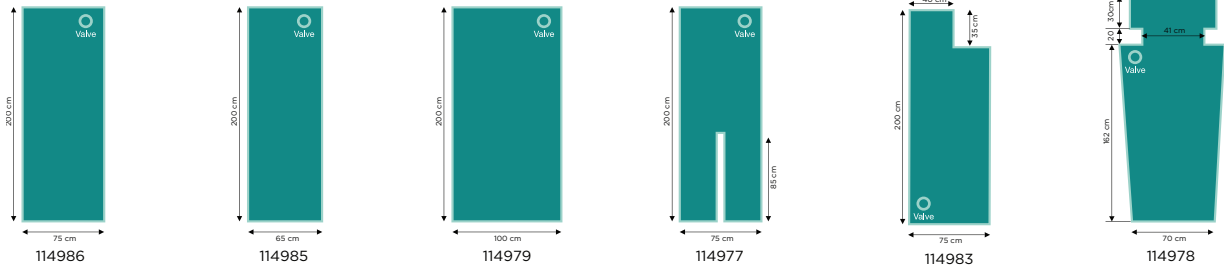
(Fig: Parts of the body at risk from decubitus)

VACUFORM®

*Decubitus (bedsore, pressure sore) is damage to the skin and underlying tissue caused by pressure sustained for a longer period of time. It results in pain, isolation and reduced quality of life for the patient. Problems with decubitus can arise with as little as 10 to 20 minutes of increased pressure.

> Body Supports

VACUFORM® SURGICAL MATTRESSES



CODE: SIZE:

- 114986 Vacuform Surgical Mattress 750mm x 2000mm
 114985 Vacuform Surgical Mattress 650mm x 2000mm
 114979 Vacuform Surgical Mattress 1000mm x 2000mm
 114977 Vacuform Surgical Mattress Split Leg 750mm x 2000mm
 114983 Vacuform Surgical Mattress Set for shoulder surgery including Infill 750mm x 2000mm
 114978 Vacuform Surgical Mattress for lateral positioning 950/700mm x 2120mm

Gel Covered options also available. Call Customer care on 1800 75 93 93.

VACUFORM® SURGICAL SHEET

CODE: SIZE:

- 114973 800mm x 2200mm
 (With 8 handles)



VACUFORM® NON SLIP FOIL

CODE: SIZE:

- 114974 400mm x 9000mm (1 Roll)
 114975 400mm x 1000mm (1 Piece)



VACUFORM® REPAIR KIT

CODE:

- 114981 Turquoise Blue



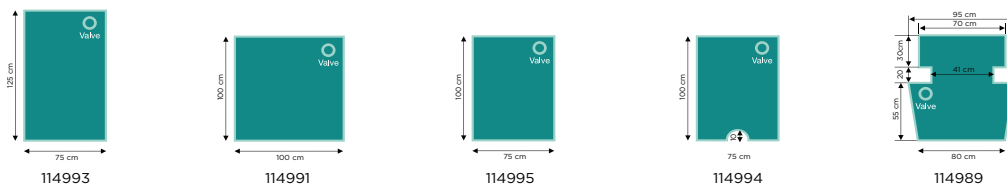
VACUFORM® VACUUM HOOD

CODE:

- 114987



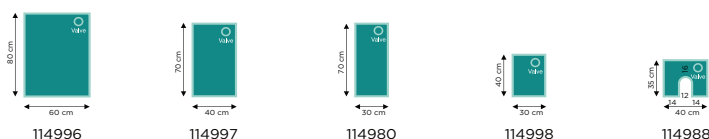
VACUFORM® SHORT SURGICAL MATTRESSES



CODE: SIZE:

- 114994 Vacuform Short Surgical Mattress with cutout 750mm x 1000mm
 114995 Vacuform Short Surgical Mattress 750mm x 1000mm
 114989 Vacuform Short Surgical Mattress 950mm x 1005mm
 114992 Vacuform Short Surgical Mattress with cutout 750mm x 1250mm
 114993 Vacuform Short Surgical Mattress 750mm x 1250mm
 114990 Vacuform Short Surgical Mattress with cutout 1000mm x 1000mm
 114991 Vacuform Short Surgical Mattress 1000mm x 1000mm

VACUFORM® SURGICAL CUSHIONS



CODE: SIZE:

- 114996 Vacuform Surgical Cushion 600mm x 800mm
 114997 Vacuform Surgical Cushion 400mm x 700mm
 114980 Vacuform Surgical Cushion 300mm x 700mm
 114998 Vacuform Surgical Cushion 300mm x 400mm
 114988 Vacuform Surgical Cushion with cutout 350mm x 400mm



> Body Supports

GEL SANDBAGS

- Sandbag positioners are used for a wide variety of procedures, including laminectomy, ankle and ophthalmic surgery.
- Sold in 9 different sizes for your convenience.

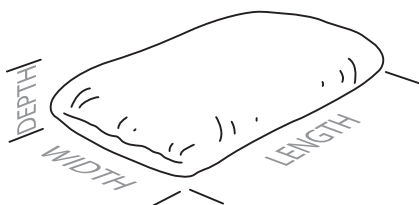
CODE:	SIZE:
111718	152mm x 38mm
111719	152mm x 9mm
111720	203mm x 38mm
111721	254mm x 38mm
111722	305mm x 38mm
111723	254mm x 114mm x 51mm
111724	305mm x 114mm x 51mm
111725	356mm x 127mm x 63mm
111726	406mm x 305mm x 38mm



VINYL SANDBAGS

- Provides stable patient positioning.
- Covered in black vinyl.
- Available with or without eyelet for use while applying traction.

CODE:	SIZE:
112229	260mm(L) x 100mm(W) x 50mm(D)
112230	260mm(L) x 100mm(W) x 50mm(D) eyelet
112233	325mm(L) x 150mm(W) x 50mm(D)
112234	325mm(L) x 150mm(W) x 50mm(D) eyelet
112231	340mm(L) x 120mm(W) x 50mm(D)
112232	340mm(L) x 120mm(W) x 50mm(D) eyelet
112235	340mm(L) x 150mm(W) x 50mm(D)
117016	340mm(L) x 150mm(W) x 50mm(D) eyelet
112236	400mm(L) x 180mm(W) x 50mm(D)
112237	400mm(L) x 180mm(W) x 50mm(D) eyelet



Require a particular size? We make to order Call 1800 75 93 93.

> Body Supports

GEL FLAT BOTTOM CHEST ROLLS

- Used to protect the patients chest while in prone position.

CODE: **SIZE:**

111702 305mm x 101mm x 101mm

111703 306mm x 152mm x 152mm

111704 406mm x 101mm x 101mm

111705 406mm x 152mm x 152mm

111706 508mm x 101mm x 101mm

111707 508mm x 152mm x 152mm



GEL CHEST ROLL COVER

- Held in place by hook & loop Velcro®.

CODE: **SIZE:**

111715 432mm x 305mm x 13mm



GRADUATED THORACIC POSITIONER

- This graduating size pad can be used in many procedures where full chest extension is required.

CODE: **SIZE:**

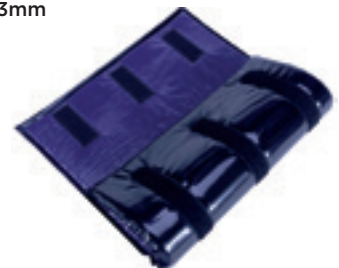
111713 356mm x 229mm x 63mm



GEL AUXILIARY ROLL COVER

CODE: **SIZE:**

111716 457mm x 457mm x 13mm



GEL PATIENT POSITIONER

CODE: **SIZE:**

111708 254mm x 114mm x 51mm (Small)

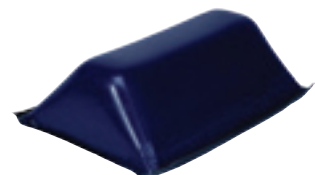
111709 356mm x 127mm x 57mm (Large)



GEL TRAPEZOID POSITIONER

CODE: **SIZE:**

111717 265mm x 170mm x 85mm

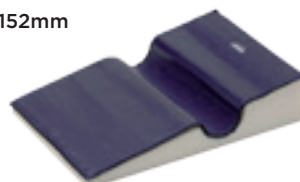


GEL LATERAL POSITIONER

- Protects the shoulder and arm while in the lateral position.

CODE: **SIZE:**

111714 711mm x 495mm x 152mm



GEL CHEST POSITIONER

- Contoured shape conforms to the patient's chest and shoulder.

CODE: **SIZE:**

111710 (Left) 711mm x 203mm x 76mm

111711 (Right) 711mm x 203mm x 76mm

111712 (Set - left & right)



> Leg Supports

LIFT ASSISTED LEG HOLDERS

- 270kg patient weight capacity.
- Gas spring pneumatic lift assist stirrups.
- 120 degree rotation.
- Handle controlled abduction and adduction.
- Requires pads (111781).
- Requires two stirrup clamps.

CODE:

111778

111781 Pad (Pair)



HEAVY DUTY LIFT ASSISTED LEG HOLDERS

- 360kg patient weight capacity.
- Gas spring pneumatic lift assist stirrups.
- 120 degree rotation.
- Handle controlled abduction and adduction.
- Requires pads (116120).
- Requires two stirrup clamps.

CODE:

111780

116120 Pad (Pair)



LIFT ASSISTED LEG HOLDER CART

- Stainless steel construction.
- Fits leg holders plus storage of related accessories.

CODE:

111786



LIFT ASSISTED LEG HOLDER AND YELLOFIN REPLACEMENT PADS

- Replacement pads for most types of stirrups available.

CODE:

111826 Yellofin Stirrup pads (Pair)

111781 Lift Assisted Stirrup pads (Pair)

116120 Heavy Duty Lift Assisted Stirrup pads (Pair)

114684 Powerlift Stirrup pads (Pair)

114634 Ultrafin Stirrup pads (Pair)



> Leg Supports

LLOYD DAVIES STIRRUPS AND PADS

CODE: **SIZE:**

111822	16
111840	Straps (Pair)
111770	Pads (Pair)
111839	Eschmann Type Replacement pads (Pair)



LITHOTOMY LEG HOLDERS

- Stainless steel construction.
- Requires two rotary clamps to attach to side rails.
- Requires Pads.
- Requires Straps.

CODE: **SIZE:**

111755	15 (Pair)
111757	16 (Pair)
111759	Vinyl pad (Pair)
111760	Strap D-Ring
111761	Strap Spring Clip
111599	Gel pad
111601	Gel Lithotomy Pole Straps small (Pair) 318mm x 47mm x 10mm
111602	Gel Lithotomy Pole Straps large (Pair) 440mm x 47mm x 10mm



KNEE CRUTCH SUPPORTS

- Stainless steel construction.
- Requires two rotary clamps to attach to siderails.
- Pads sold separately.

CODE: **SIZE:**

111766	15
111768	16
111770	Pads (Pair)
111771	Eschmann Type Replacement pads (Pair)



GEL LITHOTOMY LEG HOLDER STIRRUP PAD SET

- Protects patients during lengthy urology, gynaecology and lithotomy procedures.

CODE: **SIZE:**

111600	710mm x 50mm (Pair)
--------	---------------------

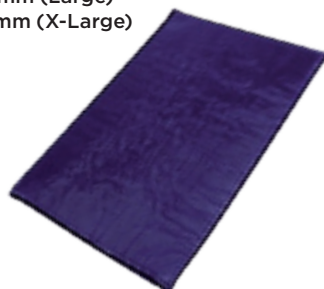


GEL KNEE CRUTCH PAD

- Used to support leg on knee crutch, Lloyd Davies and unaffected leg holder.

CODE: **SIZE:**

111677	279mm x 229mm x 10mm (Small)
111678	432mm x 279mm x 6mm (Medium)
111679	508mm x 508mm x 13mm (Large)
111680	688mm x 279mm x 13mm (X-Large)



> Leg Supports

ALTIMA LEG POSITIONERS

- Stainless steel construction.
- Pads and straps sold separately.
- Requires two round post clamps to attach to side rails.

CODE: **SIZE:**
 111772 16
 111773 Gel Pads
 111774 Vinyl Pads
 111775 Straps (set of 6)



PICKET FENCE LEG PREP UNIT

- Stainless steel construction.
- Requires one round post clamp to attach to side rails.

CODE:
 111795



LEG PREPPER

- Stainless steel construction.
- Requires one round post clamp to attach to side rails.
- Pad included.

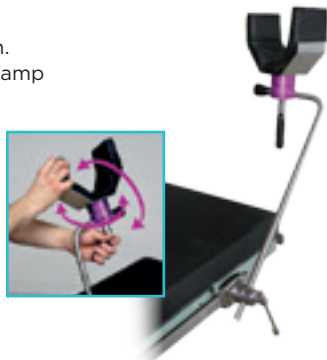
CODE: **SIZE:**
 111793 16
 111794 Pad



UNI PREPPER

- Stainless steel construction.
- Requires one round post clamp to attach to side rails.
- Pad sold separately.

CODE:
 111777
 111787 Pad



THIGH SUPPORT

- Stainless steel construction.
- Requires rotary clamp to attach to side rails.
- Pad and strap sold separately.

CODE: **SIZE:**
 111789 15
 111790 16
 111791 Pad
 111792 Strap



THIGH CLAMP

- Stainless steel construction.
- Requires one round bar clamp to attach to side rails.
- Pads and straps sold separately.

CODE: **SIZE:**
 111776 16
 111784 Pads (Pair)
 111785 Straps (Pair)



> Leg Supports

LIGHTWEIGHT LEG SUPPORT

- Manufactured to suit most tables with options that slide over rails or insert into leg receptacles.
- Supports legs during transfer.
- Weighs less than 5kg.
- Includes replaceable vinyl cover.
- Manufactured to suit most brands. Call with individual requirements.

CODE:

- 111809 Lightweight Leg Support to suit Skytron (shaped)
 111810 Lightweight Leg Support to suit 777
 111811 Lightweight Leg Support to suit ALM 6090
 111815 Lightweight Leg Support to suit Denyer XRT2000
 111816 Lightweight Leg Support to suit Denyer XRT3000
 111817 Lightweight Leg Support to suit Denyer XRT4000
 111818 Lightweight Leg Support to suit M Series
 111807 Lightweight Leg Support to suit Skytron (bar)
 111821 Lightweight Leg Support to suit Trans X
 111819 Lightweight Leg Support to suit RX500



**COMPLETE RANGE OF LIGHTWEIGHT LEG SUPPORT COVERS AVAILABLE.
 CALL CUSTOMER CARE ON 1800 75 93 93.**

FOOT REST

- Robust stainless steel frame with radiolucent board.
- Manufactured to suit most tables.
- Pad sold separately.
- Requires two multi clamps to attach to table.
- Specify table make & model with enquiry.

CODE: SIZE:

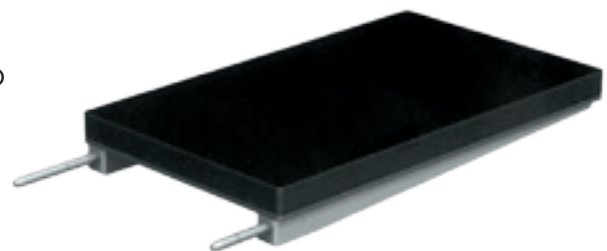
- 111802 600x300mm
 111800 Pad



FEMORAL/POPLITEAL BOARD

CODE:

- 111798 Femoral/Popliteal Board (specify dimensions)
 111799 Femoral/Popliteal Table Pad (specify dimensions and fixing)



SPLIT LEG SECTION

CODE:

- 111844 Specify table make/model (Pair)
 117017 Pad (Set)



UNIVERSAL SPLIT LEG SECTION

CODE:

- 111845 Universal Split Leg Section (Pair)
 117018 Pad (Set)



> Leg Supports

POPLITEAL SUPPORT

- Stainless steel construction.
- Requires one multi clamp to attach to table.
- Pad sold separately.

CODE: **SIZE:**

111763 34
116894 34 X-Ray Translucent
111762 16
111765 Pad 50mm(ID) x
90mm(OD) x 280mm(L)



FOOT STOCKS

- Vinyl covered foam with reinforced base.

CODE:

111797 Single
111796 Double



GEL FRACTURE TABLE FOOT PAD

- Use with fracture table foot holders and other stands.

CODE: **SIZE:**

111598 305mm x 100mm x 6mm

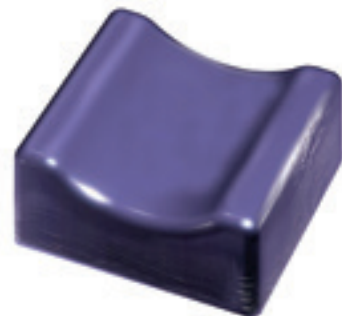


CONTOURED KNEE / CALF POSITIONER

- Contour 38mm deep.

CODE: **SIZE:**

113597 178mm x 178mm x 82mm



GEL CLAM SHELL HEEL PROTECTOR

- Place the patient's foot in the pad to protect the heel.
- Easy to use and clean.
- Uses hook and loop to secure the pad around the foot.
- Sold individually.

CODE:

111594



GEL HEEL CUP

- Holds the foot securely and protects the heel.
- Sold individually.

CODE:

111595



> Head Supports

OMNI CERVICAL EASE PILLOW

- Supports and isolates the patient's head and neck.
- Immobilises cervical spine and prevents lateral bending or twisting.
- Made of highly resilient, firm foam.
- Flexible vinyl coating for ease of cleaning.

CODE:
111732



VASCO HEAD PILLOW

- Raised neck area supporting cervical vertebra and trapezoid muscle.
- Air ventilation at the base maintains normothermia at the occipital bone.
- Smooth contoured surface allows maximum immersion.
- Easy to clean.

CODE:
114076



BRADBURY HEAD SUPPORT

- Seamless coating.

CODE:
111651



GEL PRONE / SUPINE HEAD REST

- Aids you to position the patient with respiration tubes in place.
- The unique design provides superior head control and stability.

CODE:
111610 Supine
111609 Prone



GEL HORSESHOE HEAD PAD

- Latex free.
- Easy to clean.

CODE:
111606 Adult
111607 Neo-Natal
111608 Paediatric
111611 Bariatric



HORSESHOE HEAD REST

- Vinyl covered foam.
- Solid base.
- Indentation for neck.

CODE:
111654



GEL DONUT HEAD PAD

- Protects the head during long procedures.
- Elevates and cradles the neck.

CODE:
111603 Adult
111604 Paediatric
111605 Neo-Natal
111612 Bariatric



DONUT HEAD RING

- Vinyl covered foam.

CODE:
111652 Adult
111653 Paediatric



> Head Supports

OPHTHALMIC HEAD SECTION

- Provides clear access for seated surgeons.
- Attaches to head or leg section receptacles.
- Stainless steel and aluminium construction.
- Manufactured to suit most operating tables.
- Call with individual requirements.
- Requires pad (114080).

CODE:

111660	Ophthalmic Head Section 3980/3085
111659	Ophthalmic Head Section ALM
111662	Ophthalmic Head Section RX500
111663	Ophthalmic Head Section Skytron
111664	Ophthalmic Head Section Trans X
111661	Ophthalmic Head Section Denyer 3000
114080	Ophthalmic Head Section Pad



HORSESHOE HEAD ATTACHMENT

- Stainless steel construction.
- Height adjustable with 360 degree rotation of headrest.
- Attaches to receptacles - specify table make and model with order.

CODE: 111666



GEL CONTOURED HEAD PAD

- Rigid foam construction.
- Latex free.
- Vinyl covered.

CODE: SIZE:

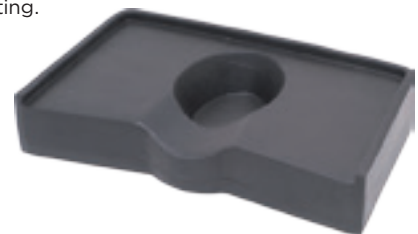
111676	180mm x 180mm x 80mm (32mm contour)
--------	--



DIXIE PILLOW

- Rigid foam construction.
- Latex free.
- Seamless vinyl coating.

CODE: 111655



GEL SUPINE HEAD PAD WITH DISH

- This self centering dish conforms to the patients head while offering support.

CODE:

111614	Adult
111672	Paediatric
111674	Neo-Natal



GEL LATERAL HEAD PAD WITH CENTRE DISH

- Reduces pressure and protects your patients ear, jaw and side of the face.

CODE:

111615	Adult
111673	Paediatric
111675	Neo-Natal



EYE SURGERY PILLOW

- Covered in soft four way stretch vinyl for patient comfort.

CODE: 111669



GEL RICHARD TYPE HEAD REST

- Improves comfort and head stability when patient is on the side or supine.

CODE: 111613



> Arm Supports

LOCKING ARMBOARD

- Does not require side rail clamps.
- Hooks securely over the siderail of the table.
- Rotates 180 degrees from table.
- Requires pad (111360 – 111362).

CODE:	SIZE:
111353	A Rails
111356	B Rails
111358	D Rails
111359	E Rails
111360	25mm Pad
111361	50mm Pad
111362	75mm Pad



LIFT ADJUST LOCKING ARMBOARD

- Does not require side rail clamps.
- Hooks securely over the siderail of the table.
- Rotates 180 degrees from table.
- Requires pad (111360 – 111362).

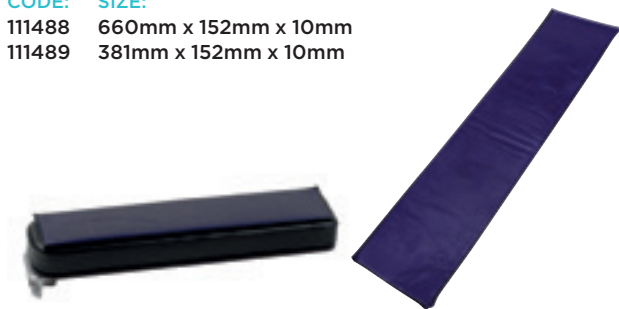
CODE:	SIZE:
111354	A Rails
111360	25mm Pad
111361	50mm Pad
111362	75mm Pad



GEL LOCKING ARMBOARD PAD

- Protects hand, forearm, elbows and biceps.

CODE:	SIZE:
111488	660mm x 152mm x 10mm
111489	381mm x 152mm x 10mm



ARMBOARD RESTRAINT STRAP

- Two part strap with double Velcro® closures.
- Lower strap secures around armboard.
- Upper strap secures around patients arm.

CODE:
111548



GEL CONCAVE ARMBOARD

- Contoured for multi direction support.

CODE:	SIZE:
111495	530mm x 150mm x 50mm (Large)
111496	410mm x 150mm x 50mm (Small)



ECONOMY ARMBOARD RESTRAINT

- One piece Velcro® strap with buckle.
- Loops around armboard to secure patients arm.
- Set of six straps.

CODE:
111549 Set of 6



> Arm Supports

ELEVATING ROTATIONAL ARMBOARD

- One hand operated ball joint lock release.
- Ball joint tilt of 38 degrees in any direction.
- Limitless rotational capability.
- Requires pad (114094).
- Requires one universal bar clamp or universal rotary clamp to attach to table.

CODE:

113635 Armboard
114094 Concave Pad



STANDARD ARMBOARD

- Simple, easy to use design.
- Height adjustable.
- Requires one round post clamp for mounting.
- Requires pad (111341 – 111343).

CODE: SIZE:

111339 16
111344 Standard Armboard Pad 585mm x 205mm x 25mm
111345 Standard Armboard Pad 585mm x 205mm x 50mm
111346 Standard Armboard Pad 585mm x 205mm x 75mm
111347 Standard Armboard Pad 590mm x 155mm x 25mm
111348 Standard Armboard Pad 590mm x 155mm x 50mm
111349 Standard Armboard Pad 590mm x 155mm x 75mm
111341 Standard Armboard Pad 600mm x 200mm x 25mm
111342 Standard Armboard Pad 600mm x 200mm x 50mm
111343 Standard Armboard Pad 600mm x 200mm x 75mm
111350 Standard Armboard Pad 620mm x 130mm x 25mm
111351 Standard Armboard Pad 620mm x 130mm x 50mm
111352 Standard Armboard Pad 620mm x 130mm x 75mm



GEL OVAL ULNAR/BRACHIAL PROTECTOR

CODE: SIZE:

111491 400mm x 152mm x 13mm

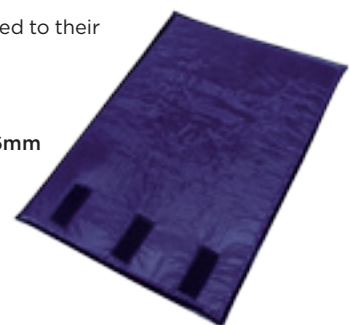


GEL ULNAR/BRACHIAL PROTECTOR

- Protects the forearm, wraps around the patients arm and secures with hook and loop.
- When patients arms are tucked to their sides, helps to prevent ulnar nerve damage.

CODE: SIZE:

111490 457mm x 330mm x 6mm



GEL HAND PROTECTOR WITH VELCRO®

- Encloses hand and secures with Velcro® straps.

CODE: SIZE:

114660 152mm x 203mm



GEL ELBOW PAD

- Positions and cradles the elbow to relieve pressure.
- 85mm(dia) x 38mm.

CODE:

111494



> Arm Supports

HOURLASS ARM TABLE

- Fully radio translucent.
- Height adjustable telescopic leg provides additional support.
- Requires pad.
- Requires two round post clamps for mounting.

CODE:	SIZE:
111398	800mm x 540mm
111399	Hourglass Shaped Arm Table pad 50mm (Standard)
117019	Hourglass Shaped Arm Table pad 25mm



Call Customer
Care to determine
correct pad
1800 75 93 93.

SURGICAL ARM TABLE

- Fully radio translucent.
- Height adjustable telescopic leg provides additional support.
- Requires pad.
- Requires two round post clamps for mounting.

CODE:	SIZE:
111402	800mm x 400mm
111403	25mm pad
111404	50mm pad



WIDE ARMBORD

- Radio translucent top.
- Requires two round post clamps for mounting.
- Requires pad.

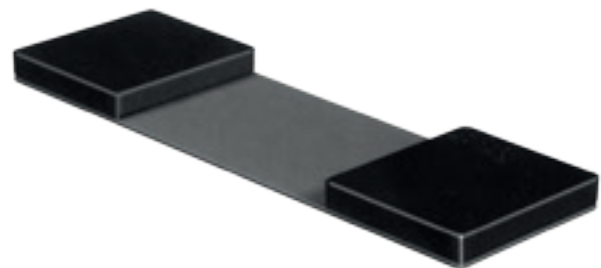
CODE:	SIZE:
111395	600mm x 400mm
111396	25mm pad
111397	50mm pad



PRONE ARM SUPPORT

- Radio translucent material.
- Requires two pads (111379).

CODE:	
111378	
111379	Pad (Each)



MOBILE ARM TABLE

- Stainless steel construction.
- Height adjustable.
- 2 x 75mm castors.

CODE:	SIZE:
116760	750mm x 490mm
116627	Pad 50mm



> Arm Supports

RIGHT ANGLE ARM SUPPORT

- Full aluminium or perspex construction.
- Slips under table mattress.
- Requires pad (111385).

CODE:	SIZE:
111383	Aluminium 95mm wide
111386	Perspex
111385	Pad



J ARM SUPPORT

- Full perspex construction.
- Slips under table mattress.
- Requires pad (111382).

CODE:	SIZE:
111380	90mm wide
111382	Pad - regular
114186	113mm wide
114642	Extra Wide Pad



SLIP IN ARM SUPPORT

- Slips behind the siderails of the operating table.
- Requires pad 111390.

CODE:	SIZE:
111388	105mm wide
111390	Pad



SURGICAL TABLE ARM GUARD

- Fully radio translucent.
- Slips under table mattress.
- Requires pad (111392).

CODE:	
111391	
111392	Pad
111492	Gel Pad



CARTER BRAINE ARM SUPPORT

- Full stainless steel construction.
- Ball swivel joint allows for infinite positioning.
- Requires one round post or rotary clamp for mounting.
- Requires pad (111372).

CODE:	SIZE:
111368	15
111370	16
111372	Pad 230mm Length
111373	Pad 270mm Length



LATERAL ARM SUPPORT

- Designed particularly for obese patients.
- Adjusts vertically and horizontally.
- Requires one round post clamp for mounting.
- Requires pad (111377).

CODE:	
111376	
111377	Pad



MULTI POSITION ARMBOARD

- Allows for very flexible positioning.
- Requires one round post clamp for mounting.
- Requires pad (111365 or 111366).

CODE:	SIZE:
111363	16
111365	Pad 50mm
111366	Concave Pad



> Velcro®

ADHESIVE BACKED VELCRO®

- 10m roll.

CODE:

113335	25mm Hook Black
113336	50mm Hook Black
113337	25mm Loop Black
113338	50mm Loop Black

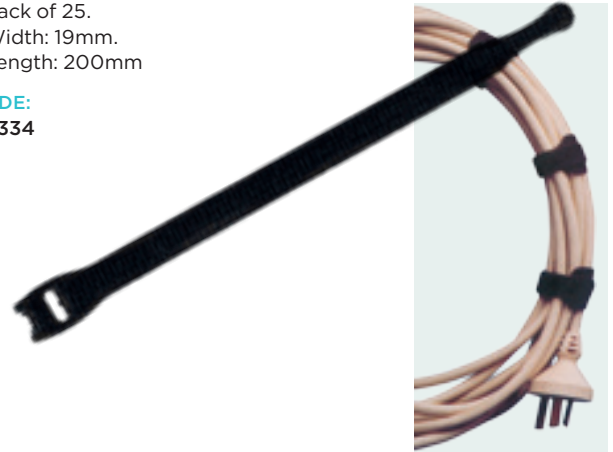


VELCRO® (CABLE STRAP)

- Pack of 25.
- Width: 19mm.
- Length: 200mm

CODE:

113334



VELCRO® (QUICK STRAP)

- The ultimate strap for any patient restraint requirement.
- Loop Velcro® one side and hook Velcro® the other, this unique material allows you to create any length of strap.
- Just roll out and cut with scissors.

CODE:

113332	25mm Black
113333	50mm Black



VELCOINS

- A simple yet effective fastening system ideally suited to locating, fastening and displaying items.
- Pack of 50.

CODE:

116969	Velcoin Black 22mm Hook
116970	Velcoin Black 22mm Loop



ARMBOARD RESTRAINT STRAP

- 2 part strap with double Velcro® closures.
- Lower strap secures around armboard.
- Upper strap secures around patients arm.

CODE:

111548



ECONOMY ARMBOARD RESTRAINT

- One piece Velcro® strap with buckle.
- Loops around armboard to secure patients arm.
- Set of six straps.

CODE:

111549 Set of 6



> Orthopaedic Supports

HIPAC ORTHOPAEDIC POSITIONING SYSTEM

The Hipac Orthopaedic traction frame is designed for streamlined positioning of patients during lower extremity and hip procedures. Its lightweight carbon fibre and aluminum construction ensures the weight of the frame is kept to a minimum and almost shadow free enhanced imaging capabilities are provided through the unique shape of its carbon fibre leg spars.

The Hipac Orthopaedic Positioning System is vendor neutral and is manufactured to suit any model and make of operating table.

The frame is designed and manufactured in Australia by Hipac and to Hipac's stringent quality standards.

CODE:

112084 Hipac Orthopaedic Positioning System



Traction Assembly.



Traction Clamp.



Straight Extension.



Sacral Rest.

> Orthopaedic Supports

HIPAC ORTHOPAEDIC POSITIONING SYSTEM

Package Includes:

- 1 x Table Attachment Frame.
- 2 x Carbon Fibre Leg Spars.
- 2 x Traction Assemblies.
- 3 x Traction Clamps.
- 1 x Ortho Popliteal.
- 1 x Straight Extension.
- 1 x Sacral Assembly.
- 1 x Lightweight Leg Support.
- 1 x Unaffected Leg Holder.
- 1 x Mobile Storage Cart.



Carbon Fibre Leg Spar.



Table Mount Frame.



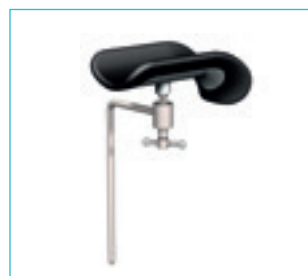
Perineal Post.



Lightweight Leg Support.



Ortho Popliteal Support.



Unaffected Leg Holder.



Mobile Storage Cart.

> Orthopaedic Supports

ORTHO LIGHTWEIGHT LEG SUPPORT

- To suit Amsco Steris and 777 orthopaedic traction frames.
- Stainless steel and vinyl construction.

CODE:

112100

112101 Cover

112103 Pad



K WIRE ADAPTOR

- To suit Amsco Steris and 777 orthopaedic traction frames.
- Stainless steel construction.

CODE:

112119



ORTHO DRAPE SUPPORT

- To suit Amsco Steris and 777 orthopaedic traction frames.
- Stainless steel and aluminium construction.

CODE: SIZE:

112111 16



HIP REST

- To suit Amsco Steris and 777 orthopaedic traction frames.
- Carbon fibre construction.

CODE:

111649

116139 Pad



BUTTOCK SUPPORT

- Stainless steel construction.
- Includes replaceable vinyl covered foam pads.
- Adaptable to most table types (specify make and model).
- Requires two round post clamps for mounting.
- Prevents patient slide in. Reverse Trendelenburg Lithotomy.

CODE: SIZE:

111541 16



UNAFFECTED LEG HOLDER

- To suit Amsco Steris and 777 orthopaedic traction frames.
- Stainless steel and aluminium construction.

CODE:

112104

112106 Pad



SACRAL REST

- To suit Amsco Steris and 777 orthopaedic traction frames.
- Carbon fibre construction.

CODE:

112107 Sacral Rest

112108 Pad

117020 Triangular Sacral Rest

116328 Triangular Sacral Rest pad



112107



116328

PERINEAL POST

- To suit sacral rest 112107.
- Call for special requirements.

CODE:

112087

112088 Pad



LARGE SACRAL REST

- To suit Amsco Steris and 777 orthopaedic traction frames.
- Carbon fibre construction.

CODE:

112109

112110 Pad

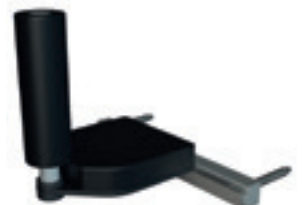


SACRAL REST ASSEMBLY

- Specify table make and model.
- Complete assembly that can be fitted to any operating table.

CODE:

112135



> Orthopaedic Supports

RIGHT ANGLE EXTENSION

- To suit Amsco Steris and 777 orthopaedic traction frames.
- Stainless steel construction.

CODE: 112114 **SIZE:** 35



STRAIGHT EXTENSION

- To suit Amsco Steris and 777 orthopaedic traction frames.
- Stainless steel construction.

CODE: 112112 **SIZE:** 35



ORTHO POPLITEAL SUPPORT

- To suit Amsco Steris and 777 orthopaedic traction frames.

CODE: 112118 **SIZE:** 35
111765 Pad



TRACTION CLAMP

- To suit Amsco Steris and 777 orthopaedic traction frames.
- Stainless steel construction.
- Accepts size 16 round post.
- Accepts size 35 rectangular post.

CODE: 112096



TRACTION ASSEMBLY

- To suit Amsco Steris and 777 orthopaedic traction frames.

CODE: 116964 **SIZE:** 35



TRACTION BOOTS

- CODE:**
- 112091 Traction Boots 777
 - 112092 Traction Boots Steris
 - 112093 Traction Boots Denyer
 - 112094 Traction Boots Eschmann
 - 112095 Traction Boots Maquet

Image varies for each product, 112092 and 112093 pictured.



TIBIA NAILING ATTACHMENT

- Designed to support patients while performing Tibia Nailing.
- Stainless steel construction.
- Can be manufactured to fit any make or model of table. Specify table name and model.

CODE: 112097 **SIZE:**
111372 Pad
111315 Popliteal Pad 280mm(L) x 25mm(ID)



> Orthopaedic Supports

LIFT ASSISTED SHOULDER CHAIR

- Pneumatic assisted linear motion.
- Adjusts to fit any operating table.
- Lateral brace included.
- Articulation range of 0-90 degrees.
- Fits A size rail as standard.

CODE:

- 111299 Lift Assisted Shoulder Chair
112131 Disposable Head Strap and Chin Strap (Case of 12)
113605 Disposable Head Wrap (Case of 12)
112125 Pad set (3 sections, 50mm)



TRANSPORT TROLLEY

- Suitable for use with the 111299 Lift Assisted Shoulder Chair and Skytron Specific Lift Assisted Shoulder Chair.

CODE:

- 112130 To suit 111299
112127 To suit 112124



LATERAL BRACE

- Suits lift assist shoulder chair.
- Can be positioned and adjusted to suit different sized patients.

CODE:

114661



SKYTRON SPECIFIC LIFT ASSISTED SHOULDER CHAIR

- Suits Skytron Operating Tables.
- Table back pins remove the need for manual lifting.
- Articulation range of 0-90 degrees.

CODE:

- 112124 Skytron Specific Lift Assisted Shoulder Chair
112131 Disposable Head Strap and Chin Strap (Case of 12)
113605 Disposable Head Wrap (Case of 12)
112125 Pad set (3 sections, 50mm)



SKYTRON SHOULDER CHAIR ADAPTOR

- Adaptor to attach a 112124 Shoulder Chair to a 5801 Operating Table.
- Allows frame to be moved using the table back pins.

CODE:

112124



> Orthopaedic Supports

GEL CHEST POSITIONER

- Contoured shape conforms to the patient's chest and shoulder.

CODE:

111710 Gel Chest Positioner (Left Side Only) 711mm x 203mm x 76mm
111711 Gel Chest Positioner (Right Side Only) 711mm x 203mm x 76mm



TWO PIECE LAMINECTOMY REST

CODE:

111336



WILSON FRAME REPLACEMENT PADS

- Set of four sections.

CODE:

112113



GEL WILSON FRAME PAD

CODE: SIZE:

111691 737mm x 254mm x 13mm (Each)



> Orthopaedic Supports

ADJUSTABLE LAMINECTOMY BRIDGE

- Provides a convenient and stable method of positioning patients in prone position for spinal procedures.

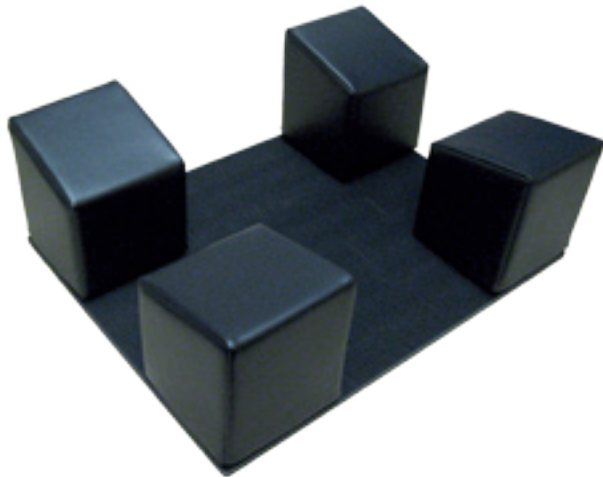
CODE:
112136



ELITE POSITIONER

- Pads can be moved to any position on the base of this positioner to create a variety of different support options.
- Manufactured from vinyl covered foam.
- Latex free.
- Seams chemically sealed.
- Requires four pads (114643).

CODE:
114190
114643 Pads – Sold individually



FOAM LAMINECTOMY REST

- Vinyl covered high density foam.
- Provides stable torso positioning for spinal procedures.
- All seams chemically sealed.

CODE:
112086



GILLESPIE PILLOW

- Vinyl covered foam.
- Latex free.
- All seams chemically sealed.

CODE:
112085



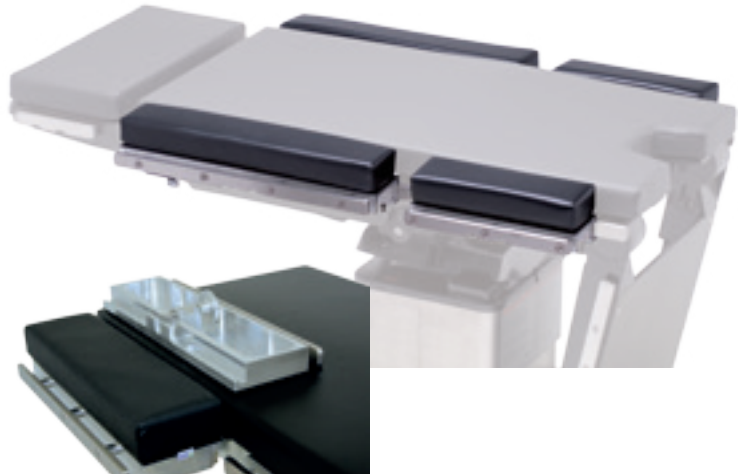
> Bariatric Supports

DIRECT ON TABLE WIDTH EXTENDER SET

- No need to slide along side rail from the end of the table.
- Fits directly into position.
- Sold as individual sections.
- Each unit extends table width 130mm.

CODE:

- 111530 Direct on table width extension A size rail.
 116346 Direct on table width extension B size rail.
 116347 Direct on table width extension D size rail.
 116348 Direct on table width extension E size rail.
 111576 Replacement pads
 450mm x 120mm x 50mm – Standard
 111577 Replacement pads
 450mm x 120mm x 50mm – Deluxe



EXTRA WIDE MATTRESS SET

- Designed for use with table width extension sets.
- Attaches to table with Velcro®.

CODE: SIZE:

- 116965 To suit 3600B
 116966 To suit 5801S
 116967 To suit 6700B



PELVIC TILT SEAT

- Suits Skytron operating tables.
- Stainless steel and aluminium construction.
- Replaceable vinyl pad.
- Allows for greater patient positioning.
- Safely takes the weight of the patient during laparoscopic band / laparoscopic sleeve surgery.

CODE:

- 111579
 111581 Pelvic Tilt Seat Pad



NISSEN STRAPS

- Designed to hold the patient securely while in steep reverse trendelenburg.
- Attaches to table side rails.

CODE: SIZE:

- 111583 A Rail
 117021 B Rail
 117022 D Rail
 117023 E Rail



> Bariatric Supports

FOOT REST

- Robust stainless steel frame with radiolucent board.
- Manufactured to suit most tables.
- Pad sold separately.
- Requires two multi clamps to attach to table.
- Specify table make & model with enquiry.

CODE: **SIZE:**
 111802 600x300mm
 111800 Pad



EXTRA LONG PATIENT RESTRAINT STRAP

- All rubber for secure restraint.
- Straps secure to siderail with or without hooks.
- Latex free.

CODE:
 111561
 111540 Optional Mounting Hooks (Pair)



BARIATRIC GEL LAP BELT PADS

- Used in conjunction with restraint strap.

CODE: **SIZE:**
 111497 914mm x 152mm x 6mm (Medium)
 111498 1219mm x 178mm x 6mm (Large)



BARIATRIC GEL KNEE CRUTCH PADS

CODE: **SIZE:**
 111499 279mm x 229mm x 25mm (Small)
 111500 432mm x 279mm x 25mm (Medium)
 111501 508mm x 508mm x 25mm (Large)



BARIATRIC GEL HORSESHOE HEAD PAD

CODE: **SIZE:**
 111611 203mm x 76mm 76mm



BARIATRIC GEL DONUT HEAD PAD

CODE: **SIZE:**
 111612 203mm x 76mm x 76mm



> Anaesthetic Supports

PRONE ANAESTHETIC PILLOW

- Twin layered foam with soft vinyl cover.
- Provision for tubing.

CODE:
111424



FORM-A-SCREEN

- Flexible anaesthetic screen.
- Shapes into any configuration.
- Requires two round post clamps.

CODE:
111432



DISPOSABLE ANAESTHETIC PILLOW

- Twin layered foam.
- Provision for tubing.

CODE:
113613



ADJUSTABLE ANAESTHETIC SCREEN SUPPORT

- Height adjustable.
- Multi positional.
- Mounts using round post clamp.

CODE:
111431



CARDIAC HEAD CAGE

- Stainless steel construction.
- Adjustable width to suit various tables.
- Requires two round posts clamps for mounting.
- Specify table make and model with order.

CODE:
111425



ANAESTHETIC SCREEN SUPPORT

- Simple design.
- Stainless steel construction.
- Replaceable pad included.
- Fits into round post clamp.

CODE: **SIZE:**
111426 15
111428 16
111430 Pad



TUBE HOLDER

- Impact resistant plastic.
- Slotted to accept tubing.

CODE:
110992



ANAESTHETIC PILLOW

- Vinyl covered medium density foam.
- 250mm x 150mm x 50mm.

CODE:
111320



ISOLATION DRAPE SUPPORT

- Consists of 3 sections with clamps.
- Stainless steel and aluminium construction.
- Attaches to IV poles via mounting clamps.

CODE:
111434



> Restraints

VELCRO® RESTRAINT STRAPS

- Two piece straps with stainless steel side rail mounts.

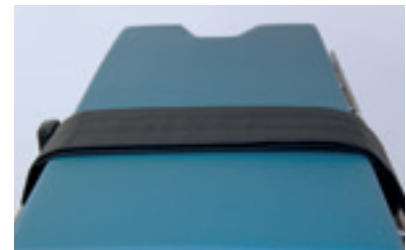
CODE:	SIZE:
111550	A Rail
111551	B Rail
111552	D Rail
111553	E Rail



ROBINA STRAP

- Soft deluxe fabric construction with Velcro®.
- Strap loops around the table side rails and back over the patient.

CODE:	SIZE:
111562	Long – 2100mm(L) x 150mm(W)
111563	Medium – 1800mm(L) x 150mm(W)



ALL RUBBER TABLE RESTRAINT

- All rubber for secure restraint.
- Straps secure to siderail with or without hooks.
- Latex free.

CODE:	
111537	All Rubber Table Restraint
111561	Extra Long Patient Restraint Strap
111540	Optional Mounting Hooks (Pair)



ARMBOARD RESTRAINT STRAP

- 2 part strap with double Velcro® closures.
- Lower strap secures around armboard.
- Upper strap secures around patients arm.

CODE:
111548



ECONOMY ARMBOARD RESTRAINT

- One piece Velcro® strap with buckle.
- Loops around armboard to secure patients arm.
- Set of six straps.

CODE:
111549 Set of 6



> Replacement Mattresses

REPLACEMENT MATTRESSES

Choose from our traditional Standard Series mattress or Comfort Series – a layered construction topped with memory foam and covered in four way stretch vinyl.

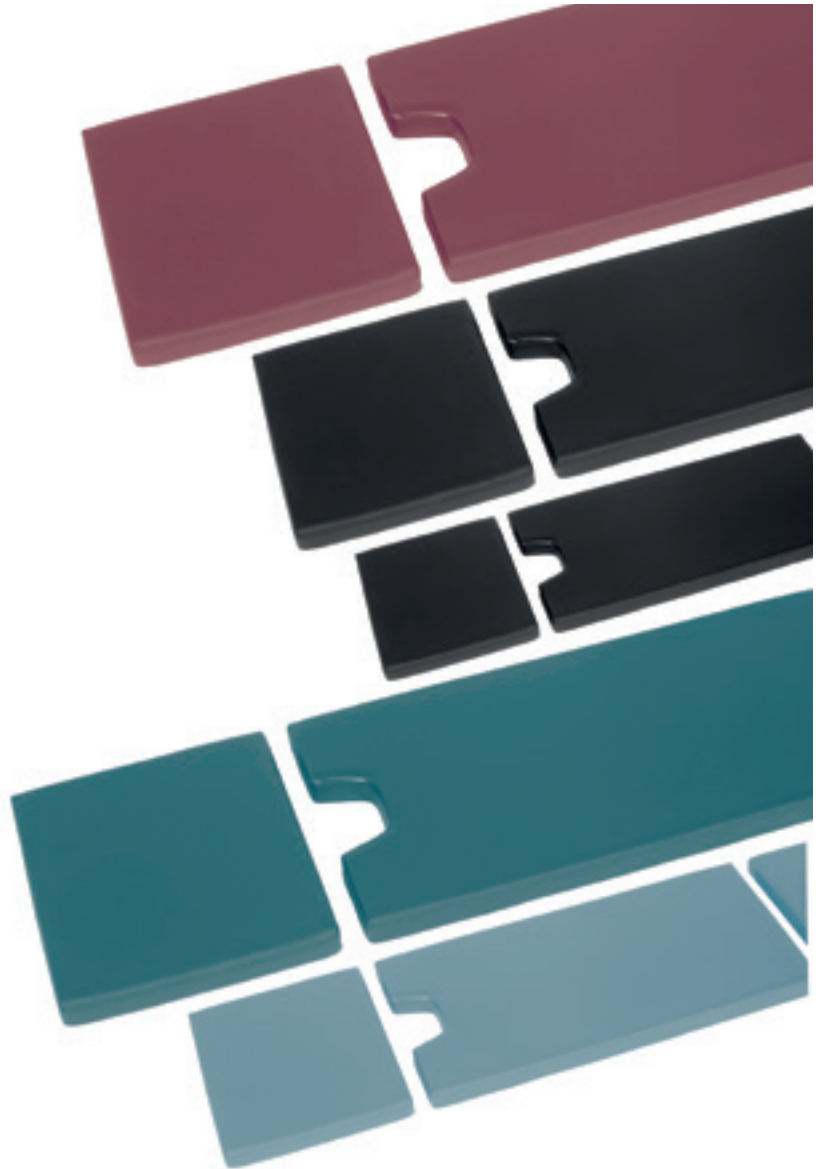
- Upholstered in high grade polyurethane foam.
- Chemically sealed seams – impervious to body fluids.
- Standard sizes available.
- Available in a range of colours. (Standard Series only).
- Custom sections manufactured to your dimensions.
- Attached to table by means of Velcro® or choose an Anti Slip base.
- Latex Free.

Detailed on the following pages are a selection of our range of standard mattress sets. Many more are available on request. Call Customer Care on 1800 759 393 to discuss your requirements.

Colours to suit most environments.



Black



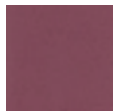
Slate blue



Peacock



Baltic mist



Wine berry



Coral



Harvest wheat



Sea foam



Cameo



Antelope

CUSTOM SIZED MATTRESS SECTIONS 0 TO 600MM WIDTH

	Standard series black 50mm	Standard series black 75mm	Comfort series black 50mm	Comfort series black 75mm
0-400mm	116638	116640	116654	116656
401-700mm	116642	116644	116658	116660
701-1300mm	116646	116648	116662	116664
1301-2000mm	116650	116652	116666	116668

> Replacement Mattresses

SKYTRON 3600B OPERATING TABLE MATTRESS



	Standard series black 50mm	Standard series black 75mm	Comfort series black 50mm	Comfort series black 75mm
Three Section Table Pad Set with Cutout (Standard)	115146	115233	115148	115234
Three Section Table Pad Set without Cutout	115116	115231	115147	115232
Mid Section with Cutout (Standard)	115586	115588	115582	115584
Mid Section without Cutout	115585	115587	115581	115583
Head Section	115591	115592	115589	115590
Leg Section	115561	115562	115559	115560

HIPAC 5801S OPERATING TABLE MATTRESS



	Standard series black 50mm	Standard series black 75mm	Comfort series black 50mm	Comfort series black 75mm
Three Section Table Pad Set with Cutout	115238	115546	115153	115154
Three Section Table Pad Set without Cutout	115240	115239	115155	115156
Mid Section with Cutout	115552	115554	115548	115550
Mid Section without Cutout	115585	115587	115581	115583
Head Section	115557	115558	115555	115556
Leg Section	115561	115562	115559	115560

AMSCO STERIS 3080/3085 SP OPERATING TABLE MATTRESS



	Standard series black 50mm	Standard series black 75mm	Comfort series black 50mm	Comfort series black 75mm
Three Section Table Pad Set with Cutout (Standard)	115204	115653	111848	115117
Three Section Table Pad Set without Cutout	115203	115202	115118	115119
Head Section	115661	115662	115169	115660
Mid Section with Cutout (Standard)	115657	115659	115280	115655
Mid Section without Cutout	115656	115658	115005	115654
Leg Section	115665	115666	115663	115664

AMSCO STERIS CMAX/4085 OPERATING TABLE MATTRESS



	Standard series black 50mm	Standard series black 75mm	Comfort series black 50mm	Comfort series black 75mm
Three Section Table Pad Set with Cutout (Standard)	115205	115206	115120	115121
Three Section Table Pad Set without Cutout	115207	115208	115122	115123
Head Section	115677	115678	115675	115676
Mid Section with Cutout (Standard)	115672	115674	115668	115670
Mid Section without Cutout	115671	115673	116458	115669
Leg Section	115681	115667	115679	115680

> Replacement Mattresses

IMAGE 777 OPERATING TABLE MATTRESS



	Standard series black 50mm	Standard series black 75mm	Comfort series black 50mm	Comfort series black 75mm
Four Section Table Pad Set with Cutout (Standard)	115243	115245	114683	115157
Four Section Table Pad Set without Cutout	115242	115241	115158	115159
Three Section Table Pad Set with Cutout (replaces Mid and Stump Sections)	115651	115652	115649	115650
Head Section	115631	115632	115629	115630
Mid Section	115625	115628	115621	115623
Stump Section with Cutout	115626	115627	115622	115624
Stump Section without Cutout	115647	115648	115645	115646
Leg Section	115635	115636	115633	115634

IMAGE 777 SHORT OPERATING TABLE MATTRESS



	Standard series black 50mm	Standard series black 75mm	Comfort series black 50mm	Comfort series black 75mm
Three Section Table Pad Set with Cutout (Standard)	115163	115620	115246	115244
Three Section Table Pad Set without Cutout	115248	115161	115162	115160
Head Section	115631	115632	115629	115630
Mid Section with Cutout	115642	115644	115638	115640
Mid Section without Cutout	115641	115643	115637	115639
Leg Section	115544	115545	115542	115543
Optional Infill Section	116989	116990	116991	116992

IMAGE 4000 OPERATING TABLE MATTRESS



	Standard series black 50mm	Standard series black 75mm	Comfort series black 50mm	Comfort series black 75mm
Three Section Table Pad Set with Cutout (Standard)	116930	116931	116932	116933
Three Section Table Pad Set without Cutout	116934	116935	116936	116937
Head Section	115540	115541	115538	115539
Mid Section with Cutout (Standard)	116938	116939	116940	116941
Mid Section without Cutout	116942	116943	116944	116945
Leg Section	115544	115545	115542	115543

IMAGE 4000ST OPERATING TABLE MATTRESS



	Standard series black 50mm	Standard series black 75mm	Comfort series black 50mm	Comfort series black 75mm
Four Section Table Pad Set with Cutout (Standard)	116946	116947	116948	116949
Head Section	115540	115541	115538	115539
Upper Body Section with Cutout	116950	116951	116952	116953
Lower Infill Section	116954	116955	116956	116957
Leg Section	115544	115545	115542	115543

> Replacement Mattresses

IMAGE 5000 / TRANS X OPERATING TABLE MATTRESS



	Standard series black 50mm	Standard series black 75mm	Comfort series black 50mm	Comfort series black 75mm
Four Section Table Pad Set with Cutout (Standard)	115093	115178	115092	115177
Four Section Table Pad Set without Cutout	115091	115176	115090	115175
Head Section	115540	115541	115538	115539
Upper Body Section	115544	115545	115542	115543
Lower Body Section with Cutout (Standard)	115535	115537	115531	115533
Lower Body without Cutout	115534	115536	115530	115532
Leg Section	115544	115545	115542	115543
Optional Infill Section	116989	116990	116991	116992

ESCHMANN J3 OPERATING TABLE MATTRESS



	Standard series black 50mm	Standard series black 75mm	Comfort series black 50mm	Comfort series black 75mm
Four Section Table Pad Set with Cutout (Standard)	115095	115180	115094	115179
Head Section	115452	115453	115450	115451
Upper Body Section with Cutout (Standard)	115444	115445	115442	115443
Lower Infill Section	115448	115449	115446	115447
Leg Section	115456	115457	115454	115455

ESCHMANN MR OPERATING TABLE MATTRESS



	Standard series black 50mm	Standard series black 75mm	Comfort series black 50mm	Comfort series black 75mm
Four Section Table Pad Set with Cutout (Standard)	115099	115184	115098	115183
Four Section Table Pad Set without Cutout	115097	115182	115096	115181
Head Section	115491	115492	115489	115490
Upper Body Section	115485	115487	115481	115483
Lower Body Section with Cutout (Standard)	115486	115488	115482	115484
Lower Body without Cutout	115401	115402	115403	115404
Leg Section	115495	115496	115493	115494

ESCHMANN RX500 OPERATING TABLE MATTRESS



	Standard series black 50mm	Standard series black 75mm	Comfort series black 50mm	Comfort series black 75mm
Five Section Table Pad Set with Cutout (Standard)	115107	115191	115106	115190
Five Section Table Pad Set without Cutout	115105	115189	115104	115188
Head Section	115508	115509	115506	115507
Upper Body Section	115501	115503	115497	115499
Lower Body Section with Cutout (Standard)	115502	115504	115498	115500
Lower Body without Cutout	115397	115398	115399	115400
Upper Leg Section	115512	115513	115510	115511
Lower Leg Section	116985	116986	116987	116988

> Replacement Mattresses

DENYER XRT 5000 OPERATING TABLE MATTRESS



	Standard series black 50mm	Standard series black 75mm	Comfort series black 50mm	Comfort series black 75mm
Three Section Table Pad Set with Cutout	115205	115206	115120	115121
Three Section Table Pad Set without Cutout	115207	115208	115122	115123
Mid Section with Cutout (Standard)	115677	115678	115675	115676
Mid Section without Cutout	115672	115674	115668	115670
Head Section	115671	115673	116458	115669
Leg Section	115681	115667	115679	115680

DENYER XRT 4000 OPERATING TABLE MATTRESS



	Standard series black 50mm	Standard series black 75mm	Comfort series black 50mm	Comfort series black 75mm
Three Section Table Pad Set with Cutout	115137	115222	115140	115221
Three Section Table Pad Set without Cutout	115135	115220	115134	115219
Mid Section with Cutout (Standard)	115384	115386	115380	115382
Mid Section without Cutout	115383	115385	115379	115381
Head Section	115388	115389	115394	115387
Leg Section	115392	115393	115390	115391

DENYER XRT 3000 OPERATING TABLE MATTRESS



	Standard series black 50mm	Standard series black 75mm	Comfort series black 50mm	Comfort series black 75mm
Three Section Table Pad Set with Cutout	115133	115218	115132	115217
Three Section Table Pad Set without Cutout	115131	115216	115130	115215
Mid Section with Cutout	115370	115372	115366	115368
Mid Section without Cutout	115369	115371	115365	115367
Head Section	115395	115396	115373	115374
Leg Section	115377	115378	115375	115376

DENYER XRT 2000 OPERATING TABLE MATTRESS



	Standard series black 50mm	Standard series black 75mm	Comfort series black 50mm	Comfort series black 75mm
Three Section Table Pad Set with Cutout	115127	115214	115213	115211
Three Section Table Pad Set without Cutout	115126	115212	115128	115129
Mid Section with Cutout	115370	115372	115366	115368
Mid Section without Cutout	115369	115371	115365	115367
Head Section	115359	115360	115357	115358
Leg Section	115363	115364	115361	115362

> Replacement Mattresses

ESCHMANN T20 OPERATING TABLE MATTRESS



	Standard series black 50mm	Standard series black 75mm	Comfort series black 50mm	Comfort series black 75mm
Three Section Table Pad Set with Cutout (Standard)	115103	115187	115102	115201
Three Section Table Pad Set without Cutout	115101	115185	115100	115186
Head Section	115524	115525	115522	115523
Mid Section with Cutout (Standard)	115519	115521	115515	115517
Mid Section without Cutout	115518	115520	115514	115516
Leg Section	115528	115529	115526	115527

ALM UNIVERSIS 6090 OPERATING TABLE MATTRESS



	Standard series black 50mm	Standard series black 75mm	Comfort series black 50mm	Comfort series black 75mm
Four Section Table Pad Set with Cutout (Standard)	115145	115230	115144	115229
Four Section Table Pad Set without Cutout	115143	115228	115142	115227
Head Section	115420	115421	115418	115419
Upper Body Section	115414	115416	115410	115412
Lower Body Section with Cutout (Standard)	115354	115356	115350	115352
Lower Body without Cutout	115353	115355	115295	115351
Leg Section	115423	115425	115422	115423

ESCHMANN J & M SERIES OPERATING TABLE MATTRESS



	Standard series black 50mm	Standard series black 75mm	Comfort series black 50mm	Comfort series black 75mm
Three Section J Series Table Pad Set with Cutout (Standard)	115111	115195	115110	115194
Three Section J Series Table Pad Set without Cutout	115108	115193	115109	115192
Mid Section J Series with Cutout (Standard)	115431	115433	115247	115429
Mid Section J Series without Cutout	115430	115432	115426	115428
Three Section M Series Table Pad Set with Cutout (Standard)	115115	115198	115114	115200
Three Section M Series Table Pad Set without Cutout	115113	115197	115112	115199
Mid Section M Series with Cutout (Standard)	115463	115465	115459	115461
Mid Section M Series without Cutout	115462	115464	115458	115460
Head Section	115436	115437	115434	115435
Leg Section	115440	115441	115438	115439

DENYER MAJOR OPERATING TABLE MATTRESS



	Standard series black 50mm	Standard series black 75mm	Comfort series black 50mm	Comfort series black 75mm
Three Section Table Pad Set without Cutout	115209	115210	115124	115125
Mid Section without Cutout	115579	115580	115577	115578
Head Section	115475	115476	115473	115474
Leg Section	115479	115480	115477	115478

> General Accessories

HAND CONTROLS

- Other models available on enquiry.

CODE:

112971	777 (Rectangular socket)
112972	777 (Round Socket)
112670	3080/3085
112701	5601
112699	5801
112697	3600B
112700	6701
114211	3003
111590	Skytron Infra-red
116264	CMAx 4085



Require a repair or replacement PARTS? Call customer care on 1800 75 93 93.

ACCESSORY STORAGE TROLLEY

- Stainless steel construction.
- Four swivel castors.
- Specify table and rail size with enquiry.

CODE:

111506



CHARGE CORDS

- 3 metre length.

CODE:

111538



UROLOGY DRAIN PAN

- Can be manufactured for most makes and models of tables.
- Sold complete with tray strainer and hose.

CODE:

111539



UROLOGY BRACKET SET

- Drain system that fixes to the operating table via the side rails.
- Requires disposable pouch (115156).
- Specify table make and model.

CODE:

SIZE:

115165	A Rail
117032	B Rail
117033	D Rail
117034	E Rail
115166	Disposable Pouch



> General Accessories

MAYFIELD ADAPTOR

- Adaptor to suit Mayfield head frame to operating table.
- Slides into head or leg receptacles.
- Specify table make and model with order.
- Adaptor appearance may vary from image.

CODE:
111534



MAYFIELD ADAPTOR

- Adaptor to fit Mayfield head frame to operating table.
- Slides over side rails.
- Locks securely in place with wrist screws.
- Suits A, B and E rail operating table.

CODE:
111535



CARBON FIBRE IMAGING EXTENSION

- To suit Skytron 3600B and 6700B operating tables.
- Requires 50mm pad (111843).

CODE: SIZE:
111841
111843 Pad 50mm
117035 Pad 75mm



TELESCOPIC LEG SUPPORT

- Stainless steel and aluminium construction.
- 560 – 1050mm travel.
- Size 16 round post attachment.

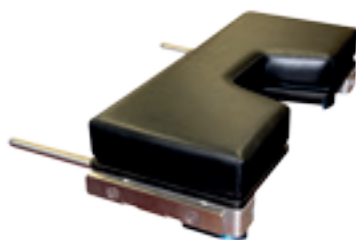
CODE:
111505



PERINEAL EXTENSION

- Specify table make and model.

CODE: SIZE:
111559
111557 Pad 50mm
111558 Pad 75mm



INSTRUMENT TRAY

- Stainless steel construction.
- Mounts to table using one round post clamp.
- Ball joint for easy positioning.

CODE: SIZE:
111526 15
111527 16



FOOT CONTROLS

- Other models available on enquiry.

CODE:
111524 3080/3085
111521 5801*
117048 3600B*

*Specify functions required.



PERINEAL CUTOUT FILLER

- Fits over gynae cutout to provide support when not in use.
- To suit Skytron, Hipac, Steris, Amsco tables.

CODE:
112138 Skytron
112140 Steris



> General Accessories

PATIENT SLIDE

- Designed to reduce effort required when moving patients between beds and trolleys.
- Reduces the risk of staff back injuries.

CODE: **SIZE:**

113581 Patient Slide XL
840mm x 560mm

111592 Patient Slide XLT



ROLLERBOARD

- Assists with transferring patients from one surface to another with minimal effort.
- Aluminium rollers on bearings.
- Easy to clean.

CODE: **SIZE:**

114641 1700mm x 370mm



ROBERTS WRIST TRACTION DEVICE

- Spring loaded hand traction device.
- Includes two reusable arm straps (111322).
- Requires finger traps.

CODE:

111322

113663 Straps



MALLEABLE LEAD HANDS

- Lead hands designed to position patient fingers during arm or hand surgery.

CODE:

111321



SIDE RAIL KIT

- Set of side rails supplied and installed to change the rail size of your table.
- All sizes available to suit any make/model of table.

CODE:

111591



ANTI FATIGUE GELPRO FLOOR MATS

- Anti fatigue floor mats for use during long procedures.

CODE: **SIZE:**

114077 460mm x 610mm (Small)

114078 510mm x 810mm (Medium)

114079 510mm x 1220mm (Large)



> Gel Pressure Care Products

3 PIECE TABLE PAD SET

- Set includes 111730, 111731 and 111648.

CODE: 111729 **SIZE:** 10.89kg



3/4 TABLE PAD WITH NO CUTOUT

CODE: 111647 **SIZE:** 1170mm x 508mm x 13mm
7.7kg



3/4 TABLE PAD WITH CUTOUT

CODE: 111646 **SIZE:** 1170mm x 508mm x 13mm
7.7kg



FULL TABLE PAD

CODE: 111645 **SIZE:** 1829mm x 508mm x 13mm
12.7kg



TABLE PAD FOOT SECTION

CODE: 111648 **SIZE:** 508mm x 508mm x 13mm
3.6kg



TABLE PAD FOOT SECTION WITH CUTOUT

CODE: 111644 **SIZE:** 508mm x 508mm x 13mm with cutout
2.73kg



TABLE PAD TORSO SECTION

CODE: 111731 **SIZE:** 1003mm x 508mm x 13mm
6.8kg



TABLE PAD HEAD SECTION

CODE: 111730 **SIZE:** 508mm x 229mm x 13mm
1.36kg



> Gel Pressure Care Products

CONCAVE ARMBOARD PAD

- Contoured for multi direction support.

CODE:	SIZE:
111495	530mm x 150mm x 50mm 3.6kg (Large)
111496	410mm x 150mm x 50mm 2.7kg (Small)



DURABOARD PAD

- Use on standard arm board extensions. Protects hand, forearm, elbow and bicep.

CODE:	SIZE:
111488	660mm x 152mm x 10mm 1.4kg
111489	381mm x 152mm x 10mm 1.4kg



ELBOW PAD

- Positions and cradles the elbow to relieve pressure and stress on the Ulnar Nerve.
- Sold individually.

CODE:	SIZE:
111494	83mm x 38mm x 19mm 0.45kg



ARMBOARD PAD

- Use on standard arm board extensions.
- Protects hand, forearm, elbow and bicep.

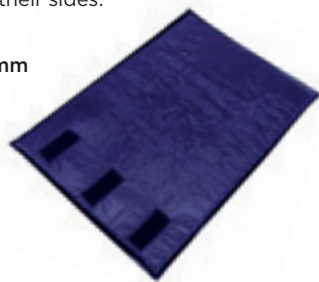
CODE:	SIZE:
111486	381mm x 102mm x 6mm 0.45kg (Small)
111487	635mm x 127mm x 6mm 0.9kg (Large)



ULNAR/BRACHIAL PROTECTOR W/HOOK & LOOP

- Protects the forearm, wraps around the patients arm and secured with hook and loop.
- Helps to prevent ulner nerve damage when patient's arms are tucked to their sides.

CODE:	SIZE:
111490	457mm x 33mm x 6mm 1.4kg



OVAL ULNAR/BRACHIAL PROTECTOR W/HOOK & LOOP

- Protects elbow and is secured with hook and loop.
- Allows full view of arm.

CODE:	SIZE:
111491	400mm x 152mm x 13mm 0.45kg



ARM AND LEG TOBOGGAN PAD

- Replacement Pad.

CODE:	SIZE:
111492	432mm x 191mm x 10mm 0.9kg



HAND PROTECTOR WITH VELCRO®

- Encloses hand and secures with Velcro® straps.

CODE:	SIZE:
114660	152mm x 203mm 1.1kg



> Gel Pressure Care Products

BARIATRIC KNEE CRUTCH PAD

CODE: SIZE:

111499 Bariatric Knee Crutch Pad
279mm x 229mm x 25mm 1.8kg (Small)
Small size allows flexibility in a variety of procedures.

111500 Bariatric Knee Crutch Pad
432mm x 279mm x 25mm 2.7kg (Medium)
Protects patients when in the lateral position, also protects heels, elbows and kidneys.

111501 Bariatric Knee Crutch Pad
508mm x 508mm x 25mm 7.3kg (Large)
Use this pad to offer highly versatile protection.
Can be used with urology stirrups.



CLAM SHELL HEEL PROTECTOR

- Place the patient's foot in the pad to protect the heel.
- Easy to use and clean.
- Uses hook and loop to secure the pad around the foot.
- Sold individually.

CODE: SIZE:

111594 0.9kg



HEEL CUP

- Holds the foot securely and protects the heel and Achilles Tendon area.
- Sold individually.

CODE: SIZE:

111595 0.9kg



KNEE CRUTCH PAD

- Protects patients when in the lateral position, also protects heels, elbows and kidney.
- Use with crutch type stirrups, paediatric procedures or other knee setups.

CODE: SIZE:

111677 279mm x 229mm x 10mm
0.9kg (Small)

111678 432mm x 279mm x 6mm
1.4kg (Medium)

111679 508mm x 508mm x 13mm
3.6kg (Large)

111680 688mm x 279mm x 13mm
2.7kg (X-Large)



LITHOTOMY BOOT - BLACK BOOT ALLEN STYLE (PAIR)

- Gel pads designed to specifically fit the Allen Boots.

CODE: SIZE:

111596 Small 2.7kg

111597 Large 3.6kg



LITHOTOMY LEG HOLDER STIRRUP PAD

CODE: SIZE:

111600 710mm x 50mm 2.7kg (Pair)

111599 710mm x 50mm 1.3kg 1.3kg (One)



GEL LITHOTOMY POLE STRAPS

CODE: SIZE:

111601 318mm x 47mm 10mm 1.8kg (Pair)

111602 440mm x 47mm 10mm 2.7kg (Pair)



> Gel Pressure Care Products

FRACTURE TABLE FOOT PAD

- Use with fracture table foot holders and other stands.

CODE: 111598 **SIZE:** 305mm x 10mm x 6mm 0.9kg



CONTOURED HEAD PAD

CODE: 111676 **SIZE:** 180mm x 180mm x 80mm
1.6Kg (32mm contoured)



DONUT HEAD PAD

- Protects the head during long procedures, elevates and cradles the neck.

CODE: 111603 **SIZE:** 203mm x 50mm x 50mm 1.36kg (Adult)
111604 140mm x 57mm x 32mm 0.9kg (Paediatric)
111605 89mm x 19mm 0.45kg (Neo-Natal)
111612 203mm x 76mm x 76mm 2.27kg (Bariatric)



LATERAL HEAD PAD WITH CENTER DISH

- Reduces pressure and protects your patients ear, jaw and side of the face.

CODE: 111615 **SIZE:** 254mm x 229mm x 25.4mm
1.8kg (Adult)
111675 127mm x 100mm x 25.4mm
0.45kg (Neo-Natal)
111673 178mm x 152mm 25.4mm
0.45kg (Paediatric)



HORSESHOE HEAD PAD

CODE: 111606 **SIZE:** 203mm x 76mm x 45mm
1.4kg (Adult)
111607 83mm x 38mm x 19mm
0.1kg (Neo-Natal)
111608 140mm x 57mm x 32mm
0.45kg (Paediatric)
111611 203mm x 76mm x 76mm
2.27kg (Bariatric)



SUPINE HEAD PAD WITH CENTER DISH

- This self centering dish conforms to the patients head while offering support.

CODE: 111614 **SIZE:** 254mm x 229mm x 57mm
2.7kg (Adult)
111674 127mm x 100mm x 51mm
0.9kg (Neo-Natal)
111672 178mm x 152mm x 51mm
0.9kg (Paediatric)



RICHARD TYPE HEAD REST (SIDE OR SUPINE)

- Improve comfort and head stability for when patients is on the side or supine positioning.

CODE: 111613 **SIZE:** 229mm x 203mm x 7.6mm
2.3kg



SUPINE HEAD REST (FACE UP)

- This pad supports patient's head for most supine positions.
- For adult and paediatric use.

CODE: 111610 **SIZE:** 6.35kg



PRONE HEAD REST (FACE DOWN)

- This head positioner allows you to position the patient with respiration tubes in place.
- The unique design provides superior head control and stability.
- For adult and paediatric use.

CODE: 111609 **SIZE:** 6.35kg



> Gel Pressure Care Products

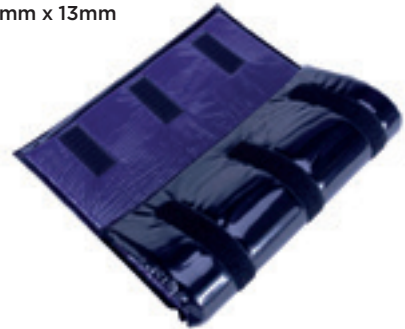
CONTOURED CHEST ROLL

CODE:	SIZE:
114120	300mm x 160mm x 125mm 6kg (Small)
114121	400mm x 160mm x 125mm 7.5kg (Medium)
114122	500mm x 160mm x 125mm 9.3kg (Large)



AUXILIARY ROLL COVER

CODE:	SIZE:
111716	457mm x 457mm x 13mm 1.8 kg



CHEST POSITIONERS

- Sold as a single unit.

CODE:	SIZE:
111710	711mm x 203mm x 76mm 7.9kg (Left)
111711	711mm x 203mm x 76mm 7.9kg (Right)



CHEST POSITIONERS SET (LEFT AND RIGHT)

- The contoured shape conforms to the patient's chest and shoulder.
- Sold as a set.

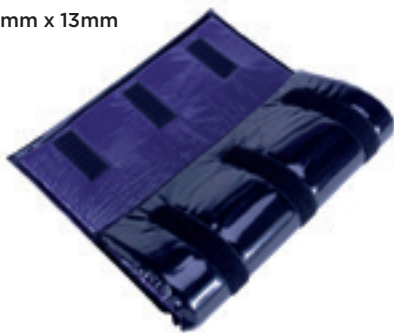
CODE:	SIZE:
111712	711mm x 203mm x 76mm 15.9kg



GEL CHEST ROLL COVER

- Held in place by hook & loop Velcro®.

CODE:	SIZE:
111715	432mm x 305mm x 13mm 1.8kg



FLAT BOTTOM CHEST ROLL

- Used to protect the patients chest while in the prone position. They also can be used for a variety of positioning needs including oblique and lateral stabilisation.

CODE:	SIZE:
111702	305mm x 101mm x 101mm 2.7kg
111703	306mm x 152mm x 152mm 5.9kg
111704	406mm x 101mm x 101mm 3.6kg
111705	406mm x 152mm x 152mm 7.7kg
111706	508mm x 101mm x 101mm 4.5kg
111707	508mm x 152mm x 152mm 9.6kg



GRADUATED THORACIC POSITIONER

- This graduating size pad can be used in many procedures where full chest extension is required.

CODE:	SIZE:
111713	356mm x 229mm x 63mm 3.2kg



TRAPEZOID POSITIONER

CODE:	SIZE:
111717	265mm x 170mm x 85mm 2.4kg

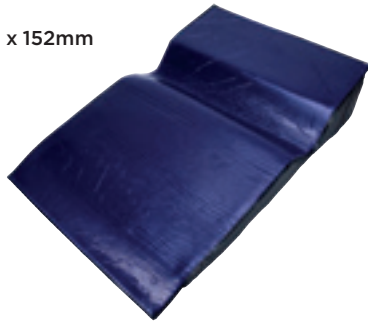


> Gel Pressure Care Products

LATERAL POSITIONER

- Protects the shoulder and arm while in the lateral position.

CODE: **SIZE:**
111714 711mm x 495mm x 152mm
4.5kg



PATIENT POSITIONER

CODE: **SIZE:**
111708 254mm x 114mm x 51mm 0.9kg (Small)
111709 356mm x 127mm x 57mm 1.8kg (Large)



SAND BAGS

CODE: **SIZE:**
111718 152mm x 38mm 0.45kg
111719 152mm x 9mm 0.45kg
111720 203mm x 38mm 0.7kg
111721 254mm x 38mm 0.7kg
111722 305mm x 38mm 1.8kg
111723 254mm x 114mm x 51mm 0.9kg
111724 305mm x 114mm x 51mm 1.1kg
111725 356mm x 127mm x 63mm 1.8kg
111726 406mm x 305mm x 38mm 4.5kg



ANDREWS FRAME KNEE PAD

- Use with the Andrews Frame to help reduce pressure on the knees.

CODE: **SIZE:**
111693 559mm x 406mm x 25mm
5.9kg



BARIATRIC LAP BELT PAD (MEDIUM)

- Use with restraint straps for added protection.

CODE: **SIZE:**
111497 914mm x 152mm x 6mm
1.35kg



BARIATRIC LAP BELT PAD (LARGE)

CODE: **SIZE:**
111498 1219mm x 178mm x 6mm
1.35kg



> Gel Pressure Care Products

BASSINET PAD

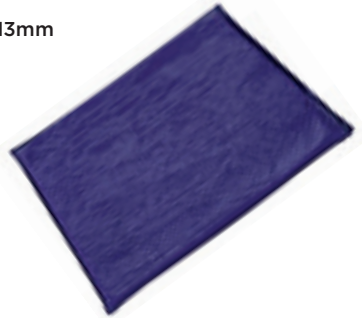
CODE: 111689 **SIZE:** 660mm x 305mm x 13mm
2.7kg



ISOLETTE PAD

- To be used on Isolette beds.

CODE: 111690 **SIZE:** 660mm x 406mm x 13mm
2.7kg



PAEDIATRIC PAD SMALL

CODE: 111688 **SIZE:** 279mm x 229mm x 9.5mm
0.9kg



PAEDIATRIC PAD MEDIUM

CODE: 111687 **SIZE:** 432mm x 279mm x 6mm
1.4kg



MAYO STAND COVER

- Prevents nerve damage while limb are positioned using a Mayo Stand.

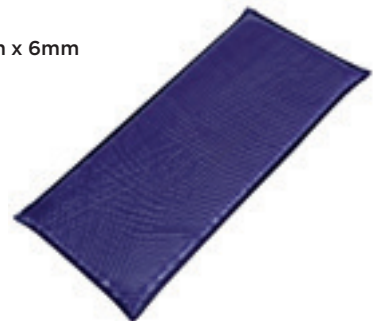
CODE: 111695 **SIZE:** 533mm x 470mm x 16mm
3.6kg



EPIDURAL POSITIONING DEVICE ARM REST PAD

- To be used with the Epidural Positioning Device.
- Place on the arm portion to help hand and arm pressure.

CODE: 111694 **SIZE:** 330mm x 127mm x 6mm
0.45kg



SAMPLE PAD

CODE: 111697 **SIZE:** 127mm x 100mm
140g



REPAIR PATCH KIT

- Easily repairs cuts, punctures and cracks.
- Four patches per kit.

CODE: 111696 **SIZE:** 100mm x 100mm



> Gel Pressure Care Products

SUMMERVILLE PAD

CODE: 111700 **SIZE:** 304mm x 304mm x 6mm
4.4kg



TABLE PEG BOARD PAD

CODE: 114114 **SIZE:** 800mm x 500mm x 12.5mm



WILSON FRAME PADS

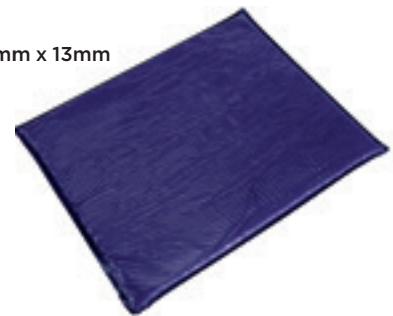
CODE: 111691 **SIZE:** 737mm x 254mm x 13mm
5.4kg (Each)
CODE: 111692 **SIZE:** 737mm x 254mm x 13mm
5.4kg (Pair)



TABLE HIP PAD

- To be used with most procedures where hip protection is needed.

CODE: 111701 **SIZE:** 508mm x 508mm x 13mm
3.6kg



PRONE HEADREST WITH INTERCHANGEABLE BASE

- Includes 3 different size bases.

CODE: 116017 **SIZE:** 270mm x 229mm
4.5kg



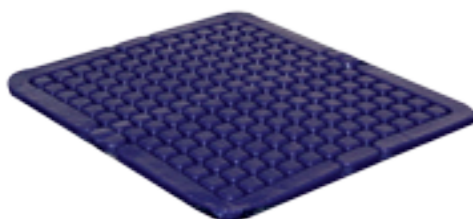
SACRAL PAD

CODE: 116968 **SIZE:** 228mm - 76mm x 178mm x 12.7mm
0.5kg



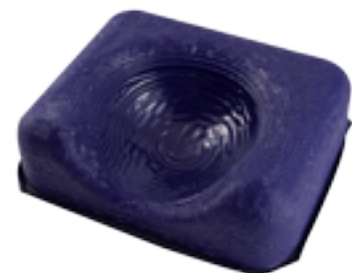
CUBE PAD

CODE: 113596 **SIZE:** 457mm x 406mm x 12.7mm
2.3kg



OPHTHALMIC HEADREST

CODE: 116188 **SIZE:** 304mm x 254mm x 98mm
5.5kg



> Product Index

A

Accessory Storage Trolley	47
Adhesive Backed Velcro®	29
Adjustable Anaesthetic Screen Support	39
Adjustable Laminectomy Bridge	36
All Rubber table Restraint	40
ALM Universis 6040	
Operating Theatre Table Mattress	46
Altima Leg Positioners	20
Amsco Steris 3080/3085SP	
Operating Theatre Table Mattress	42
Amsco Steris CMAX/4085	
Operating Theatre Table Mattress	42
Anaesthetic Pillow	39
Anaesthetic Screen Support	39
Andrews Frame Knee Pad	55
Ankle Support	13
Anti-Fatigue Gel Pro Floor Mats	49
Arm and Leg Toboggan Pad	51
Arm Support - Carter Braine	28
Arm Support - J	28
Arm Support - Lateral	28
Arm Support - Prone	27
Arm Support - Right Angle	28
Arm Support - Slip In	28
Arm Table - Hourglass	27
Arm Table - Mobile	27
Arm Table - Surgical	27
Arm Table Guard	28
Armboard - Elevating Rotational	26
Armboard - Lift Adjust Locking	25
Armboard - Locking	25
Armboard - Multi Position	28
Armboard - Standard	26
Armboard - Wide	27
Armboard Restraint Strap	25, 29, 40
Auxiliary Roll Cover	54, 17

B

Bariatric Knee Crutch Pad	52, 38
Bariatric Lap Belt Pad	55, 38
Bassinet Pad	56
Bi Clamp	5, 6, 7, 8
Bradbury Head Support	23
Buttock Support	32

C

Cable Strap – Velcro	29
Carbon Fibre Imaging Extension	48
Cardiac Head Cage	39
Carter Braine Arm Support	28
Charge Cords	47
Chest Positioners	54, 17
Chest Positioners Set (left and Right)	54, 17
Chest Roll Cover with Hook & Loop	54, 17
Clam Shell Heel Protector	52, 22
Clamp – Clark Socket	5
Clamp – Multi	5, 6, 7, 8
Clamp – Radial Bi	5, 6, 7, 8
Clamp – Rectangular Bar	5, 6, 7, 8
Clamp – Rotary	5, 6, 7, 8
Clamp – Rotary Sure	5
Clamp – Round Bar	5, 6, 8
Clamp – Side Rail Extension	5, 6, 7, 8
Clamp – Stirrup	5, 6, 7, 8
Clamp – Traction	9
Clamp – Tri	5
Clamp – Universal Bar	9
Clamp – Universal Rotary	9
Clamp – Universal Round Bar	5
Clamp on Rail	9
Clark Socket Clamp	5
Concave Armboard Pad	25, 51
Contoured Chest Roll	54
Contoured Head Pad	24, 53
Contoured Knee Pad	53, 22
Cube Pad	5

Curved Lateral Support	10
Curved Support	10

D

Deluxe Lateral Positioner Set	12
Denyer Major Operating Theatre Table Mattress	46
Denyer XRT 2000 Operating Theatre Table Mattress	45
Denyer XRT 3000 Operating Theatre Table Mattress	45
Denyer XRT 4000 Operating Theatre Table Mattress	45
Denyer XRT 5000 Operating Theatre Table Mattress	45
Direct on Table Width Extender Set	37
Disposable Anaesthetic Pillow	39
Dixie Pillow	24
Donut Head Pad	53, 23
Donut Head Ring	23
Duraboard Pad	51

E

Economy Armboard Restraint	25, 29, 40
Elbow Pad	51, 26
Elevating Rotational Armboard	26
Elite Positioner	36
Epidural Positioning Device Arm Rest Pad	56
Eschmann J&M Series	
Operating Theatre Table Mattress	46
Eschmann J3	
Operating Theatre Table Mattress	44
Eschmann MR	
Operating Theatre Table Mattress	44
Eschmann RX500	
Operating Theatre Table Mattress	44
Eschmann T20	
Operating Theatre Table Mattress	46
Extra Long Patient Restraint Strap	38, 40
Extra Wide Mattress Set	37
Eve Surgery Pillow	24

F

Femoral/Popliteal Board	21
Flat Bottom Chest Roll	54, 17
Foam Laminectomy Rest	36
Foot Controls	48
Foot Rest	38, 21
Foot Stock	22
Form-A-Screen	39
Fracture Table Foot Pad	53, 22
Full table pad	50

G

Gel 3 Piece table pad set (amscso)	50
Gel 3/4 Table Pad with cutout	50
Gel 3/4 Table Pad with no cutout	50
Gel Andrews Frame Knee Pad	55
Gel Arm and Leg Toboggan Pad	51
Gel Armboard Pad	51
Gel Auxiliary Roll Cover	17, 54
Gel Bariatric Donut Head Pad	38, 53
Gel Bariatric Horseshoe Head Pad	38, 53
Gel Bariatric Knee Crutch Pads	38, 52
Gel Bariatric Lap Belt Pad	38, 55
Gel Bassinet Pad	56
Gel Candy Cane Stirrup Pad	52
Gel Chest Positioner	17, 35, 54
Gel Chest Positioners Set (left and Right)	54, 17
Gel Chest Roll Cover	17, 54
Gel Clam Shell Heel Protector	22, 52
Gel Concave Armboard	25, 51
Gel Contoured Chest Roll	54
Gel Contoured Knee/Calf Positioner	22
Gel Cube Pad	57
Gel Donut Head Pad	23, 53
Gel Duraboard Pad	51
Gel Elbow Pad	26, 51

10	Gel Epidural Positioning Device	
10	Arm Rest Pad	56
	Gel Flat Bottom Chest Rolls	17, 54
	Gel Fracture Table Foot Pad	22, 53
12	Gel Full table pad	50
	Gel Graduated Thoracic Positioner	54, 17
46	Gel Hand Protector	26, 51
	Gel Heel Cup	22, 52
45	Gel Horseshoe Head Pad	23, 53
	Gel Isolette Pad	56
45	Gel Knee Crutch Pad	19, 52
	Gel Lateral Head Pad with Centre Dish	24, 53
45	Gel Lateral Positioner	17, 55
	Gel Lithotomy Boot-Black Boot Allen Style	52
45	Gel Lithotomy Leg Holder Stirrup Pad Set	19, 52
37	Gel Lithotomy Pole Straps	52, 19
39	Gel Locking Armboard Pad	25
24	Gel Mayo Stand Cover	56
23	Gel Ophthalmic Head Rest	57
51	Gel Oval Ulnar/Brachial Protector	26, 51
	Gel Patient Positioner	17, 55
	Gel Paediatric Pad (small, medium)	56
	Gel Pro Anti-Fatigue Floor Mats	49
40	Gel Prone Head Rest	53, 23
26	Gel Prone Head Rest	
26	with Interchangeable Base	57
36	Gel Prone/Supine Head Rest	23, 53
56	Gel Rectangular Ulnar/Brachial Protector	26, 51
	Gel Repair Patch Kit	56
46	Gel Richard Type Head Rest	24, 53
	Gel Sacral Rest	57
44	Gel Sample Pad	56
44	Gel Sandbags	16, 55
	Gel Summerville Pad	57
44	Gel Supine Head Pad with Center Dish	24, 53
	Gel Table Hip Pad	57
46	Gel Table Pad-foot section	50
40	Gel Table Pad-foot section with cutout	50
37	Gel Table Pad-head section	50
24	Gel Table Pad-torso section	50
	Gel Table Peg Board Pad	57
	Gel Trapezoid Positioner	17, 54
21	Gel Wilson Frame Pad	35
4, 17	Gillespie Pillow	36
76	Graduated Thoracic Positioner	17, 54

H

Hand Control	47
Hand Protector	51, 26
Head Pad – Contoured	24, 53
Head Rest – Horseshoe	23
Head Ring – Donut	23
Head Section – Ophthalmic	24
Head Support – Bradbury	23
Heel Cup	52, 22
Hip Rest	32
Hip Rest Pad	32
Hipac 5801	
Operating Theatre Table Mattress	42
Hipac Orthopaedic Positioning System	30
Hipac Orthopaedic Positioning System	31
Horseshoe Head Attachment	24
Horseshoe Head Pad	53, 23
Horseshoe Head Rest	23
Hourglass Arm Table	27

Image 4000	
Operating Theatre Table Mattress	43
Image 4000ST	
Operating Theatre Table Mattress	43
Image 5000 (TransX)	
Operating Theatre Table Mattress	44
Image 777 (short)	
Operating Theatre Table Mattress	43
Image 777	
Operating Theatre Table Mattress	43
Instrument Tray	48

> **Product Index**

 Operating tables and accessories

> General Information

How to Order

Official purchase orders must be placed via phone, fax, email or post. Contact details are as follows:

Email: info@hipac.com.au

Post: PO Box 797 GOULBURN NSW 2580

Phone: 1800 759 393

Fax: +61 2 4822 7733

Payment Terms

Account customers:

Net 14 days on established accounts.

Non account customers:

Payment required prior to dispatch.

Payment Options

Pay by phone:

Mastercard / Visa. Please phone 1800 759 393.



Electronic Funds Transfer:

Account Name: Hipac Medical

Bank: Westpac, Goulburn NSW

BSB: 032-721

Account No: 19-6492

Please fax or email confirmation to:

Fax: +61 2 4822 7733

Email: accounts@hipac.com.au

Product Changes

Hipac reserves the right to make changes in design, specifications, colours and models for the improvement of any product without notice. Images in this catalogue are for display purposes only and may not reflect the exact appearance of the product.

Shipping & Claims

Goods are shipped via Hipac's preferred logistics provider whenever possible. Charges will be prepaid and included on the invoice, unless otherwise arranged. Merchandise should be inspected on receipt and contact made with Customer Care regarding any damage or discrepancies. Damaged shipments must be noted when signing for packages and damaged packaging retained.

14 day return policy

The Hipac return policy is very simple, customer satisfaction is our goal. If your product is received defective, not as you ordered, or does not satisfy your requirements, Hipac will replace the equipment with a like for like replacement or, if required, credit the value of the goods. Delivery charges are the responsibility of the purchaser. All returns must have an accompanying return goods authorisation number (RGA number). Returned goods must be in new, re-saleable condition. A restocking fee may apply. Custom products are non-returnable.

Disclaimer

Hipac recommends that anyone intending to rely on or use any products displayed in this catalogue should satisfy themselves about the suitability of them for their intended use and that all applicable health and safety standards are met. No responsibility is assumed by Hipac for any incidental or consequential damages resulting from the use of any products sold by Hipac.



We're here for life.



Hipac

Dependable healthcare equipment;
maintained to exacting standards

We're here for life.

Customer Care 1800 75 93 93

The Hipac Group Pty

P: +61 2 4823 0000

F: +61 2 4822 7733

E: info@hipac.com.au

W: hipac.com.au

A: PO Box 797, 36 Long Street

Goulburn NSW 2580 AUSTRALIA

ABN 41 218 928 369