

Masonry

Landscape Product Guide



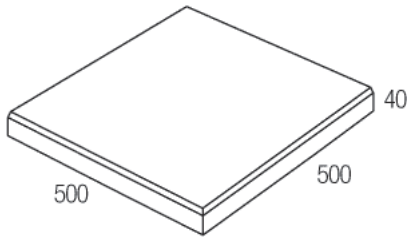
what can you build with Selkirk?

BUILD WITH

Selkirk

Sorrento Stone™

Coastally inspired “Sorrento Stone” looks like it sounds. Richly textured for less slip resistance resulting in a stunning ground effect that will turn heads.



Standard: 4 units per m2



Sandstone



Bluestone



Mist



Recommended for pedestrian use only (paths, patios and courtyards).

These pavers are not suitable for driveways unless adhered to a suitable concrete slab with an approved adhesive or wet bed method.

Number per tonne 55

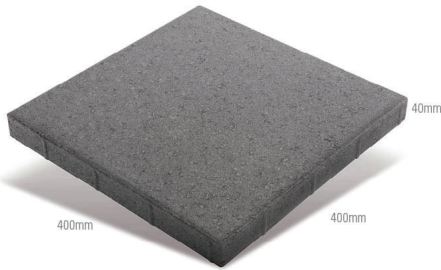
Units per pallet 48

Weight per unit (kg) 18

Flagstone™

This large, square format paving range features simple, clean lines to enhance everyday living.

Available in 400 x 400 x 40 - Standard 400: 6.25 units per m2



Charcoal



Oatmeal



Mocha



Sunstone



Terracotta



Recommended for pedestrian use only (paths, patios and courtyards).

These pavers are not suitable for driveways unless adhered to a suitable concrete slab with an approved adhesive or wet bed method.

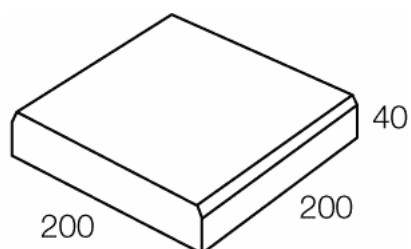
Number per tonne 74

Units per pallet 108

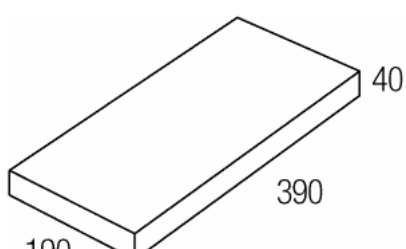
Weight per unit (kg) 13.5

Arenapave™ and Urbanpave™

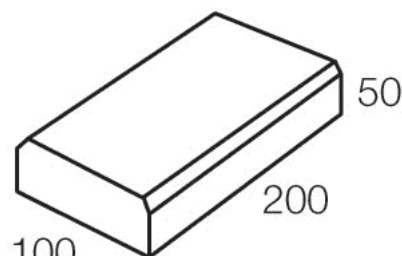
Standard small format pavers are a practical, affordable, and versatile choice offering easy installation and maintenance.



Arenapave™ 200/40
2 bevel. 25 units per m2



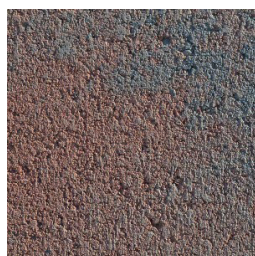
Arenapave™ 190/40
Square edge. 13.5 units per m2



Urbanpave™
2 bevel. 50 units per m2



Bluestone



Clinker Red
Arenapave 200 x 200
only



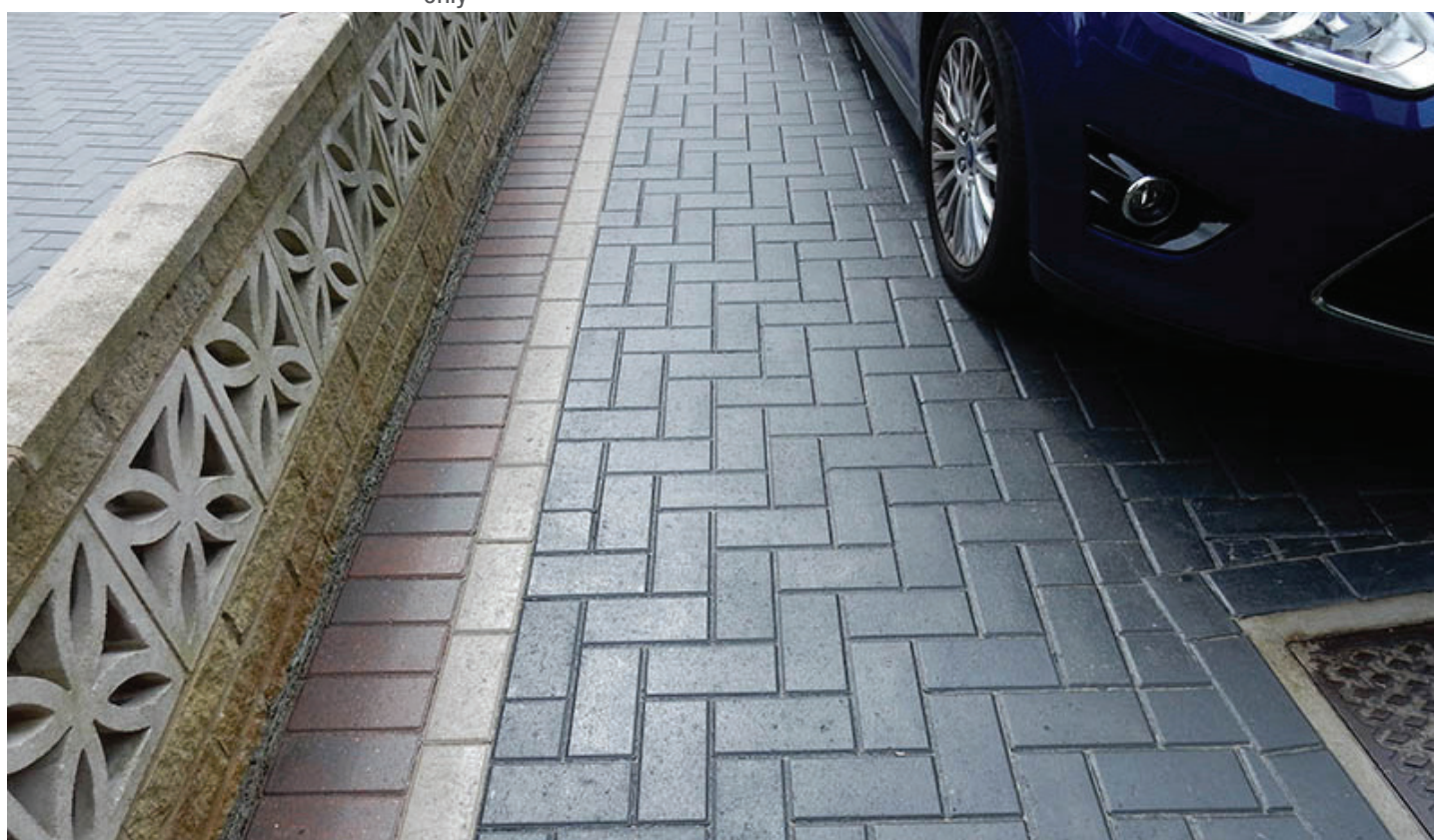
Oatmeal



Sandune



Warmstone



Arenapave is recommended for pedestrian use only (paths, patios and courtyards).

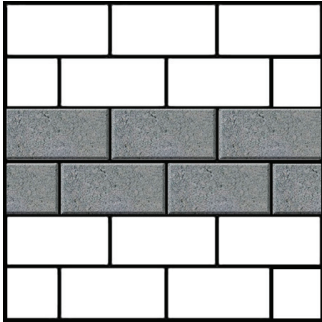
These pavers are not suitable for driveways unless adhered to a suitable concrete slab with an approved adhesive or wet bed method.

Urbanpave is suitable for both pedestrian use and / or driveways.

Paver Name	Number per tonne	Units per pallet	Weight per unit (kg)
Urban Pave	455	750	2.2
Arenapave 200 x 200	285	450	3.5
Arenapave 190 x 390	137	216	7.3

Paving Patterns

Selkirk recommend that even pre-sealed pavers be resealed with a quality penetrating sealer following installation.



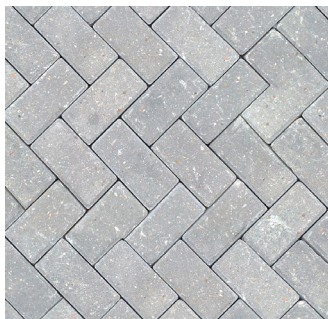
Stretcher Bond



Basketweave



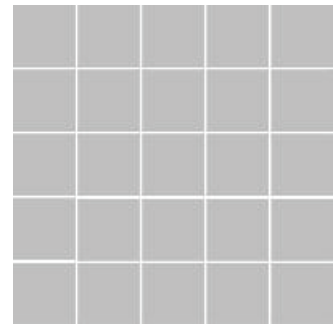
Stacked Bond 45°



Herringbone 45°



Herringbone 90°



Stacked Bond 90°



Basic Guide to Laying Pavers



Prepare the Site

Excavate the area to be paved to allow for the base layer (generally 100 - 150mm thick of stabilised crushed rock), bedding Sand (generally 30mm thick coarse washed river sand) and the paver thickness. Establish falls and level using a spirit level on the screed board. Spread the stabilised crushed rock to an even thickness and compact using a mechanical plate compactor.



Add the bedding sand

Place screed rails on stabilised crushed rock and spread bedding sand roughly between and over the rails - keep the rails. The easiest way to screed sand is to use two guides (screed rails) and a screeding board (e.g. a flat piece of timber). Establish bedding tracks with the screeding board.



Level the surface

Bed the screen rails into the bedding sand. Drag the screeding board in a sawing motion from side to side across the rails to create a firm, flat laying surface. Remove the rails, fill in the voids with bedding sand and trowel smooth.



Set the Lines

Set string lines at right angles to establish paving lines. These will help keep the joints straight for that truly professional look.



Begin the laying

Start laying along the longest straight edge of the designated area and lay whole pavers first. Leave 3-5mm between pavers to allow for jointing sand.



Cut Pavers

Cut and position part-pavers if the job requires them. Edge restraints prevent the pavers from moving.



Fill the joints

Sweep jointing sand over the finished dry paving, ensuring that all joints are full.

Sand Filled Joints

Pavers 50mm thick or greater surface to be plate compacted. Always remember to use a rubber mat or carpet beneath the plate compactor to prevent damage to the pavers.

Pavers 40mm thick or less - surface to be hand compacted with a rubber mallet.

Sealing

We recommend that all pavers should be sealed with a quality penetrating sealer following installation. Please check with a qualified trades person for advice on this process. We do not accept liability for stained or damaged pavers.

For heavy applications of paving such as crossings or driveways please refer to www.cmaa.com.au/paving for further information. This is general information and should be viewed as a guide only. We recommend you obtain professional advice on your specific paving project.

Caring for your pavers

- Sweep regularly with a stiff bristled broom to keep pavers free from debris
- For maximum protection we suggest pavers are sealed after installation with a penetrating sealer. Please check with a reputable sealing company for advice.
- Seal pavers with a penetrating sealer before grouting to avoid grout smears.
- Re-seal pavers as required paying extra attention to heavy wear areas and salt-water locations.
- During construction, cover the paved areas to protect against damage.
- Protect your pavers against possible staining from mortar, oxides, cement and rust.
- Do not use acid to clean pavers.
- Do not use high pressure cleaning apparatus' to clean pavers.
- In all cases, attempt to clean a stain before it hardens or dries.

If a stain occurs, follow some simple steps

- Assess type of stain carefully before taking action (incorrect assessment of stain can cause the stain to be more difficult to remove).
- If stain cannot be accurately assessed, conduct a trial process on a small portion of the stained area to determine most appropriate action.
- Do not use acid to remove stains under any circumstances. Refer to guide below for some stain removal solutions.

Problem	Suggested Cleaning Method
Efflorescence (white powdery deposit that occurs naturally in cement based products).	Use Environex Anti-EFF or equivalent as per manufacturers recommendation.
Leaves, bark, algae, food and wine stains	Use 10 part water to 1 part bleach, then hose down.
Chewing Gum	Freeze with dry ice and remove with a spatula
Ivy suckers	Apply a heat gun to the suckers until they go hard. Allow them to cool and dry, then scrub them off with a stiff bristled broom.





BUILD WITH

The Selkirk logo, featuring the word "Selkirk" in a white, serif font, centered within a solid red rectangular background.

To find out what you can build with Selkirk

Call 1300 650 006 or email customerservice@selkirk.com.au

You can also visit our website www.selkirk.com.au

CAMPBELLFIELD: 1596 Sydney Rd
GREENSBOROUGH: 297 Diamond Creek Rd
MORDIALLOC: 80 Governor Rd
TAYLORS LAKES: 31A Melton Hwy

Ph: 9359-6028 Fax: 9359-6911
Ph: 9434-6744 Fax: 9434-6455
Ph: 9580-1080 Fax: 9580-1732
PH: 9390-8100 Fax: 9390-9180

Product Disclaimer

Concrete Blocks, Bricks, Pavers and Retaining Wall products supplied by Selkirk are manufactured using raw materials that inherently vary in nature. Whilst all effort is made to produce uniformity in our range of products, variation in colour, texture and finish can be present. The dimensional characteristics of all products are nominal and variations in length, height and width can occur from unit to unit.

Colour variations occur from batch to batch. Colours shown are indicative only and should not be used for final selection. Products ordered should be chosen from actual samples current at the time of order and subject to availability. Samples, brochures and displays should be viewed as a guide only. Customers should ensure all delivered products are acceptable, and any concerns about products are made prior to laying.

All prices are subject to availability and can be withdrawn or varied without notice.