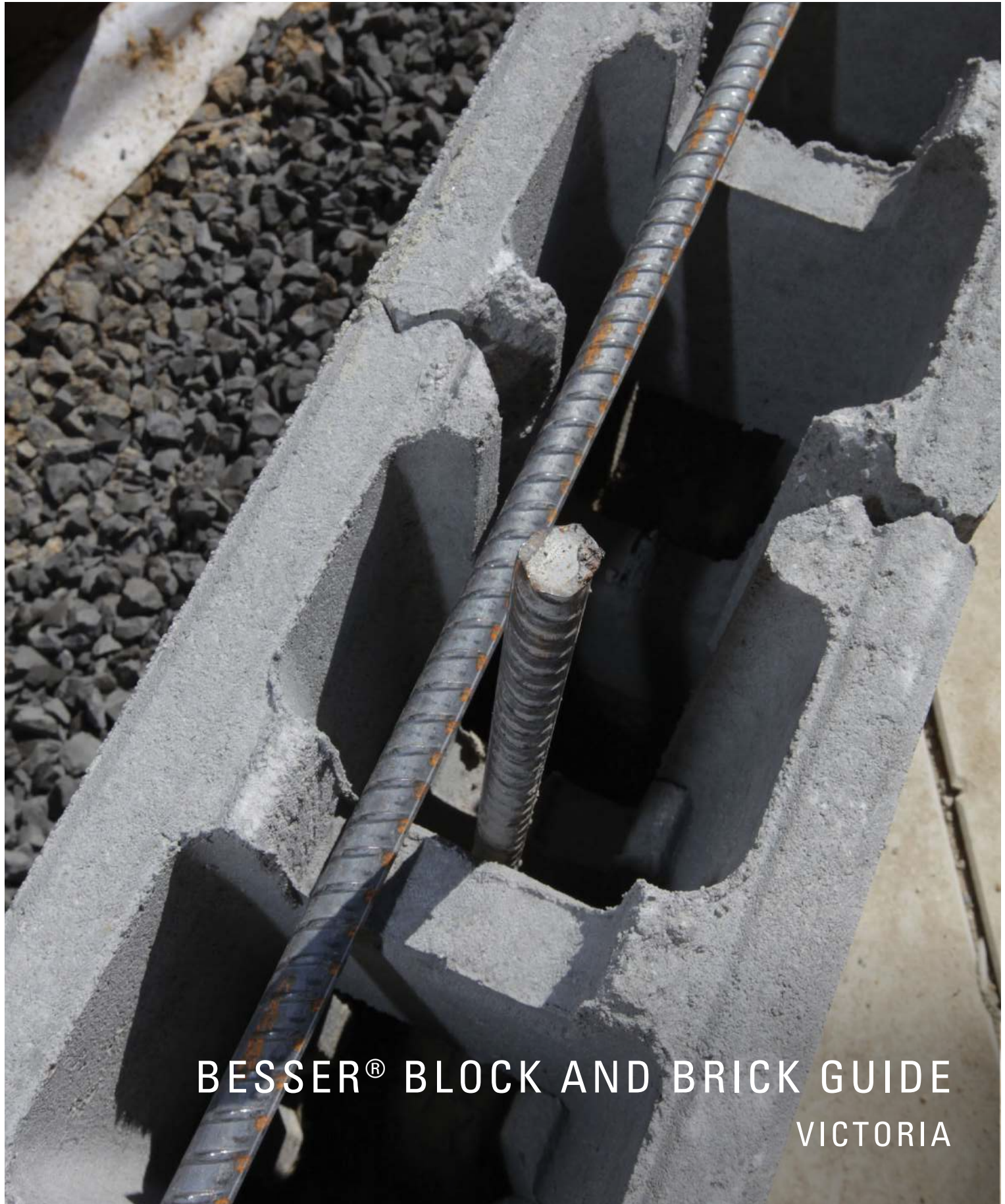


adbri MASONRY
working together



BESSER[®] BLOCK AND BRICK GUIDE
VICTORIA

Products	Type	Description	Size (mm) L x H x W	Qty. per pallet	Unit Weight (kg)	Unit per m ²	Notes
Common Brick							
	11.076	Render Brick (Solid)	230 x 76 x 110	420	3.7	50	
	11.162	Quick Brick (Solid)	230 x 162 x 110	210	8.03	25	
	11.162S	Quick Brick (Vertically Cored)	230 x 162 x 110	250	5.9	25	
Block 100 Standard Series							
	10.01	Full Length Hollow	390 x 190 x 90	180	9.7	12.5	
	1002	3/4 Length Hollow	290 x 190 x 90	192	6.36	-	
	1003	1/2 Length Hollow	190 x 190 x 90	288	4.25	-	
	1004	1/4 Length Solid	90 x 190 x 90	576	2.12	-	
	1031	Full Length Solid	390 x 190 x 90	144	12.9	12.5	
	1039	Sill Block	190 x 190 x 90	288	-	5 per L/m	
	1083	Full Length 1/2 Height Solid	390 x 90 x 90	288	5.81	25	

Note: Universal pallet layout, 15.42 x 96 units, closed one end x 24 units, closed two ends (15.01) x 24 units per pallet.

Strength and Fire Resistance Periods (FRP) varies dependant on product. All products adhere to the Australian Standards AS3700 and AS 4773. Further details of fire, thermal and acoustic properties are available in the Masonry Specification Guide.

Products	Type	Description	Size (mm) L x H x W	Qty. per pallet	Unit Weight (kg)	Unit per m ²	Notes
Block 120 Standard Series							
	12.801	Full Length Hollow	390 x 190 x 110	150	13.09	12.5	
Block 150 Standard Series							
	1542	Universal Notched Block	390 x 190 x 140	144	12	12.5	
	1502	3/4 Length Hollow	290 x 190 x 140	128	8.57	-	
	1503	1/2 Length Hollow	190 x 190 x 140	192	5.18	-	
	1504	1/4 Length Hollow	90 x 190 x 140	384	2.59	-	
	1522	340mm Corner Block	340 x 190 x 140	96	11.98	-	
	1571	Full Length 1/2 Height Hollow	390 x 90 x 140	240	6.25	25	
	15.801	Full Length Reduced Core Block	390 x 190 x 140	120	14.86	12.5	
	15.12	Bond Beam	390 x 190 x 140	120	14.49	-	
	15.83	Full Length 1/2 Height Solid Universal	390 x 90 x 140	168	10.1	25	
	15.48	H Block	390 x 190 x 140	120	13.8	-	

Note: Universal pallet layout, 15.42 x 96 units, closed one end x 24 units, closed two ends (15.01) x 24 units per pallet.

Strength and Fire Resistance Periods (FRP) varies dependant on product. All products adhere to the Australian Standards AS3700 and AS 4773. Further details of fire, thermal and acoustic properties are available in the Masonry Specification Guide.

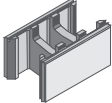
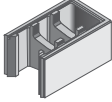
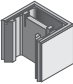
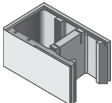
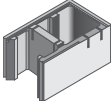
Products	Type	Description	Size (mm) L x H x W	Qty. per pallet	Unit Weight (kg)	Unit per m ²	Notes
Block 200 Standard Series							
	2042	Universal Notched Block	390 x 190 x 190	108	13.5	12.5	
	2002	3/4 Length Hollow	290 x 190 x 190	96	10.77	-	
	2003	1/2 Length Hollow	190 x 190 x 190	144	7.02	-	
	2004	1/4 Length	90 x 190 x 190	288	5.3		
	2018	Deep Lintel	190 x 390 x 190	90	14		
	2071	Full Length 1/2 Height Hollow	390 x 190 x 190	216	6.75	25	
	20.12	Bond Beam	390 x 190 x 190	90	16.1	-	
	20.96	C Block Clean Out	390 x 190 x 190	90	12.1		
	5031	Capping Unit	390 x 40 x 190	216	6.88	-	
	20.48	Single Webb H Block	390 x 190 x 190	90	16	12.5	
Block 300 Series Standard Series Double U Retaining Wall							
	30.48	Single Webb H	390 x 190 x 290	72	19.2	12.5	
	30.49	End Block	390 x 190 x 290	60	21	-	
	30.50	1/2 End Block	190 x 190 x 290	120	8.4	-	

Note: Universal pallet layout, 20.42 x 84 units, closed one end x 12 units, closed two ends (20.01) x 12 units per pallet.

Products	Type	Description	Size (mm) L x H x W	Qty. per pallet	Unit Weight (kg)	Unit per m ²	Notes
Versaloc® 150mm Series							
	59.91	Versaloc® Standard Block	400 x 200 x 150	96	14.55	12.5	
	59.92	Versaloc® End Block*	400 x 200 x 150	96	14.41	-	
	59.93	Versaloc® Half End Block*	200 x 200 x 150	192	8	-	
	59.95L	Versaloc® Lefthand Corner Block**	350 x 200 x 150	84	13.11	-	
	59.95R	Versaloc® Righthand Corner Block**	350 x 200 x 150	84	13.11	-	
Versaloc® 200mm Series							
	29.91	Versaloc® Standard Block	400 x 200 x 190	90	15.6	12.5	
	29.92	Versaloc® End Block*	400 x 200 x 190	72	17.5	-	
	29.93	Versaloc® Half End Block*	200 x 200 x 190	144	9.0	-	
	29.95L	Versaloc® Lefthand Corner Block**	390 x 200 x 190	72	17.5	-	
	29.95R	Versaloc® Righthand Corner Block**	390 x 200 x 190	72	17.5	-	
	29.99	Versaloc® Full Pier Block	400 x 200 x 400	36	25.95	-	
	29.99S	Versaloc® Half Pier Block	400 x 200 x 200	72	14.65	-	

*Stimulated vertical mortar joint on one side only.

Note: Strength and Fire Resistance Periods (FRP) varies dependant on product. All products adhere to the Australian Standards AS3700 and AS 4773. Further details of fire, thermal and acoustic properties are available in the Masonry Specification Guide.

Products	Type	Description	Size (mm) L x H x W	Qty. per pallet	Unit Weight (kg)	Unit per m ²	Notes
Versaloc® 300mm Series							
	39.91	Versaloc® Standard Block	400 x 200 x 290	60	18.8	12.5	
	39.92	Versaloc® End Block*	400 x 200 x 290	60	21	-	
	39.93	Versaloc® Half End Block*	200 x 200 x 290	120	12.47	-	
	V290	Versaloc® Lefthand Corner Block**	490 x 200 x 290	32 (16L & 16R per pallet)	17.7	-	
	V290	Versaloc® Righthand Corner Block**	490 x 200 x 290	32 (16L & 16R per pallet)	17.7	-	

*Stimulated vertical mortar joint on one side only.

Note: Strength and Fire Resistance Periods (FRP) varies dependant on product. All products adhere to the Australian Standards AS3700 and AS 4773. Further details of fire, thermal and acoustic properties are available in the Masonry Specification Guide.

Technical Information

Standards - All Adbri Masonry concrete blockwork is manufactured to AS/NZS4455.1 - Masonry Units and Segmental Pavers and tested to AS/NZS4456 - Masonry Units and Segmental Pavers/:Methods of Test. For more information on design and construction refer to CMAA document MA55.

Fire Resistance - AS3700 - Masonry Structures sets out the method for determining fire resistance of walls based on test data. It is recommended that designers calculate or check the structural adequacy, integrity and insulation for each wall configuration to ensure conformance to the Building Code of Australia (BCA). Adbri Masonry have an extensive range of bricks and blocks meeting the requirements of the BCA. Refer to the Adbri Masonry Fire and Sound brochure for more information.

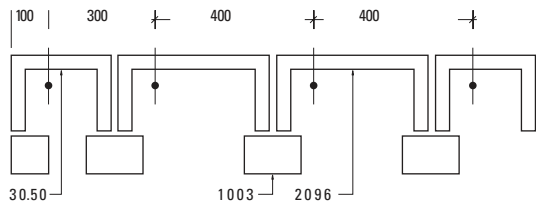
Acoustics - The statutory requirements for sound attenuation are set out in Section F5 of the BCA. The new BCA deemed-to-satisfy provisions increase the levels of airborne sound insulation and apply to wall/floor systems tested in the laboratory. These figures are $R_w + C_{tr}$ not less than 50. Adbri Masonry have a number of high performance wall systems which have been developed to accommodate the new stringent requirements imposed by the BCA, to satisfy all acoustic needs. Refer to the Adbri Masonry Fire and Sound Brochure for more information.

Control Joints - Control Joints must be incorporated in masonry as necessary to control and limit the movements referred to in AS3700 clause 2.5.2.2. Control joints should extend the full height of the wall and be spaced 8m centre for concrete units and at 6m centre for light weight units where walls are not interrupted by full height doorways or window openings.

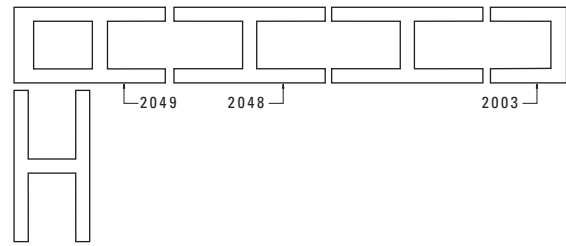
General Guidelines - All concrete blockwork should be laid dry, so covering on site is recommended. Whenever work is stopped, the tops of walls should be covered to prevent moisture entering the cores of the blocks and/or cavity. All mortar joints should be allowed to set to "thumb print" hardness before tooling. Brush away excess mortar with semi stiff brush at the end of each days work.

Cleaning - Care should be taken to keep bricks and blocks as clean as possible during laying. There are various methods of general cleaning from dry brushing, water washing and also using chemicals. For a complete listing refer to the CMAA Code MA41. When using a weak acid mixture it is recommended for cleaning down at no stronger than 1 part acid to 20 parts water. Walls should be wet thoroughly before application and washed thoroughly with water after application. High water pressure is not recommended. Note - Always trial solution in a small area which is not highly visible.

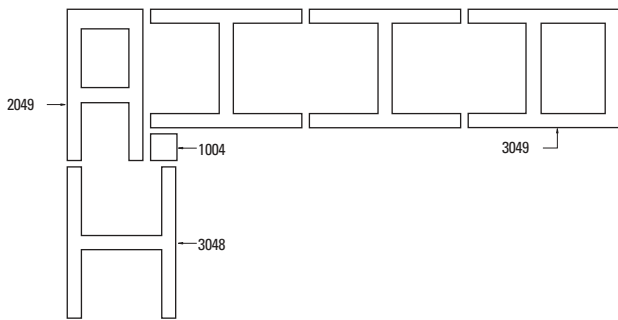
300MM CLEAN OUT COURSE



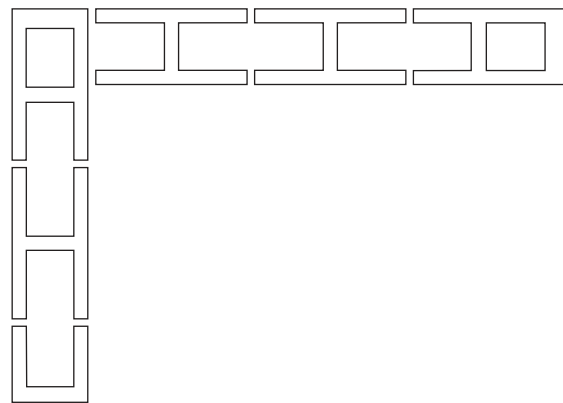
ALTERNATE COURSE



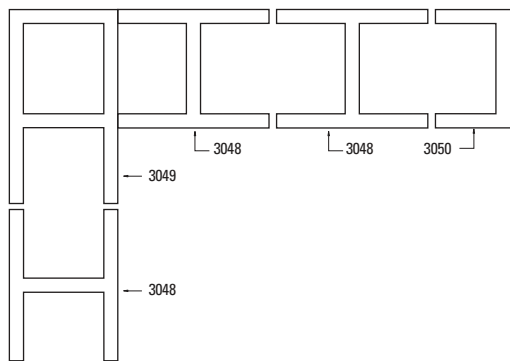
ALTERNATE COURSE



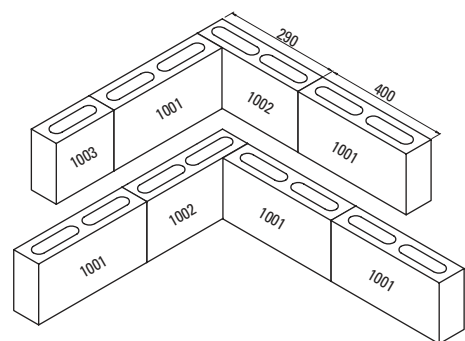
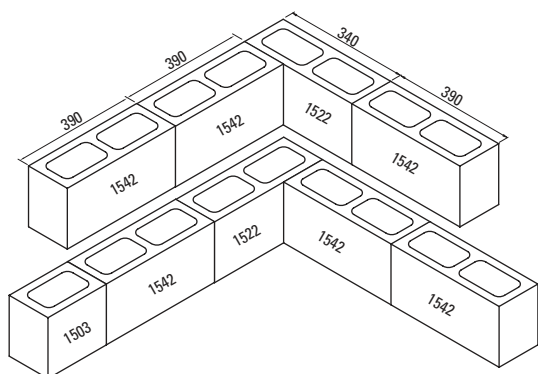
ALTERNATE COURSE



ALTERNATE COURSE



Block Type	Cubic Metres per sq. Metre of Wall	Block Filled per Cubic Metre of Grout
1542	0.054	220
2042	0.083	150
2048	0.10	125
3048	0.18	69
V150	0.069	180
V190	-	-
V290	-	-





BRICKS



BESSER® BLOCKS



PAVERS



RETAINING WALLS

Contact Us



adbrimasonry.com.au



1300 365 565



enquiries@adbri.com.au

Free pallet collection service freecall 1800 674 961 or drop pallets back to place of purchase or lodge your pallet pick up online at adbrimasonry.com.au

Pallets remain Adbri Masonry property. Please telephone us for collection of pallets and keep pallets empty and stacked in a safe and accessible area for collection.

Brick and Block Guide

VIC - October 2017

ABM 5042

Adbri Masonry Pty Ltd

ABN: 31 009 687 521

adbrimasonry.com.au

Versaloc® and the Adbri Masonry logo are trade marks of Adbri Masonry Pty Ltd.

Follow us on Social Media



[AdbriMasonryAus](https://www.facebook.com/AdbriMasonryAus)



[adbrimasonry](https://www.instagram.com/adbrimasonry)



[adbrimasonry](https://www.pinterest.com/adbrimasonry)



[AdbriMasonryAus](https://www.youtube.com/AdbriMasonryAus)

adbriMASONRY
working together