

2025 annual report to the Community

# Gawler and District College B-12

Gawler and District College B-12 number: 0774

Partnership: Greater Gawler



School principal:

Craig Brown

Date of endorsement:

18/03/2026



Government  
of South Australia  
Department for Education

# Context Statement

Gawler and District College B-12 caters for students from R-12. At the time of this report, the enrolment in 2026 is 1016. Gawler and District College B-12 is classified as Category 3 on the Department for Education Index of Educational Disadvantage. At the time of this report, the school population includes 15.5% Aboriginal students, 29.5% students with disabilities, 15% students with English as an additional language or dialect (EALD) funded background, 4% children/young people in care. Further information about the school is available on the school's website (including its context statement), as well as the My School website.

Data Source EMS reports run 1<sup>st</sup> Aug 2025.

## Governing Council Report

The Gawler and District College B-12 Governing Council continued to meet regularly throughout 2025 and maintained strong representation from the broader Gawler community. We were privileged to have Local Member Tony Piccolo then later in the year James Agness as well as Local Gawler Council representative Helen Hennessey as part of our council, alongside dedicated parents who bring a diversity of skills and cultural perspectives. This representation has enabled rigorous and robust discussions throughout the year, ensuring governance decisions are well informed and aligned with the best interests of our students.

We also welcomed Student Voice Leaders to our meetings via video messages, providing valuable insights into student perspectives across all year levels of the College. The Council's focus throughout the year included contributing to policy development and the overarching governance of the site, ensuring positive and successful outcomes for our students, with a strong emphasis on wellbeing and learning achievement.

The Governing Council was actively involved in several key sub-committees across the college, including the Fundraising Committee, Finance Advisory Committee, Gawler and District College Foundation, and OSHC. Each of these committees had a Governing Council member representative ensuring alignment with our overall strategic direction.

The year also saw the ratification of Pupil Free Days, allowing staff to engage in targeted professional development and training aligned with the Strategy for Public Education. Council members received regular updates on the college's progress in key areas such as reading, attendance, learning outcomes and the Strategy for Public Education, ensuring a clear understanding of how the school is enacting these priorities.

OSHC, provided by Happy Haven, continued to expand, offering an invaluable service to our school community. The program has experienced steady growth in numbers during both term time and over the 2025-26 vacation periods, reflecting the increasing demand for quality out-of-school-hours care.

Fundraising initiatives strengthened community engagement and directly supported priority student learning environments. Events such as the Father's and Mother's Day stalls, Junior School Discos, whole-of-college Book Week and Book Swap and the successful Junior School Colour Run contributed significantly to our fundraising efforts. The Fundraising Committee is now working on allocating funds towards student needs, including the development of the second stage of the Nature Play Areas and additional resources to enhance student learning and engagement.

The Gawler and District College Foundation Inc. continued to play a vital role in supporting students through scholarships, generously donated by a wide range of community sponsors. These scholarships provide students from Years 7 to 12 with opportunities to pursue their passions and aspirations, helping them to achieve their goals and further their education.

Throughout the year, the College Captains and student leaders have represented Gawler and District College with pride, both within the school and in the wider community. Their leadership has been evident at school assemblies, community events, and various engagements, where they have admirably upheld the values and reputation of our college.

Principal Craig Brown and the Chair attended three info sessions at the Education Development Centre throughout the year regarding the 'new public education strategy', 'building communities' and 'your schools funding and how it works'. The sessions were very informative.

Thank you to all members for their time and valuable input to Governing Council over this last year. It has been a privilege to support the principal and staff throughout 2025. Their consistent dedication to fostering an inclusive and positive learning environment, ensuring that every student can succeed, has been truly commendable. On behalf of the Governing Council, I extend my sincere gratitude to all members, staff, students and the wider school community for their invaluable contributions. We look forward to continuing our work in 2026 striving for excellence and continuous improvement in all aspects of college life.

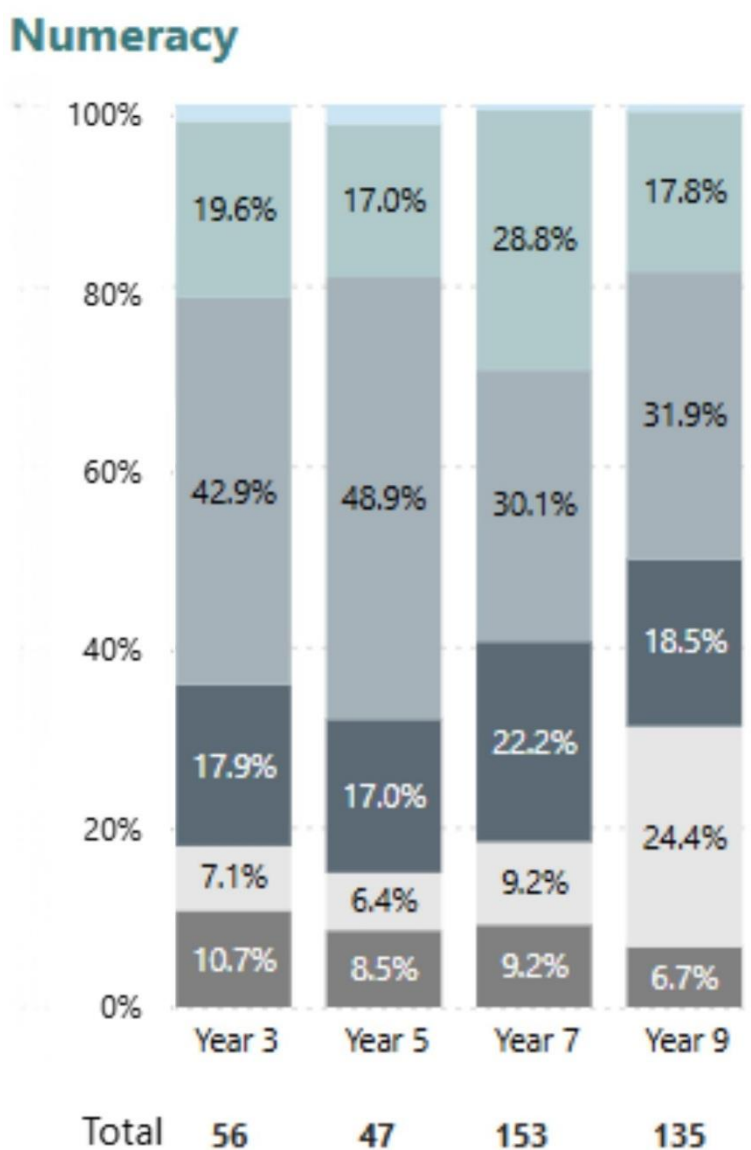
### **Leanne Conway**

Chairperson, Governing Council  
Gawler and District College B-12

# Performance Summary

## NAPLAN Proficiency

In 2023 the Australian Curriculum, Assessment and Reporting Authority (ACARA) - a Commonwealth Independent statutory authority - announced changes to NAPLAN performance reporting. The new approach replaces the previous numerical NAPLAN bands and the national minimum standard.

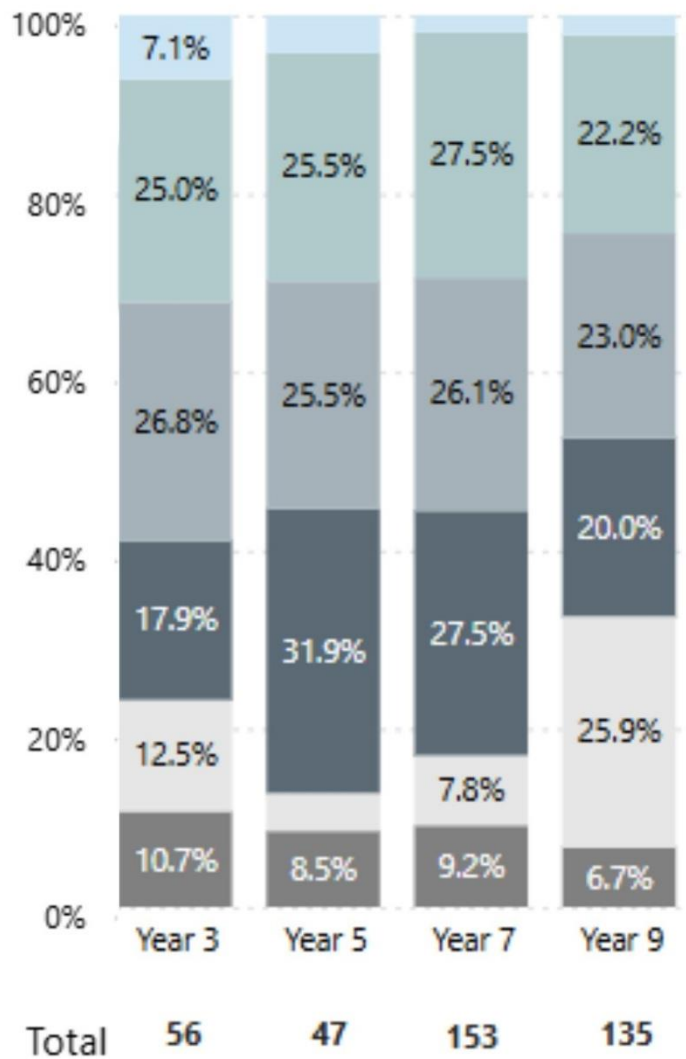


● Exceeding ● Strong ● Developing ● Needs Additional Support ● Absent/Withdrawn ● Exempt

Year Level	03	05	07	09
Exceeding	1	1	1	1
Strong	11	8	44	24
Developing	24	23	46	43
Needs Additional Support	10	8	34	25
Absent/Withdrawn	4	3	14	33
Exempt	6	4	14	9
Total	56	47	153	135

Data Source: Education Dashboard, 2025. If there are less than 6 students who sat NAPLAN in a school, no information will be shown. If a year level has less than 6 students, that year level will not be shown in NAPLAN results.

## Reading

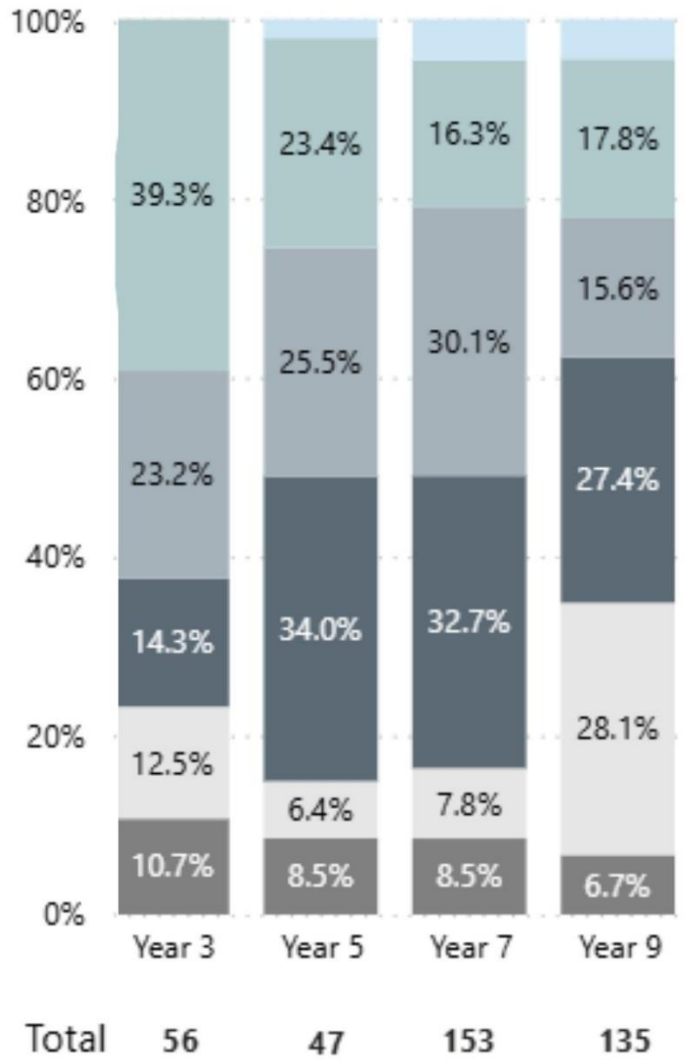


● Exceeding ● Strong ● Developing ● Needs Additional Support ● Absent/Withdrawn ● Exempt

Year Level	03	05	07	09
Exceeding	4	2	3	3
Strong	14	12	42	30
Developing	15	12	40	31
Needs Additional Support	10	15	42	27
Absent/Withdrawn	7	2	12	35
Exempt	6	4	14	
Total	56	47	153	135

Data Source: Education Dashboard, 2025. If there are less than 6 students who sat NAPLAN in a school, no information will be shown. If a year level has less than 6 students, that year level will not be shown in NAPLAN results.

## Writing

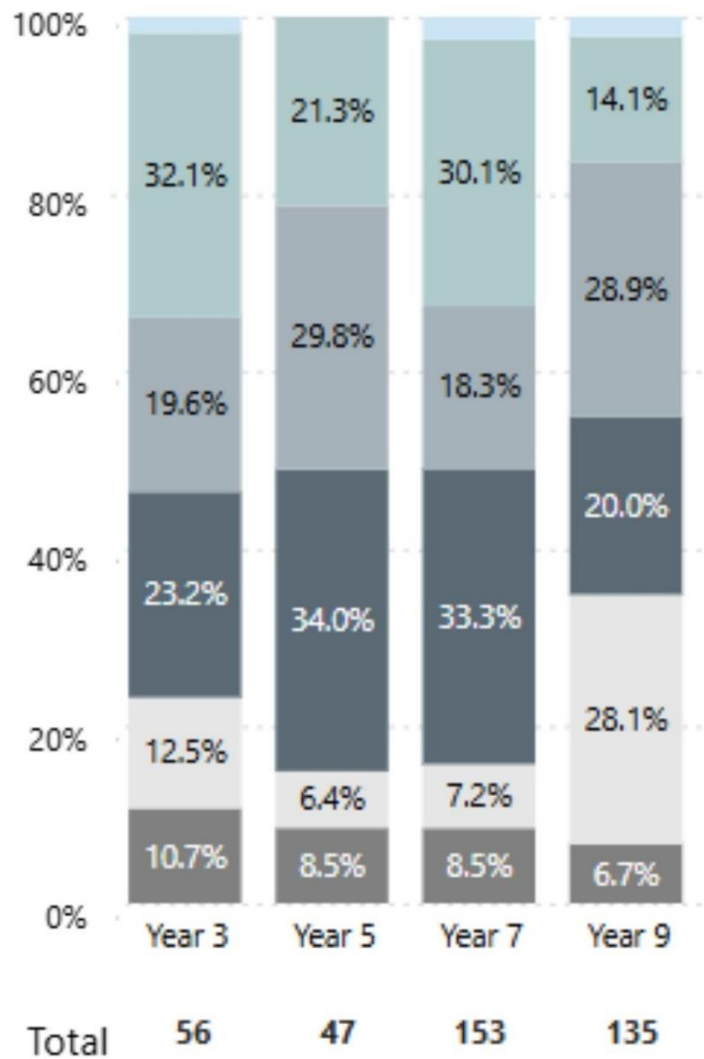


● Exceeding ● Strong ● Developing ● Needs Additional Support ● Absent/Withdrawn ● Exempt

Year Level	03	05	07	09
Exceeding	0	1	7	6
Strong	22	11	25	24
Developing	13	12	46	21
Needs Additional Support	8	16	50	37
Absent/Withdrawn	7	3	12	38
Exempt	6	4	13	9
Total	56	47	153	135

Data Source: Education Dashboard, 2025. If there are less than 6 students who sat NAPLAN in a school, no information will be shown. If a year level has less than 6 students, that year level will not be shown in NAPLAN results.

## Grammar

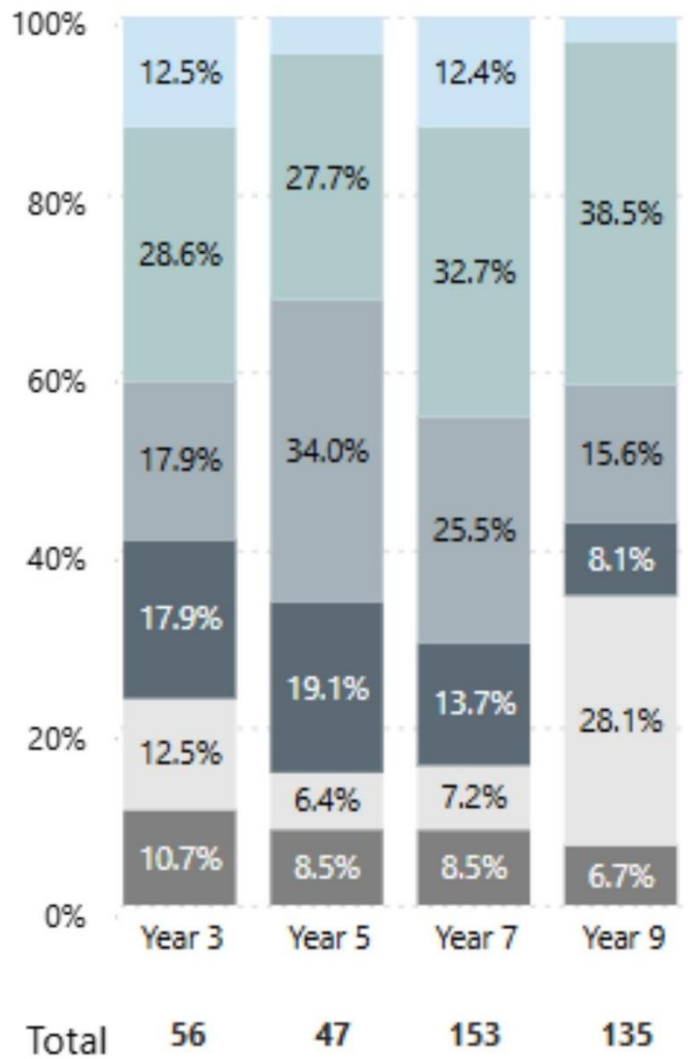


● Exceeding ● Strong ● Developing ● Needs Additional Support ● Absent/Withdrawn ● Exempt

Year Level	03	05	07	09
Exceeding	1	0	4	3
Strong	18	10	46	19
Developing	11	14	28	39
Needs Additional Support	13	16	51	27
Absent/Withdrawn	7	3	11	38
Exempt	6	4	13	9
<b>Total</b>	<b>56</b>	<b>47</b>	<b>153</b>	<b>135</b>

Data Source: Education Dashboard, 2025. If there are less than 6 students who sat NAPLAN in a school, no information will be shown. If a year level has less than 6 students, that year level will not be shown in NAPLAN results.

## Spelling



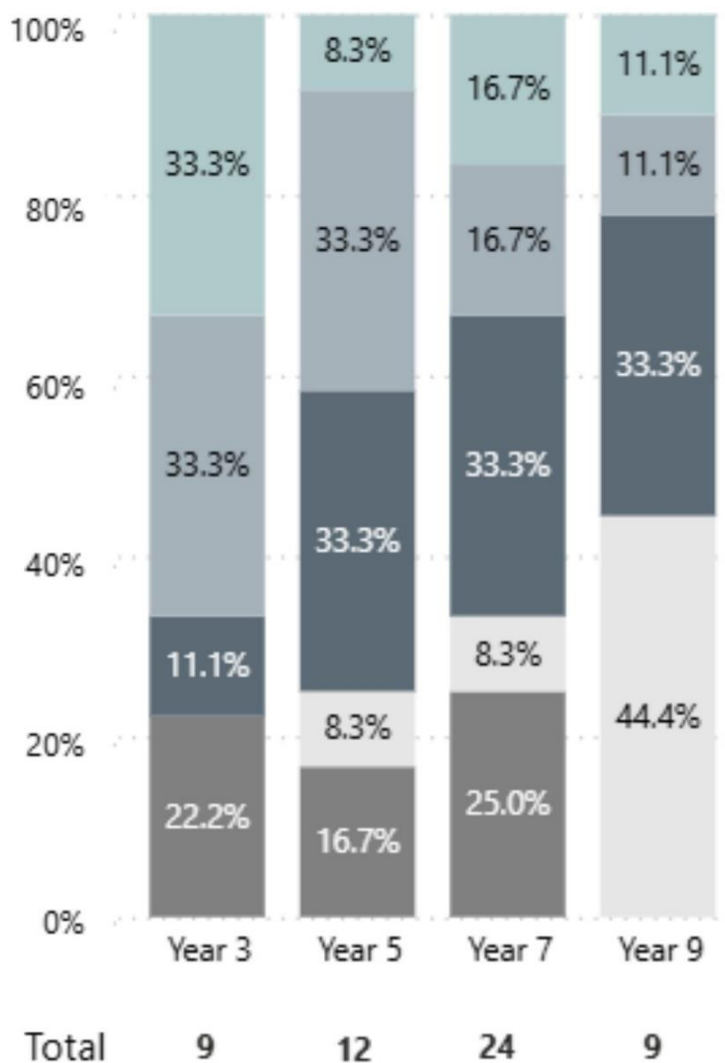
● Exceeding ● Strong ● Developing ● Needs Additional Support ● Absent/Withdrawn ● Exempt

Year Level	03	05	07	09
Exceeding	7	2	19	4
Strong	16	13	50	52
Developing	10	16	39	21
Needs Additional Support	10	9	21	11
Absent/Withdrawn	7	3	11	38
Exempt	6	4	13	9
<b>Total</b>	<b>56</b>	<b>47</b>	<b>153</b>	<b>135</b>

Data Source: Education Dashboard, 2025. If there are less than 6 students who sat NAPLAN in a school, no information will be shown. If a year level has less than 6 students, that year level will not be shown in NAPLAN results.

# NAPLAN Proficiency - Aboriginal Learners

## Numeracy

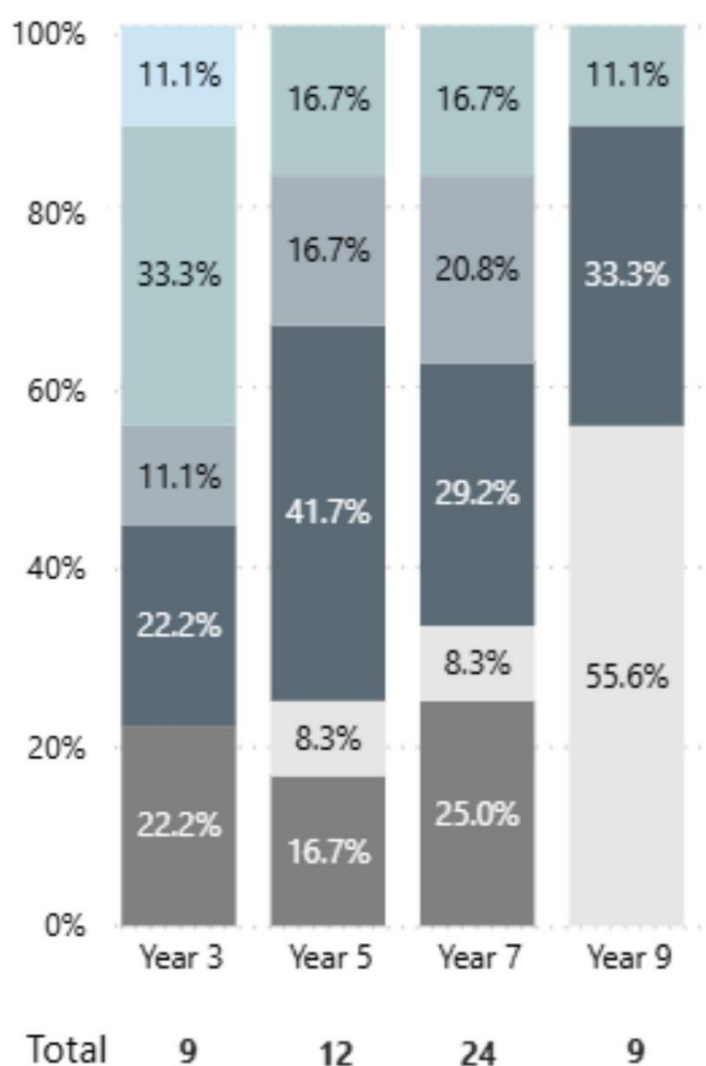


● Exceeding ● Strong ● Developing ● Needs Additional Support ● Absent/Withdrawn ● Exempt

Year Level	03	05	07	09
Strong	3	1	4	1
Developing	3	4	4	1
Needs Additional Support	1	4	8	3
Absent/Withdrawn	0	1	2	4
Exempt	2	2	6	0
Total	9	12	24	9

Data Source: Education Dashboard, 2025. If there are less than 6 students who sat NAPLAN in a school, no information will be shown. If a year level has less than 6 students, that year level will not be shown in NAPLAN results.

## Reading

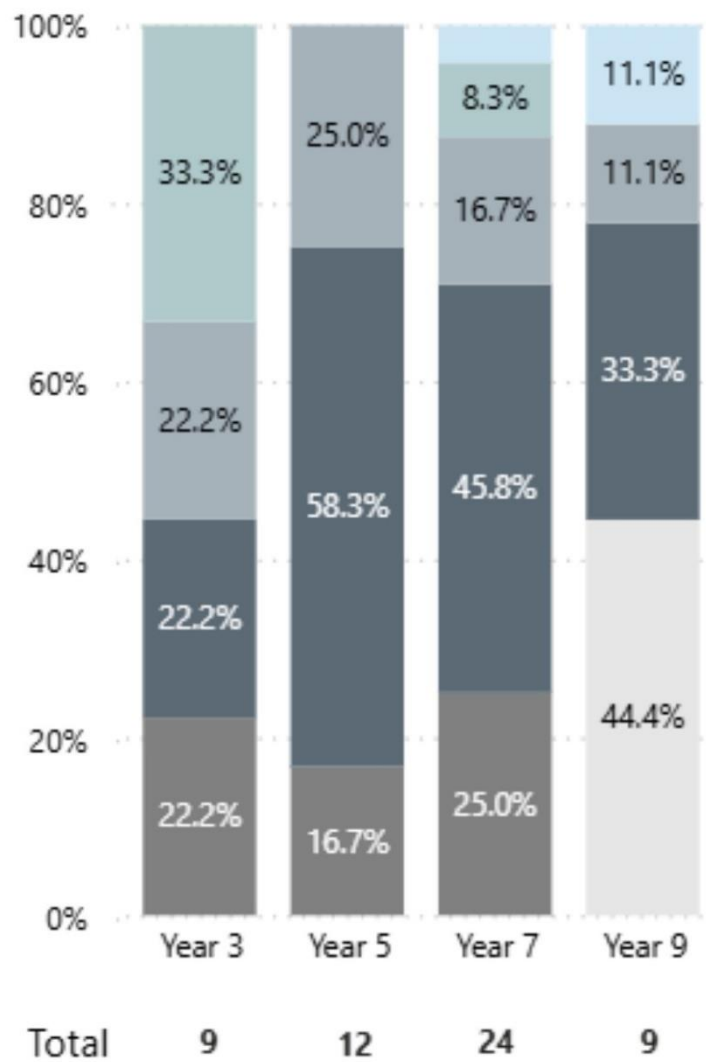


● Exceeding ● Strong ● Developing ● Needs Additional Support ● Absent/Withdrawn ● Exempt

Year Level	03	05	07	09
Exceeding	1	0	0	0
Strong	3	2	4	1
Developing	1	2	5	0
Needs Additional Support	2	5	7	3
Absent/Withdrawn	0	1	2	5
Exempt	2	2	6	
Total	9	12	24	9

Data Source: Education Dashboard, 2025. If there are less than 6 students who sat NAPLAN in a school, no information will be shown. If a year level has less than 6 students, that year level will not be shown in NAPLAN results.

## Writing

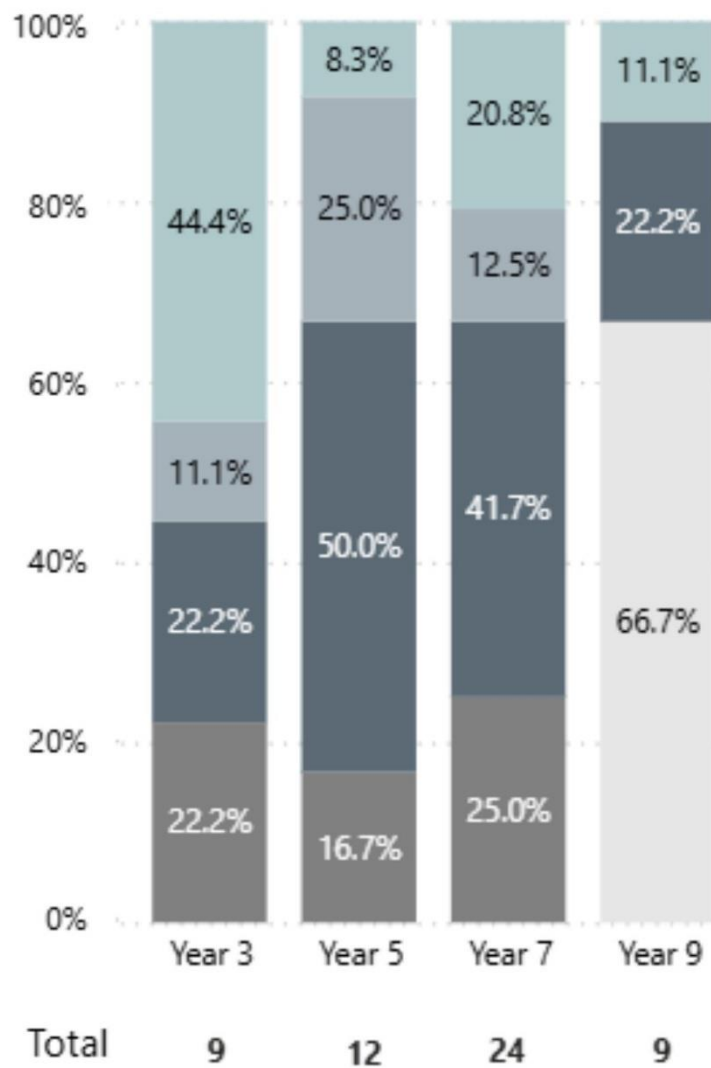


● Exceeding ● Strong ● Developing ● Needs Additional Support ● Absent/Withdrawn ● Exempt

Year Level	03	05	07	09
Strong	0	0	1	1
Developing	3	0	2	0
Needs Additional Support	2	3	4	1
Absent/Withdrawn	2	7	11	3
Exempt	0	0	0	4
Total	9	12	24	9

Data Source: Education Dashboard, 2025. If there are less than 6 students who sat NAPLAN in a school, no information will be shown. If a year level has less than 6 students, that year level will not be shown in NAPLAN results.

## Grammar



● Exceeding ● Strong ● Developing ● Needs Additional Support ● Absent/Withdrawn ● Exempt

Year Level	03	05	07	09
Exceeding	0	0	0	0
Strong	4	1	5	1
Developing	1	3	3	0
Needs Additional Support	2	6	10	2
Absent/Withdrawn	0	0	0	6
Exempt	2	2	6	
Total	9	12	24	9

Data Source: Education Dashboard, 2025. If there are less than 6 students who sat NAPLAN in a school, no information will be shown. If a year level has less than 6 students, that year level will not be shown in NAPLAN results.

## Spelling



● Exceeding ● Strong ● Developing ● Needs Additional Support ● Absent/Withdrawn ● Exempt

Year Level	03	05	07	09
Exceeding	2	0	2	0
Strong	3	1	7	3
Developing	0	6	6	0
Needs Additional Support	2	3	3	0
Absent/Withdrawn	0	0	0	6
Exempt	2	2	6	0
Total	9	12	24	9

Data Source: Education Dashboard, 2025. If there are less than 6 students who sat NAPLAN in a school, no information will be shown. If a year level has less than 6 students, that year level will not be shown in NAPLAN results.

# South Australian Certificate of Education - SACE

## SACE Stage 2 Grades - Percentage of grades that are C- or above for attempted SACE subjects (SEA)

2021	2022	2023	2024	2025
98%	99%	96%	99%	99%

Data Source: SACE School Data Reports, as of February 2024 for 2021-2023. 2024 SACE results are School supplied data. When there are less than six students, no data is supplied. Due to rounding of percentages, total results may not add up to 100%.

## SACE Stage 2 Grade Distribution

Grade	2021	2022	2023	2024	2025
A+	0%	0%	0%	0.2%	0.68
A	4%	2%	2%	3%	4.07
A-	5%	8%	5%	7%	8.14
B+	7%	13%	7%	11%	9.73
B	16%	20%	17%	14%	12.44
B-	17%	16%	15%	15%	13.80
C+	17%	22%	18%	18%	21.27
C	26%	14%	25%	21%	22.17
C-	6%	4%	7%	10%	6.79
D+	2%	1%	3%	.4%	0.45
D	0%	0%	1%	.2%	0.23
D-		0%	0%	0%	0.23
E+	0%			0%	0
E-			0%	0%	0

Data Source: SACE School Data Reports, as of February 2024 for 2021-2023. 2024-2025 SACE results are School supplied data. When there are less than six students, no data is supplied. Due to rounding of percentages, total results may not add up to 100%.

## SACE Completion – Percentage of completers out of those students who had the potential to complete their SACE in October that year

2021	2022	2023	2024	2025
99%	100%	99%	98%	99%

Data Source: SACE School Data Reports, as of February 2024 for 2021-2023. 2024- 2025 SACE results are School supplied data. When there are less than six students, no data is supplied. Due to rounding of percentages, total results may not add up to 100%.

## Year 12 Students undertaking Vocational or Trade Training (VET)

	2022	2023	2024	2025
Percentage of Year 12 students undertaking Vocational Training or Trade Training	59%	50%	33%	49%
Percentage of Year 12 students attaining a Year 12 certificate or equivalent VET qualification	100%	99%	98%	99%

Data Source: School supplied data

## School Attendance

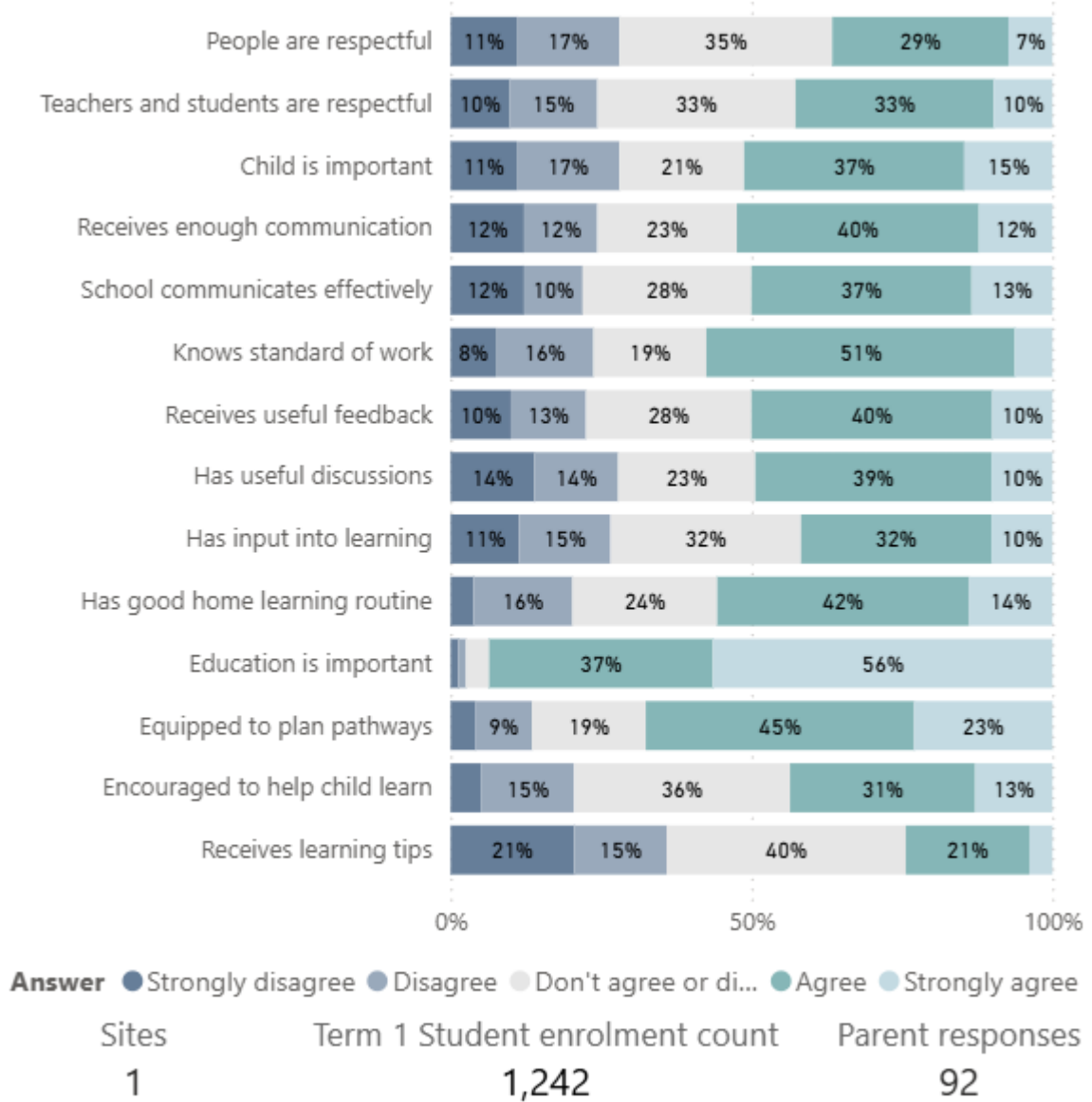
Year Level	2022	2023	2024	2025
Reception	80.5%	84.1%	89.7%	88%
Year 01	86.9%	86.5%	82.9%	83%
Year 02	82.8%	90.4%	87.1%	89.2%
Year 03	89.4%	85.8%	89.9%	83.8%
Year 04	86.1%	87.8%	87.8%	87.9%
Year 05	82.7%	85.3%	89.0%	87.8%
Year 06	83.1%	83.4%	86.1%	84.6%
Year 07	79.6%	84.7%	84.3%	82.5%
Year 08	77.5%	78.3%	80.7%	80.3%
Year 09	77.8%	79.9%	77.9%	78.8%
Year 10	78.3%	80.0%	78.7%	76.9%
Year 11	79.4%	80.1%	79.8%	78.5%
Year 12	79.7%	76.6%	77.5%	81.4%
Primary Other	79.1%	85.9%	88.0%	N/A
Secondary Other	87.7%	83.4%	83.4%	91.6%
Total	80.3%	81.5%	82.0%	81.6%

Data Source: Department for Education Attendance Data, Semester 1 Report 2024. A blank cell indicates there were no students enrolled. 'Primary Other' includes students enrolled in specialised education options. 'Secondary Other' includes students who have already spent a year at Year 12 and elected to undertake further study at Year 12.

## Attendance Comment

In South Australia, all children and young people must be in school from 6 years to 16 years old. They must attend a government or non-government school full time. From age 16 to 17 however, young people must attend school or an approved learning program (such as an apprenticeship, traineeship, accredited course or university). Schools and parents must encourage and support students to come to school every day. Parents and caregivers must make sure their child is enrolled in a school, and attends school all day and everyday it is open, unless a child is sick or has an approved exemption. Teachers and leaders actively follow up when a student misses school, including recording all absences and non-attendance. All schools in South Australia have local attendance procedures governed under the Education and Children's Services Regulations 2020.

# School Parent Opinion Survey Results



Data Source: 2025 Department for Education Parent Opinions Survey, Term 3 2025.

# Highest Qualifications held by the teaching workforce and workforce composition

All teachers at this school are qualified and registered with the SA Teachers Registration Board.

Qualification Level	Number of Qualifications
Bachelor's degrees or Diplomas	50
Postgraduate Qualifications	43

Data Source: Data extracted from Mandatory Workforce Information Collections as on the last pay date of June 2024. As self-reported by staff in the system.

Please note: Data includes staff who are Actively employed and on extended paid leave. Please note only the highest qualification of the Teaching staff is reported. Excludes any number of other certifications earned.

## Workforce composition including indigenous staff

	Teaching Staff		Non-Teaching Staff	
	Indigenous	Non-Indigenous	Indigenous	Non-Indigenous
Full-Time Equivalents	3.0	89.5	4	48.8
Persons	3	107	5	82

Data Source: Data extracted from Mandatory Workforce Information Collection as on the last pay date of June 2024.

Please note: Data includes staff who are actively employed and on extended paid leave. "Indigenous category" is self-reported by staff in the system.

## Financial Statement

Funding Source	Amount
Grants: State	\$20,176,134.11
Grants: Commonwealth	\$1,599,347.77
Parent Contributions	\$534,970.68
Fund Raising	\$35,440.39
Other	\$31,872.96

Data Source: School supplied data.









